

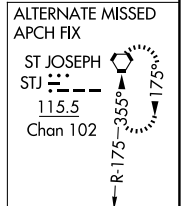
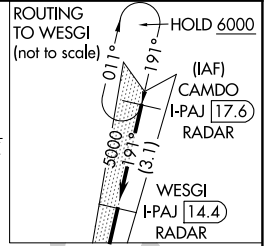
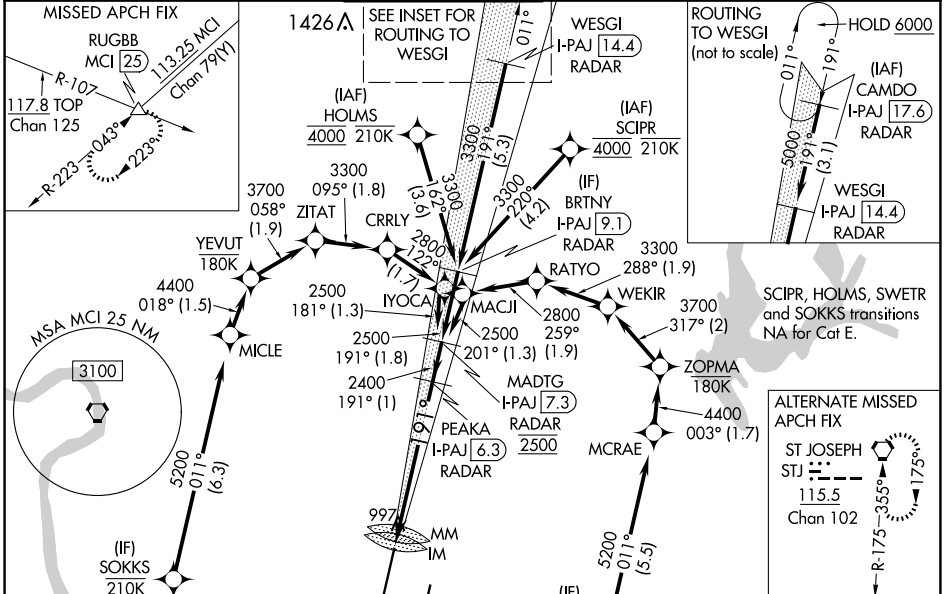
LOC/DME I-PAJ 109.1 Chan 28	APP CRS 191°	Rwy Idg 10801 TDZE 991 Apt Elev 1027
--	------------------------	---

ILS RWY 19R (SA CAT I)

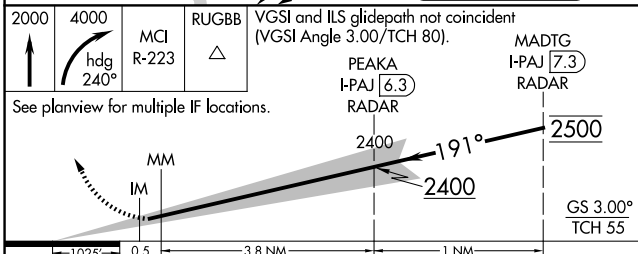
KANSAS CITY INTL (MCI)

RNP APCH - GPS. From SCIPR or HOLMS or SWETR or SOKKS.		ALSF-2 	MISSED APPROACH: Climb to 2000 then climbing right turn to 4000 on heading 240° and MCI VORTAC R-223 to RUGBB INT/MCI 25 DME and hold.
DME or RADAR required. RADAR required for procedure entry at CAMDO.			
<p>Requires specific OPSPEC, MSPEC, or LOA approval. Simultaneous approach authorized except from SCIPR, HOLMS, SOKKS, and SWETR.</p>			

D-ATIS 128.375	KANSAS CITY APP CON 120.95 318.1	INTERNATIONAL TOWER 128.2 254.25	GND CON 121.8	CLNC DEL 135.7	CPDLC
--------------------------	--	--	-------------------------	--------------------------	-------

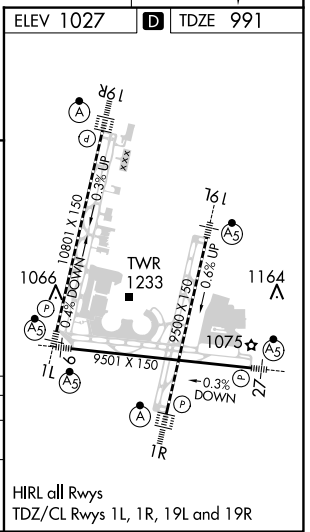


ELEV 1027	TDZE 991
KANSAS CITY 113.25 MCI Chan 79(Y)	
LOCALIZER 109.1 I-PAJ Chan 28	



CATEGORY	A	B	C	D	E
S-ILS 19R	RA 135/14 150 DA 1141				

SA CATEGORY I ILS - SPECIAL AIRCREW & AIRCRAFT CERTIFICATION REQUIRED



HIRL all Rwws
TDZ/CL Rwws 1L, 1R, 19L and 19R

NC-3, 20 FEB 2025 to 20 MAR 2025

NC-3, 20 FEB 2025 to 20 MAR 2025