

LOC/DME I-PVL 110.75 Chan 44 (Y)	APP CRS 011°	Rwy Idg TDZE 9500 1017	Apt Elev 1027
---	------------------------	--	-------------------------

ILS RWY 1R (CAT II & III)

KANSAS CITY INTL (MCI)

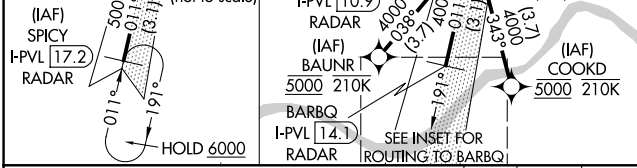
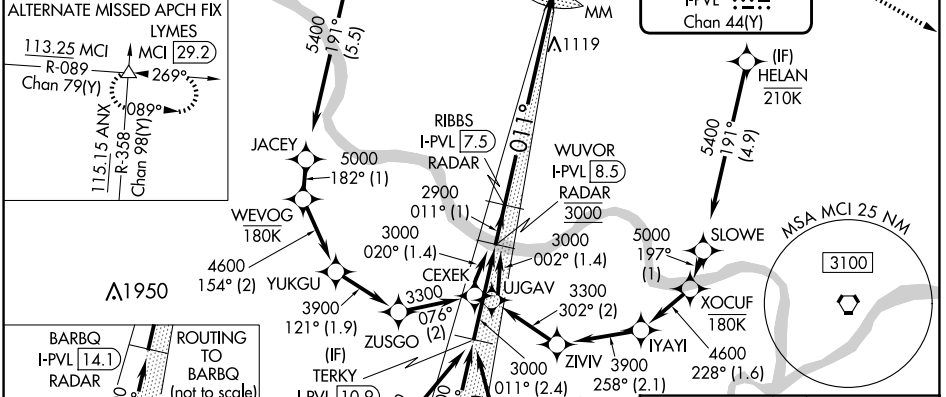
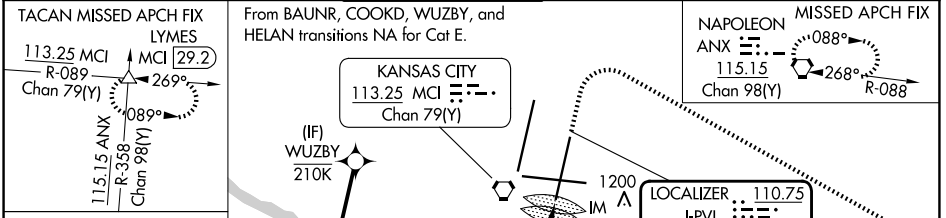
RNP APCH - GPS. From BAUNR or COOKD or WUZBY or HELAN.
 DME or RADAR required. RADAR required for procedure entry at SPICY.

Simultaneous approach authorized except from BAUNR, COOKD, WUZBY, and HELAN. CAT II: RVR 1000 authorized with specific OPSPEC, MSPEC, or LOA approval and use of autoland or HUD to touchdown.

ALSF-2 (A)

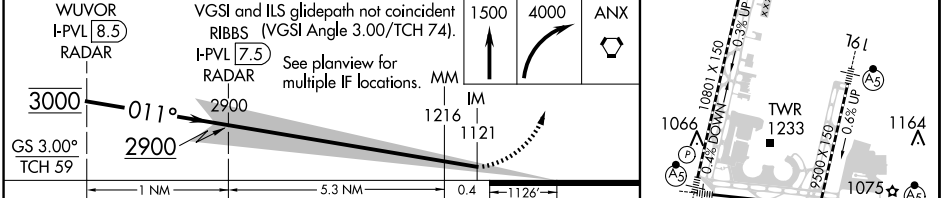
MISSED APPROACH: Climb to 1500 then climbing right turn to 4000 direct ANX VORTAC and hold. (TACAN aircraft)
 Climb to 1500 then climbing right turn to 4000 on heading 130° and MCI R-089 to LYMES INT/MCI 29.2 DME and hold.

D-ATIS 128.375	KANSAS CITY APP CON 120.95 318.1	INTERNATIONAL TOWER 128.2 254.25	GND CON 121.8	CLNC DEL 135.7	CPDLC
--------------------------	--	--	-------------------------	--------------------------	-------



ELEV 1027	TDZE 1017
-----------	-----------

TDZ/CL Rwy 1L, 1R, 19L and 19R
HIRL all Rwy



CATEGORY	A	B	C	D	E
S-ILS 1R	CAT II RA 111/12 100 DA 1117				
S-ILS 1R	CAT III RVR 06				

CATEGORY II & III ILS - SPECIAL AIRCREW & AIRCRAFT CERTIFICATION REQUIRED

NC-3, 20 FEB 2025 to 20 MAR 2025

NC-3, 20 FEB 2025 to 20 MAR 2025