

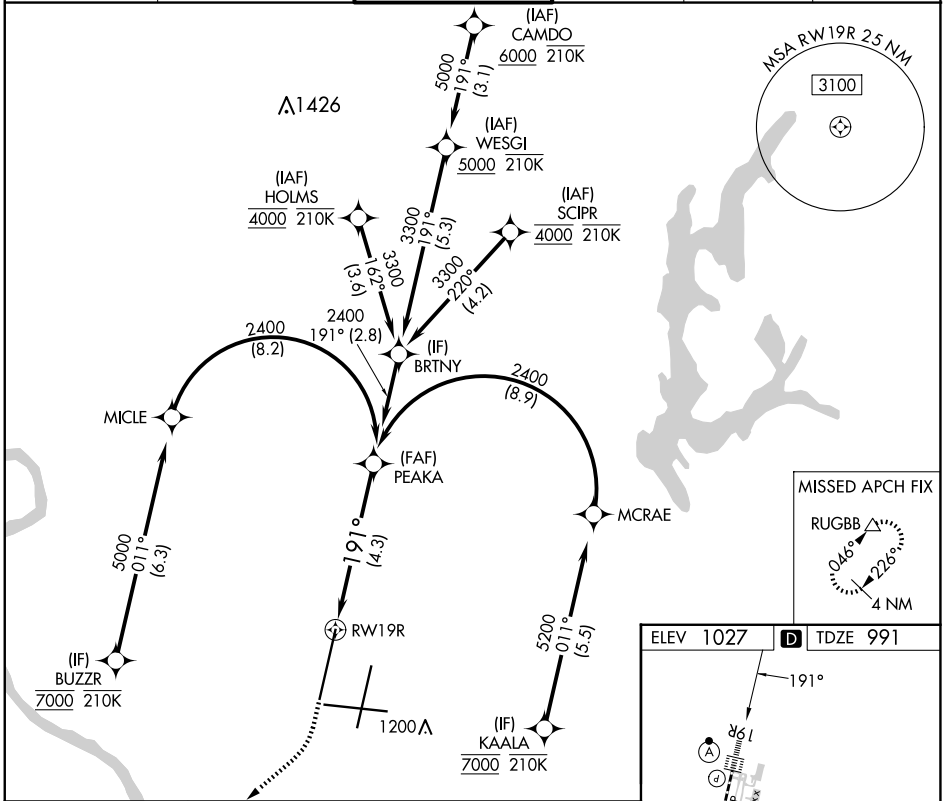
APP CRS	Rwy Idg	<b>10801</b>
<b>191°</b>	TDZE	<b>991</b>
	Apt Elev	<b>1027</b>

# RNAV (RNP) Z RWY 19R

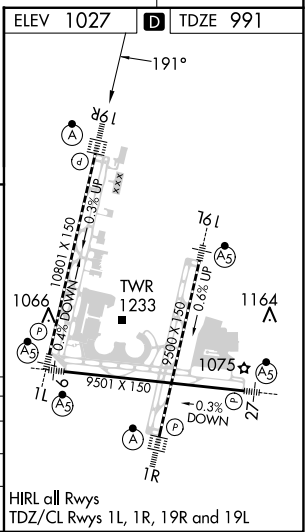
KANSAS CITY INTL (MCI)

RADAR required for procedure entry. RNP AR APCH - GPS.		ALSF-2 	MISSED APPROACH: Climb to 2000 then climbing right turn to 4000 direct RUGBB and hold.
<p>▼ For uncompensated Baro-VNAV systems, procedure NA below -21°C or above 54°C. Simultaneous approach authorized, except for arrivals at BUZZR, HOLMS, SCIPR, and KAALA. For inop ALS, increase RNP 0.15 all Cats visibility to RVR 4500 and RNP 0.30 all Cats visibility RVR 6000.</p>			

D-ATIS <b>128.375</b>	KANSAS CITY APP CON <b>120.95 318.1</b>	INTERNATIONAL TOWER <b>128.2 254.25</b>	GND CON <b>121.8</b>	CLNC DEL <b>135.7</b>	CPDLC
--------------------------	--	--	-------------------------	--------------------------	-------



2000	4000	RUGBB	See planview for multiple IF locations. VGSI and RNAV glidepath not coincident (VGSI Angle 3.00/TCH 80).	PEAKA
				2400
RWY 19R		GP 3.00°		TCH 55
4.3 NM				
CATEGORY	A	B	C	D
RNP 0.15 DA		1287/24	296 (300-1/2)	
RNP 0.30 DA		1405/40	414 (400-3/4)	
<b>AUTHORIZATION REQUIRED</b>				



NC-3, 20 FEB 2025 to 20 MAR 2025

NC-3, 20 FEB 2025 to 20 MAR 2025

HIRL all Rwy's  
TDZ/CL Rwy's 1L, 1R, 19R and 19L