

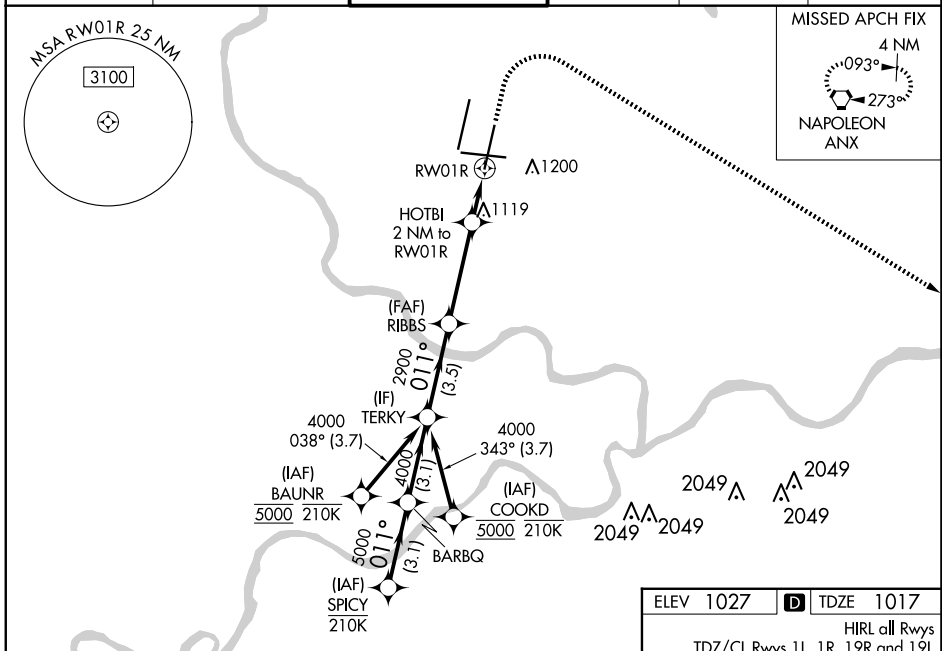
WAAS CH 58208 W01A	APP CRS 011°	Rwy Idg 9500 TDZE 1017 Apt Elev 1027
---------------------------------	------------------------	---

RNAV (GPS) Y RWY 1R

KANSAS CITY INTL (MCI)

RNP APCH - GPS.	ALSF-2	MISSED APPROACH: Climb to 1500 then climbing right turn to 4000 direct ANX VORTAC and hold.
-----------------	--------	---

D-ATIS 128.375	KANSAS CITY APP CON 120.95 318.1	INTERNATIONAL TOWER 128.2 254.25	GND CON 121.8	CLNC DEL 135.7	CPDLC
--------------------------	--	--	-------------------------	--------------------------	-------



NC-3, 20 FEB 2025 to 20 MAR 2025

NC-3, 20 FEB 2025 to 20 MAR 2025

SPICY	VGSI and RNAV glidepath not coincident (VGSI Angle 3.00/TCH 74).	1500	4000	ANX
6000	BARBQ	TERKY	RIBBS	HOTBI 2 NM to RWY 1R
5000	4000	2900	1700	0.9 NM to RWY 1R
GP 3.00°				
TCH 59				
	3.1 NM	3.1 NM	3.5 NM	3.7 NM
CATEGORY	A	B	C	D
LPV DA	1217/18		200 (200-½)	
LNAV/VNAV DA	1311/24		294 (300-½)	
LNAV MDA	1380/24	363 (400-½)	1380/35	363 (400-¾)
CIRCLING	1540-1	513 (600-1)	1540-1½	1580-2
			513 (600-1½)	553 (600-2)

