

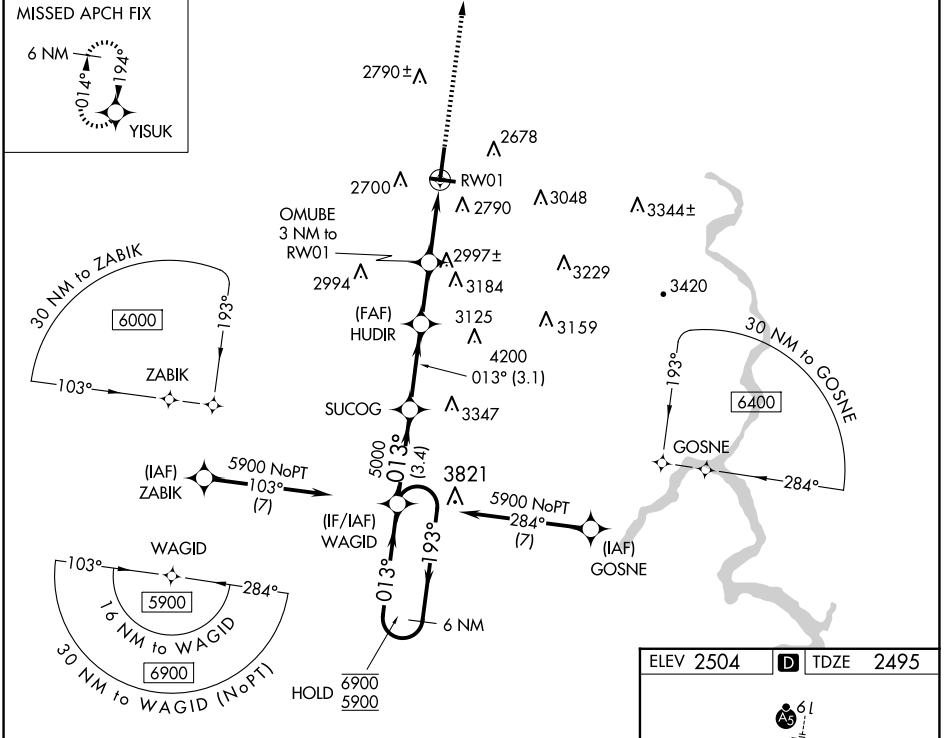
WAAS CH <b>56323</b> <b>W01A</b>	APP CRS <b>013°</b>	Rwy Idg TDZE Apt Elev	<b>6750</b> <b>2495</b> <b>2504</b>
--	------------------------	-----------------------------	---

# RNAV (GPS) RWY 1

RALEIGH COUNTY MEML (BKW)

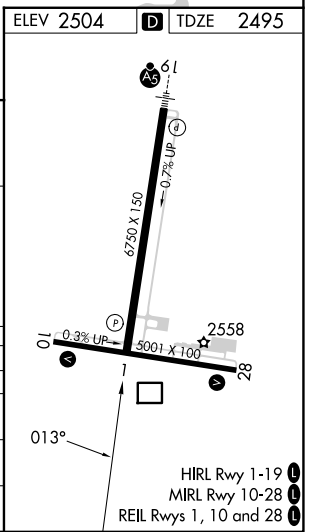
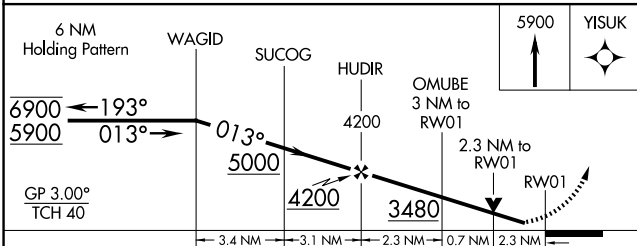
RNP APCH - GPS.		MISSED APPROACH: Climb to 5900 direct YISUK and hold, continue climb-in-hold to 5900.
<p>▼ Rwy 1 helicopter visibility reduction below ¾ SM NA. For uncompensated Baro-VNAV systems, LNAV/VNAV NA below -14°C or above 54°C.</p>		

ASOS <b>121.55</b>	CHARLESTON APP CON <b>125.4 269.125</b>	UNICOM <b>123.0 (CTAF) 0</b>
-----------------------	--	---------------------------------



NE-4, 20 FEB 2025 to 20 MAR 2025

NE-4, 20 FEB 2025 to 20 MAR 2025



CATEGORY	A	B	C	D
LPV DA		2810-7/8	315 (400-7/8)	
LNAV/VNAV DA		3093-13/4	598 (600-13/4)	
LNAV MDA	3260-1 765 (800-1)	3260-1 1/4 765 (800-1 1/4)	3260-2 1/2 765 (800-2 1/2)	765 (800-2 1/2)
CIRCLING	3260-1 756 (800-1)	3260-1 1/4 756 (800-1 1/4)	3320-2 1/2 816 (900-2 1/2)	3500-3 996 (1000-3)