

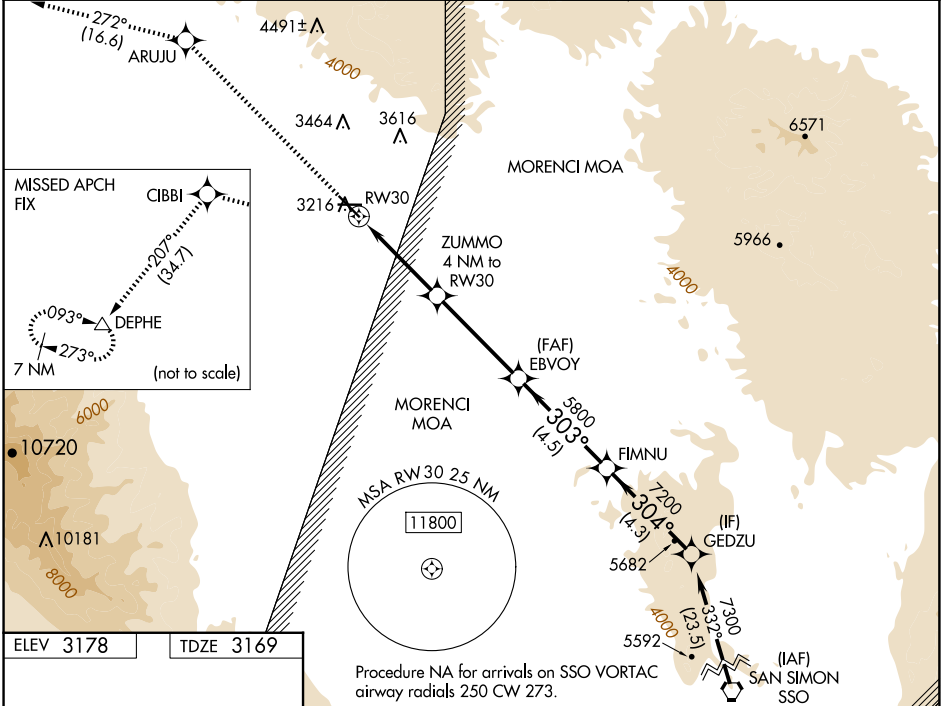
WAAS CH 78316 W30A	APP CRS 303°	Rwy Idg TDZE Apt Elev	6007 3169 3178
--	------------------------	-----------------------------	---

RNAV (GPS) RWY 30

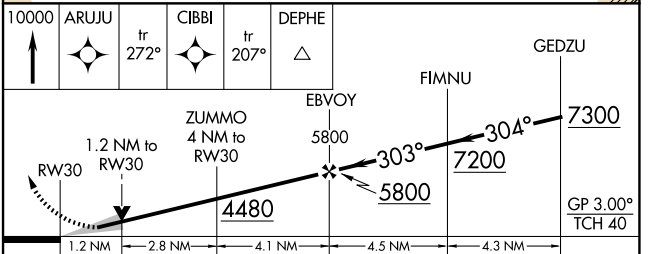
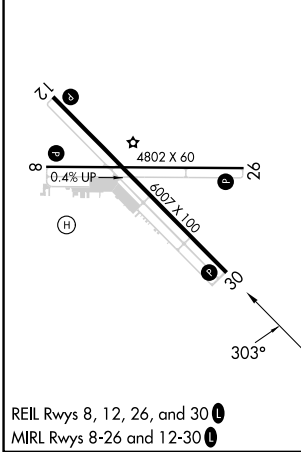
SAFFORD RGNL/1LT DUANE SPALSBURY FLD (SAD)

RNP APCH - GPS.	MISSED APPROACH: Climb to 10000 direct ARUUJ and on track 272° to CIBBI and on track 207° to DEPHE and hold.
<p>▽ Circling to Rwy 8 NA at night. Circling NA northeast of Rwy 12 and north of Rwy 26. For uncompensated Baro-VNAV systems, LNAV/VNAV NA below -6°C or above 54°C.</p> <p>⚠</p>	

ASOS 124.175	ALBUQUERQUE CENTER 134.45 327.15	UNICOM 122.8 (CTAF) 0
------------------------	--	---------------------------------



ELEV 3178	TDZE 3169
-----------	-----------



CATEGORY	A		B		C		D
LPV DA	3419-3/4		250 (300-3/4)				
LNAV/VNAV DA	3517-1		348 (400-1)				
LNAV MDA	3600-1		431 (500-1)		3600-1 1/4		431 (500-1 1/4)
CIRCLING	3600-1 422 (500-1)		3640-1 462 (500-1)		3640-1 1/2 462 (500-1 1/2)		3900-2 1/4 722 (800-2 1/4)

SW-4, 20 FEB 2025 to 20 MAR 2025

SW-4, 20 FEB 2025 to 20 MAR 2025