

(SVC2.SVC) 24025

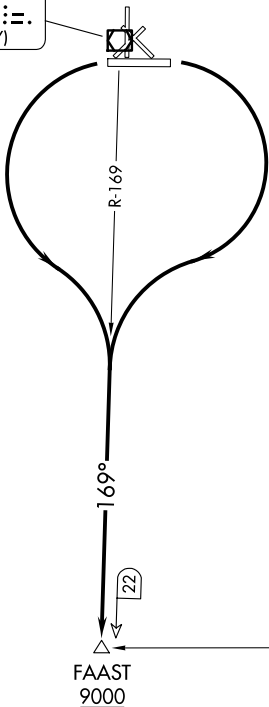
SILVER CITY TWO DEPARTURE (OBSTACLE)

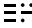
AL-793 (FAA)

GRANT COUNTY (SVC)
SILVER CITY, NEW MEXICO

ALBUQUERQUE CENTER
134.45 327.15
AWOS-3
126.725

SILVER CITY
115.75 SVC 
Chan 104(Y)



DEMING
108.6 DMN 
Chan 23

FAAST
9000

R-258

SW-1, 20 FEB 2025 to 20 MAR 2025

SW-1, 20 FEB 2025 to 20 MAR 2025

TAKEOFF MINIMUMS

Rwys 3, 12, 17, 21, 30, 35: NA-Environmental.

Rwys 8, 26: Standard.

TAKEOFF OBSTACLE NOTES

Rwy 8: Vegetation beginning 225' from DER, 436' left of centerline, 13' AGL/5390' MSL.

Rwy 26: Trees beginning 45' from DER, 452' left of centerline, up to 8' AGL/5390' MSL.

NOTE: Chart not to scale.

DEPARTURE ROUTE DESCRIPTION

TAKEOFF RUNWAY 8: Climbing right turn to intercept the SVC VOR/DME R-169 to FAAST. Cross FAAST at or above 9000 before proceeding on course.

TAKEOFF RUNWAY 26: Climbing left turn to intercept the SVC VOR/DME R-169 to FAAST. Cross FAAST at or above 9000 before proceeding on course.

SILVER CITY TWO DEPARTURE (OBSTACLE)

(SVC2.SVC) 05JAN17

SILVER CITY, NEW MEXICO
GRANT COUNTY (SVC)