

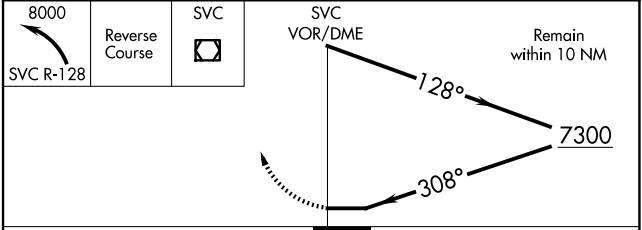
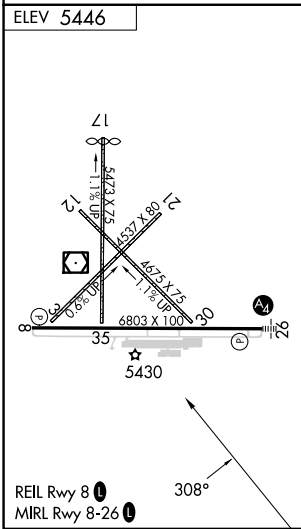
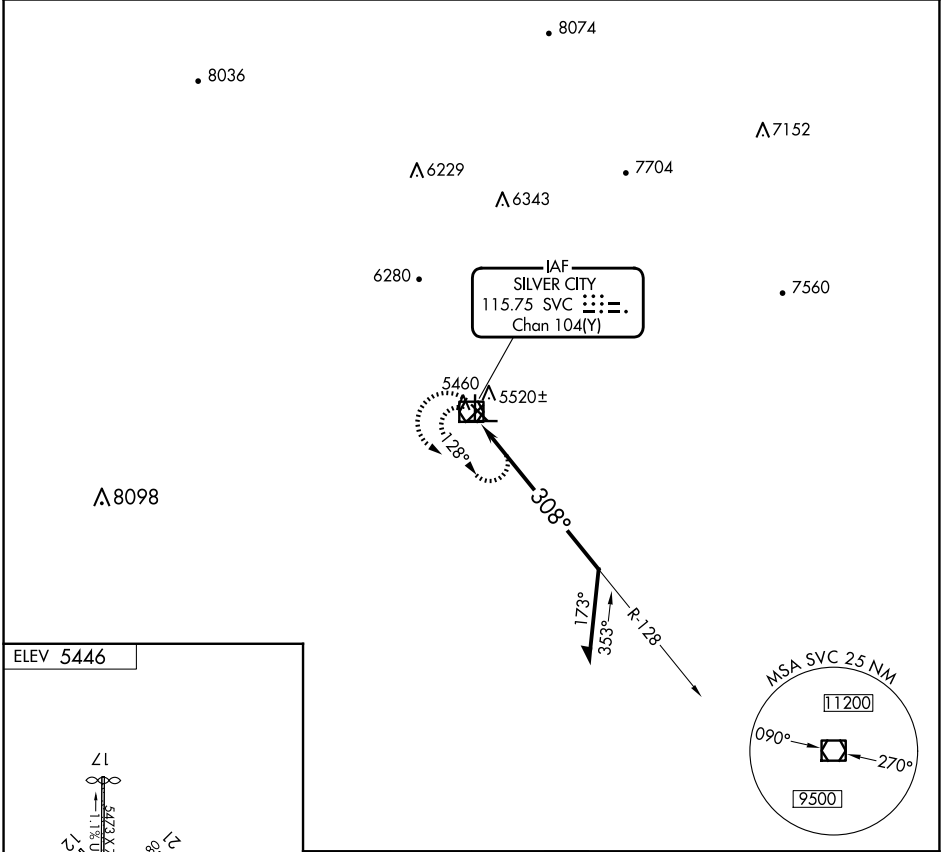
VOR/DME SVC 115.75 Chan 104(Y)	APP CRS 308°	Rwy Idg TDZE Apt Elev 5446	N/A N/A 5446
----------------------------------------------------	------------------------	--------------------------------------------	-----------------------------------------

VOR-A
GRANT COUNTY (SVC)

⚠ When local altimeter setting not received, procedure NA. Circling to Rwy 3, 12, 17, 21, 30, 35 NA at night.

⚠ MISSED APPROACH: Climbing left turn to 8000 via SVC R-128, then reverse course to SVC VOR/DME and hold.

AWOS-3 126.725	ALBUQUERQUE CENTER 134.45 327.15	UNICOM 122.8 (CTAF)
--------------------------	--------------------------------------------	-------------------------------



CATEGORY	A	B	C	D
CIRCLING	5940-1 494 (500-1)	5960-1 514 (600-1)	6100-1¾ 654 (700-1¾)	6740-3 1294 (1300-3)

SW-1, 20 FEB 2025 to 20 MAR 2025

SW-1, 20 FEB 2025 to 20 MAR 2025