

LOC I-VCV 108.75	APP CRS 166°	Rwy Idg TDZE Apt Elev	13052 2830 2885
----------------------------	------------------------	-----------------------------	--

LOC RWY 17

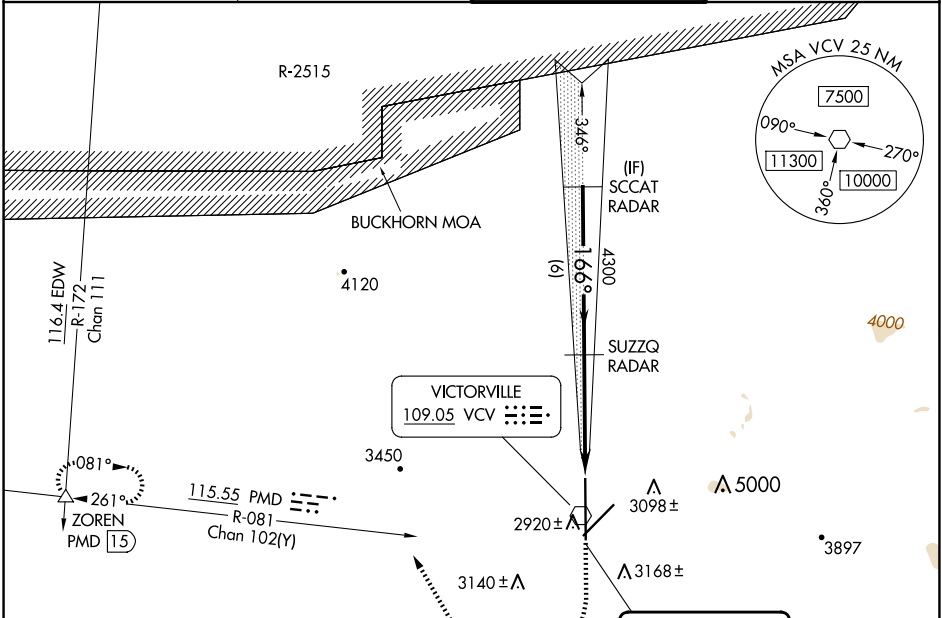
SOUTHERN CALIFORNIA LOGISTICS (VCV)

RADAR required.

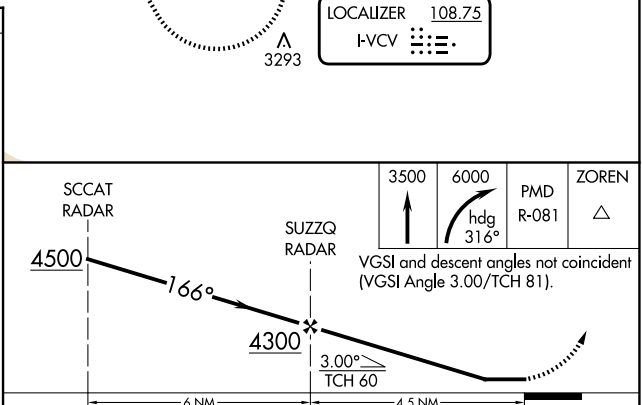
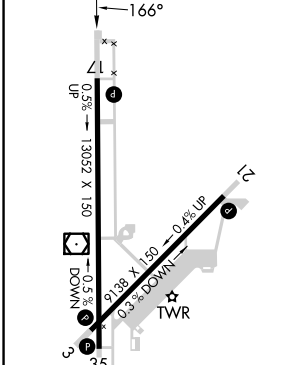
⚠ Circling NA for Cats C and D southeast of Rwy 35 and 21. When local altimeter setting not received use Edwards AFB altimeter setting and increase all MDAs 160 feet, and Circling visibility Cat C 1/2 SM.

MISSED APPROACH: Climb to 3500 then climbing right turn to 6000 on heading 316° and on PMD VORTAC R-081 to ZOREN INT/PMD 15 DME and hold.

ATIS 135.475	JOSHUA APP CON 124.55 363.0	VICTORVILLE TOWER ★ 118.35(CTAF) 282.225	GND CON 124.45
------------------------	---------------------------------------	--	--------------------------



ELEV 2885	D	TDZE 2830
-----------	----------	-----------



	REIL Rwy 17 and 35			
	HIRL Rwy 3-21 and 17-35			
	FAF to MAP 4.5 NM			
Knots	60	90	120	150
Min:Sec	4:30	3:00	2:15	1:48
	150	180	210	240
	3380-1	3420-1	3460-1½	3780-3
	495 (500-1)	535 (600-1)	575 (600-1½)	895 (900-3)

SW-3, 20 FEB 2025 to 20 MAR 2025

SW-3, 20 FEB 2025 to 20 MAR 2025