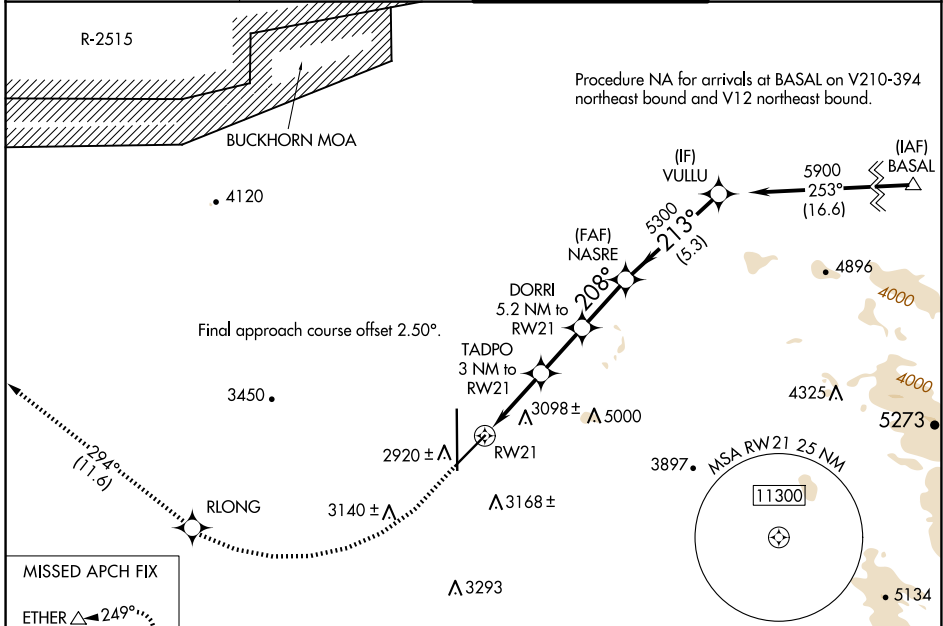


WAAS CH <b>82246</b> <b>W21A</b>	APP CRS <b>208°</b>	Rwy Idg TDZE Apt Elev	<b>9138</b> <b>2858</b> <b>2885</b>
--	------------------------	-----------------------------	---

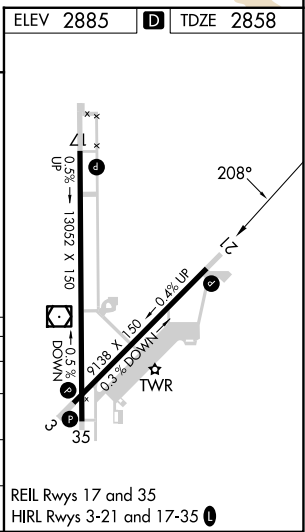
# RNAV (GPS) RWY 21

SOUTHERN CALIFORNIA LOGISTICS (V CV)

RNP APCH - GPS.		MISSED APPROACH: Climb to 3500 then climbing right turn to 6000 direct RLONG and on track 294° to ETHER and hold.	
⚠ Cirdling NA for C and D southeast of Rws 35 and 21. ⚠ For uncompensated Baro-VNAV systems, LNAV/VNAV NA below -20°C or above 54°C.	ATIS <b>135.475</b>	JOSHUA APP CON <b>124.55 363.0</b>	VICTORVILLE TOWER * <b>118.35 (CTAF) 282.225</b>
			GND CON <b>124.45</b>



MISSED APCH FIX		ETHER $\Delta$ 249° 069° 7 NM				
3500	6000	RLONG	tr 294°	ETHER $\Delta$	VGSI and RNAV glidepath not coincident (VGSI Angle 3.00/TCH 85).	VULLU
1.7 NM to RW21		3.0 NM to RW21		5.2 NM to RW21		5.3 NM
3860		4560		5300		5900
GP 3.00°		TCH 60				
CATEGORY	A	B	C	D		
LPV DA	3108-1		250 (300-1)			
LNAV/VNAV DA	3153-1		295 (300-1)			
LNAV MDA	3480-1 622 (600-1)		3480-1¾ 622 (600-1¾)			
CIRCLING	3480-1 595 (600-1)		3480-1¾ 595 (600-1¾)		3760-2¾ 875 (900-2¾)	



SW-3, 20 FEB 2025 to 20 MAR 2025

SW-3, 20 FEB 2025 to 20 MAR 2025