

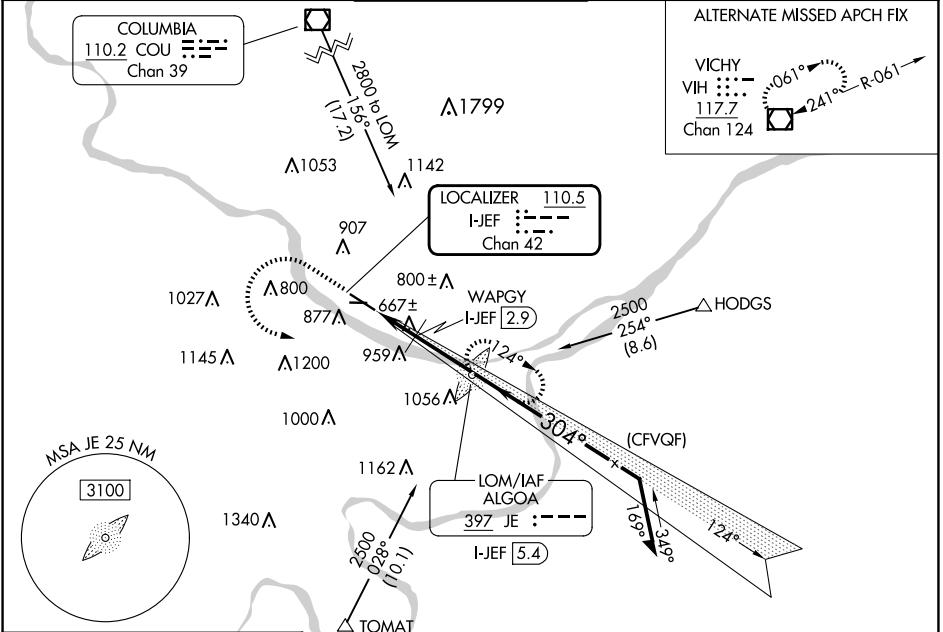
LOC/DME I-JEF 110.5 Chan 42	APP CRS 304°	Rwy Idg TDZE Apt Elev	6000 549 549
---	------------------------	-----------------------------	---

ILS or LOC RWY 30

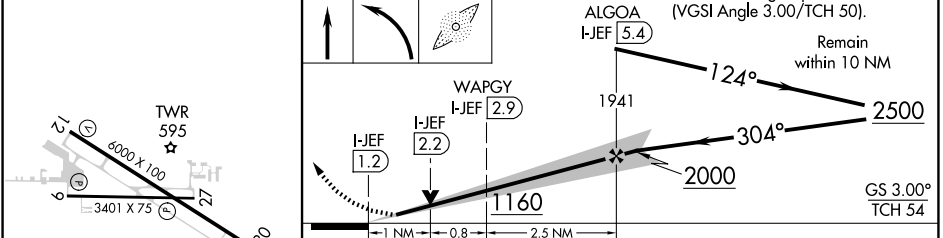
JEFFERSON CITY MEML (JEF)

ADF required.		MALS R	MISSED APPROACH: Climb to 1500 then climbing left turn to 2800 direct ALGOA LOM and hold, continue climb-in-hold to 2800.	
<p>▼ Circling Rwy 9 NA at night. For inop ALS increase S-LOC 30 ▲ Cats C/D visibility to 1 3/4 SM and WAPGY fix minimums: S-LOC 30 Cats C/D visibility to 1 SM.</p>				

ASOS 133.625	MIZZU APP CON 124.375	JEFFERSON CITY TOWER* 125.6 (CTAF) ①	GND CON 121.7	UNICOM 122.95
------------------------	---------------------------------	--	-------------------------	-------------------------



ELEV 549	TDZE 549
----------	----------



CATEGORY	A	B	C	D
S-ILS 30	749-1/2		200 (200-1/2)	
S-LOC 30	1160-1/2	611 (700-1/2)	1160-1 3/8	611 (700-1 3/8)
☑ CIRCLING	1280-1	731 (800-1)	1320-2 1/4 771 (800-2 1/4)	1560-3 1011 (1100-3)
WAPGY FIX MINIMUMS				
S-LOC 30	920-1/2	371 (400-1/2)	920-5/8	371 (400-5/8)
☑ CIRCLING	1280-1	731 (800-1)	1320-2 1/4 771 (800-2 1/4)	1560-3 1011 (1100-3)

HIRL Rwy 12-30 ①
 MIRL Rwy 9-27
 REIL Rwys 9, 12, and 27 ①
 FAF to MAP 4.2 NM
 Knots 60 90 120 150 180
 Min:Sec 4:12 2:48 2:06 1:41 1:24

JEFFERSON CITY, MISSOURI
 Amdt 7 31OCT24
 38°35'N-92°09'W
 JEFFERSON CITY MEML (JEF)
 ILS or LOC RWY 30

NC-3, 20 FEB 2025 to 20 MAR 2025

NC-3, 20 FEB 2025 to 20 MAR 2025