

WAAS CH <b>63001</b> <b>W35A</b>	APP CRS <b>355°</b>	Rwy Idg <b>6002</b> TDZE <b>532</b> Apt Elev <b>548</b>
--	------------------------	---

# RNAV (GPS) RWY 35

COX FLD (PRX)

**⚠** DME/DME RNP-0.3 NA. Visibility reduction by helicopters NA. When local altimeter setting not received, use Sulphur Springs altimeter setting and increase LPV DA to 859 feet, LNAV/VNAV DA to 1002 feet and all MDAs 80 feet; increase Circling Cats C/D visibility 1/4 SM. For uncompensated Baro-VNAV systems, LNAV/VNAV NA below -16°C (4°F) or above 47°C (118°F). Baro-VNAV and VDP NA when using Sulphur Springs altimeter setting.

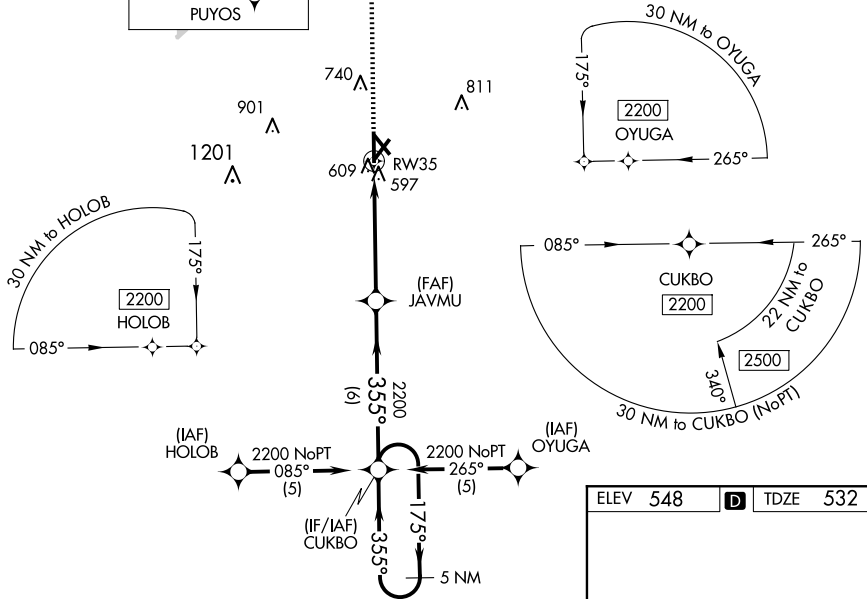
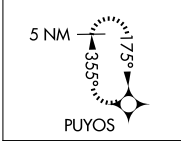
**MISSED APPROACH:** Climb to 2200 direct PUYOS and hold.

AWOS-3PT  
**119.675**

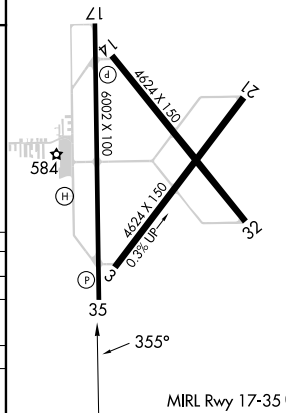
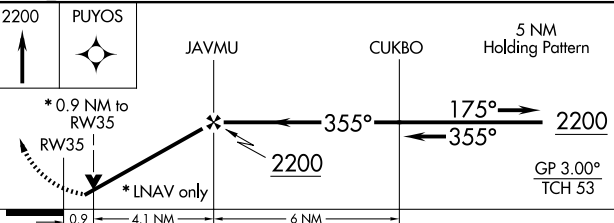
FORT WORTH CENTER  
**124.875**

UNICOM  
**122.975 (CTAF)**

**MISSED APCH FIX**



ELEV 548 **D** TDZE 532



CATEGORY	A	B	C	D
LPV DA		782-3/4	250 (300-3/4)	
LNAV/ VNAV DA		925-1/4	393 (400-1/4)	
LNAV MDA		860-1	328 (400-1)	
CIRCLING	980-1/4 432 (500-1/4)	1060-1/4 512 (600-1/4)	1100-1/2 552 (600-1/2)	1220-2/4 672 (700-2/4)

SC-2, 20 FEB 2025 to 20 MAR 2025

SC-2, 20 FEB 2025 to 20 MAR 2025

MIRL Rwy 17-35 **D**