

LOC I-BAL 109.7	APP CRS 105°	Rwy Idg 9953
		TDZE 143
		Apt Elev 143

BALTIMORE/
WASHINGTON INTL THURGOOD MARSHALL (BWI)

ILS RWY 10 (CAT II & III)

RADAR required for procedure entry.
DME or RADAR required.

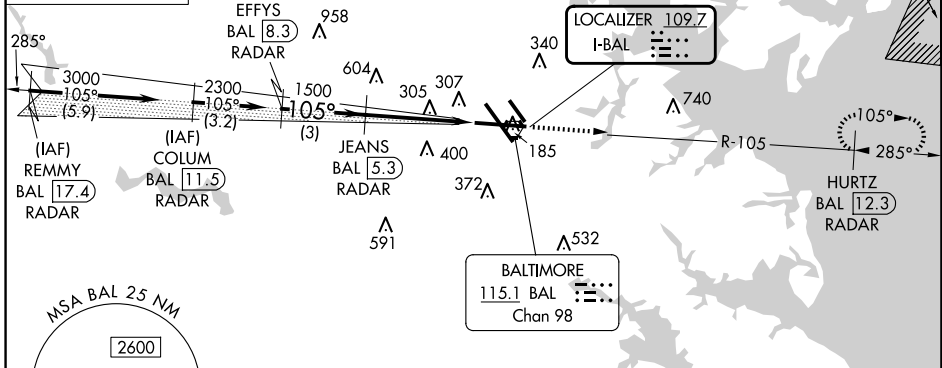


MISSED APPROACH: Climb to 2500 on BAL VORTAC
R-105 to HURTZ/BAL 12.3 DME/RADAR and hold.

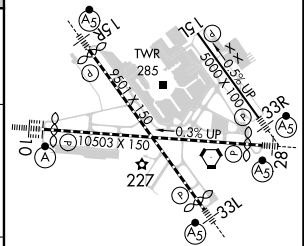
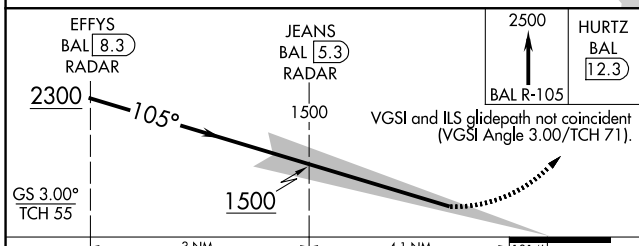
D-ATIS 115.1 127.8	POTOMAC APP CON 119.0 282.275 (020°-100°) 124.55 317.425 (101°-130°)	119.7 290.475 (131°-180°) 128.7 307.9 (181°-019°)	BALTIMORE TOWER	GND CON 121.9	CLNC DEL 118.05
------------------------------	--	--	------------------------	-------------------------	---------------------------

ALTERNATE MISSED
APCH FIX

WESTMINSTER
EMI ---
117.9
Chan 126



ELEV 143	D TDZE 143
----------	-------------------



CATEGORY	A	B	C	D
S-ILS 10	CAT II RA 105/12 100 DA 243			
S-ILS 10	CAT III RVR 06			

CATEGORY II & III ILS - SPECIAL AIRCREW & AIRCRAFT CERTIFICATION REQUIRED

TDZ/CL Rwy 10 and 33L
REIL Rwy 15L and 33R
HIRL all Rwy

NE-3, 20 FEB 2025 to 20 MAR 2025

NE-3, 20 FEB 2025 to 20 MAR 2025