

ILS RWY 33L (SA CAT I & II)

BALTIMORE/WASHINGTON INTL THURGOOD MARSHALL (BWI)

LOC I-RUX 111.7	APP CRS 335°	Rwy ldg TDZE Apt Elev	8301 143 143
---------------------------	------------------------	-----------------------------	---

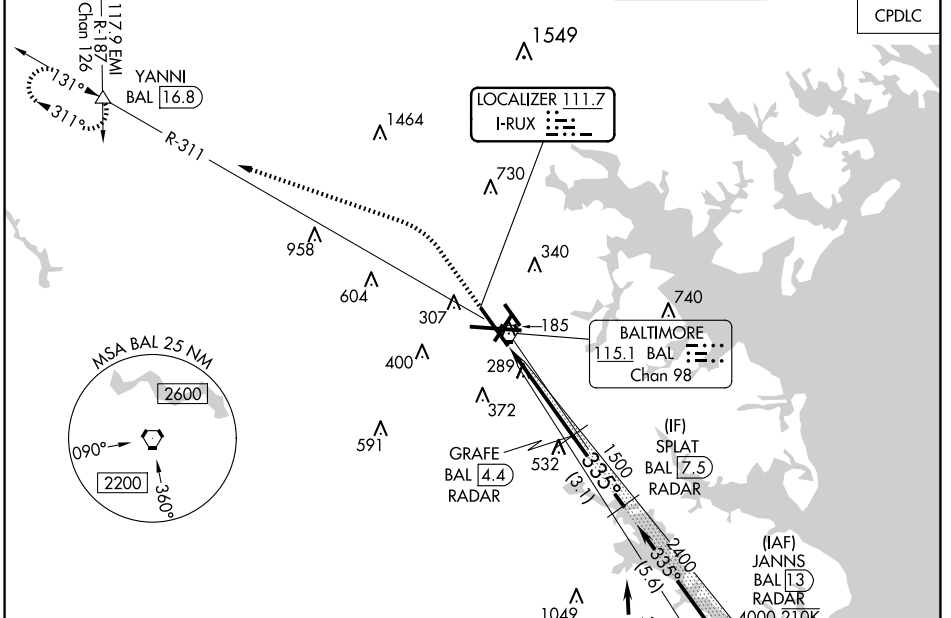
RNP APCH - GPS. From KOOLZ.
 RADAR required for procedure entry. DME or RADAR required.

Simultaneous approach authorized with ILS or LOC Rwy 33R. DME from BAL VORTAC. DME use requires simultaneous reception of I-RUX and BAL DME. SA Cat I & II: Requires specific OPSPEC, MSPEC, or LOA approval.

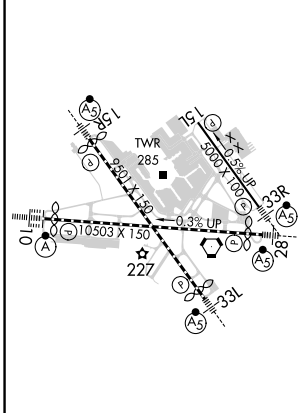


MISSED APPROACH: Climb to 600 then climbing left turn to 2600 on heading 300° and BAL VORTAC R-311 to YANNI INT/ BAL 16.8 DME and hold.

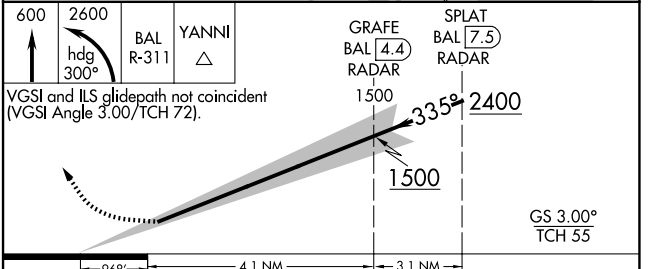
D-ATIS 115.1 127.8	POTOMAC APP CON 119.0 282.275 (020°-100°) 119.7 290.475 (101°-130°)	1131°-180° 181°-019°	BALTIMORE TOWER 119.4 257.8	GND CON 121.9	CLNC DEL 118.05
------------------------------	---	---------------------------------------	---------------------------------------	-------------------------	---------------------------



ELEV 143	D	TDZE 143
-----------------	----------	-----------------



TDZ/CL Rwsy 10 and 33L
 REIL Rwsy 15L and 33R
 HIRL all Rwsy



CATEGORY	A	B	C	
S-ILS 33L	SA CAT I RA 185/14 150 DA 293			
S-ILS 33L	SA CAT II RA 128/12 100 DA 243			

SA CATEGORY I & II ILS - SPECIAL AIRCREW & AIRCRAFT CERTIFICATION REQUIRED

ILS RWY 33L (SA CAT I & II)

NE-3, 20 FEB 2025 to 20 MAR 2025

NE-3, 20 FEB 2025 to 20 MAR 2025