

LOC I-BAL 109.7	APP CRS 105°	Rwy ldg 9953 TDZE 143 Apt Elev 143
---------------------------	------------------------	---

BALTIMORE/ WASHINGTON INTL THURGOOD MARSHALL (BWI) ILS or LOC RWY 10

RADAR required for procedure entry.
DME or RADAR required.

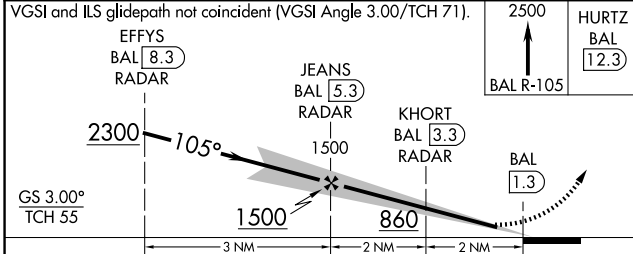
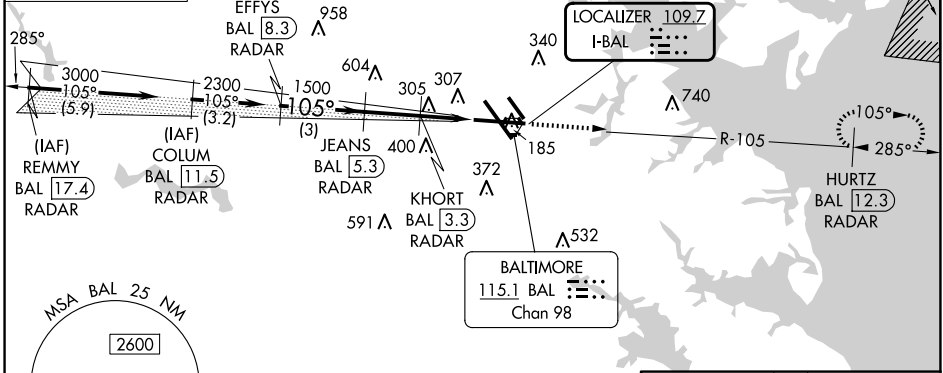
ALSf-2

MISSED APPROACH: Climb to 2500 on BAL VORTAC R-105 to HURTZ/BAL 12.3 DME/RADAR and hold.

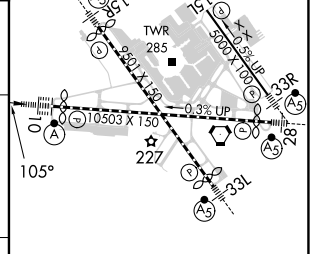
D-ATIS 115.1 127.8	POTOMAC APP CON 119.0 282.275 (020°-100°) 119.7 290.475 (131°-180°) 124.55 317.425 (101°-130°) 128.7 307.9 (181°-019°)	BALTIMORE TOWER 119.4 257.8	GND CON 121.9	CLNC DEL 118.05
------------------------------	--	---------------------------------------	-------------------------	---------------------------

ALTERNATE MISSED APCH FIX

WESTMINSTER
EMI ---
117.9
Chan 126



ELEV 143	D	TDZE 143
----------	---	----------



CATEGORY	A	B	C	D
S-ILS 10		343/18	200 (200-1/2)	
S-LOC 10	580/24	437 (500-1/2)	580/40	437 (500-3/4)
CIRCLING	640-1 497 (500-1)	660-1 517 (600-1)	700-1 1/2 557 (600-1 1/2)	880-2 1/4 737 (800-2 1/4)

TDZ/CL Rwy 10 and 33L					
REIL Rwy 15L and 33R					
HIRL all Rwy 10					
FAF to MAP 4.1 NM					
Knots	60	90	120	150	180
Min:Sec	4:06	2:44	2:03	1:38	1:22

ILS or LOC RWY 10

NE-3, 20 FEB 2025 to 20 MAR 2025

NE-3, 20 FEB 2025 to 20 MAR 2025