

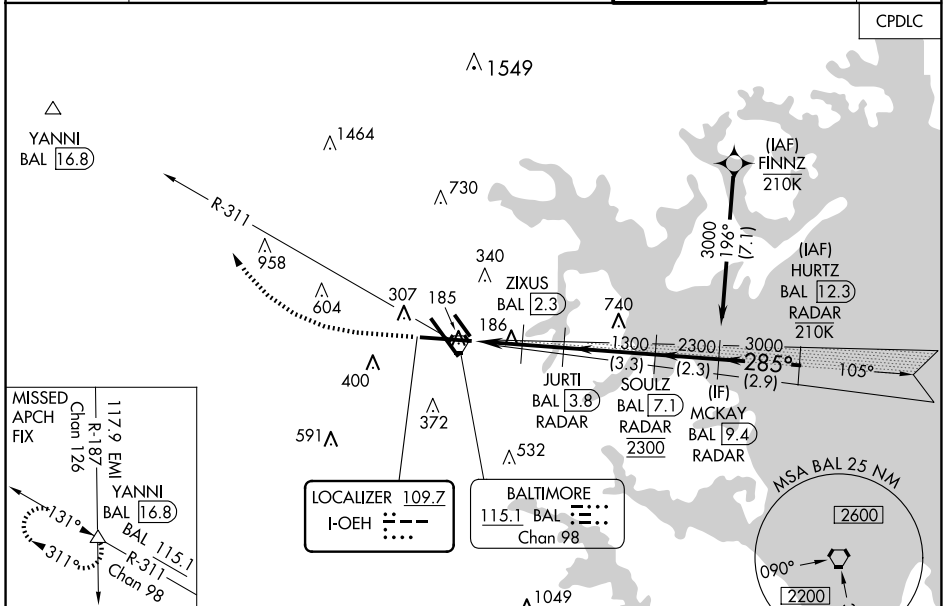
LOC I-OEH	APP CRS	Rwy Idg	9803
109.7	285°	TDZE	143
		Apt Elev	143

BALTIMORE/
WASHINGTON INTL THURGOOD MARSHALL (BWI)

ILS or LOC RWY 28

DME or RADAR required.		MALSR	MISSED APPROACH: Climb to 1500 then climbing right turn to 2600 on heading 319° and BAL VORTAC R-311 to YANNI INT/ BAL 16.8 DME and hold.
<p>▼ For inop ALS, increase S-LOC 28 Cat C/D visibility to 1 3/8 SM and increase ZIXUS fix S-LOC 28 Cat C/D visibility to RVR 4500.</p> <p>▲ *RVR 1800 authorized with use of FD or AP or HUD to DA.</p>			

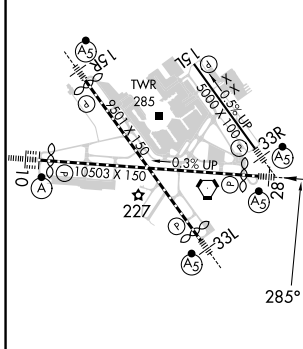
D-ATIS	POTOMAC APP CON	BALTIMORE TOWER	GND CON	CLNC DEL
115.1 127.8	119.0 282.275 (020°-100°) 119.7 290.475 (131°-180°) 124.55 317.425 (101°-130°) 128.7 307.9 (181°-019°)	119.4 257.8	121.9	118.05



NE-3, 20 FEB 2025 to 20 MAR 2025

NE-3, 20 FEB 2025 to 20 MAR 2025

ELEV 143	D	TDZE 143
-----------------	----------	-----------------



TDZ/CL Rwy 10 and 33L
REIL Rwy 15L and 33R
HIRL all Rwy

FAF to MAP 3.5 NM

Knots	60	90	120	150	180
Min:Sec	3:30	2:20	1:45	1:24	1:10

1500	2600	BAL	YANNI	VGSI and ILS glidepath not coincident (VGSI Angle 3.00/TCH 75).	MCKAY		
↑	hdg 319°	BAL R-311	△		BAL [9.4] RADAR		
		JURTI	BAL [3.8] RADAR	SOULZ	BAL [7.1] RADAR		
		ZIXUS	BAL [2.3] RADAR				
		BAL [1.1]	BAL [2.3]	1300			
		620	1300	285°	3000		
		0.8	1.2 NM	1.5 NM	3.3 NM	2.3 NM	
CATEGORY	A				B	C	D
S-ILS 28 *	343/24 200 (200-1/2)						
S-LOC 28	620/24		477 (500-1/2)		620/50 477 (500-1)		
CIRCLING	660-1		517 (600-1)		700-1 1/2 880-2 1/4 557 (600-1 1/2) 737 (800-2 1/4)		
ZIXUS FIX MINIMUMS (DME REQUIRED)							
S-LOC 28	460/24 317 (400-1/2)						
CIRCLING	660-1		517 (600-1)		700-1 1/2 880-2 1/4 557 (600-1 1/2) 737 (800-2 1/4)		