

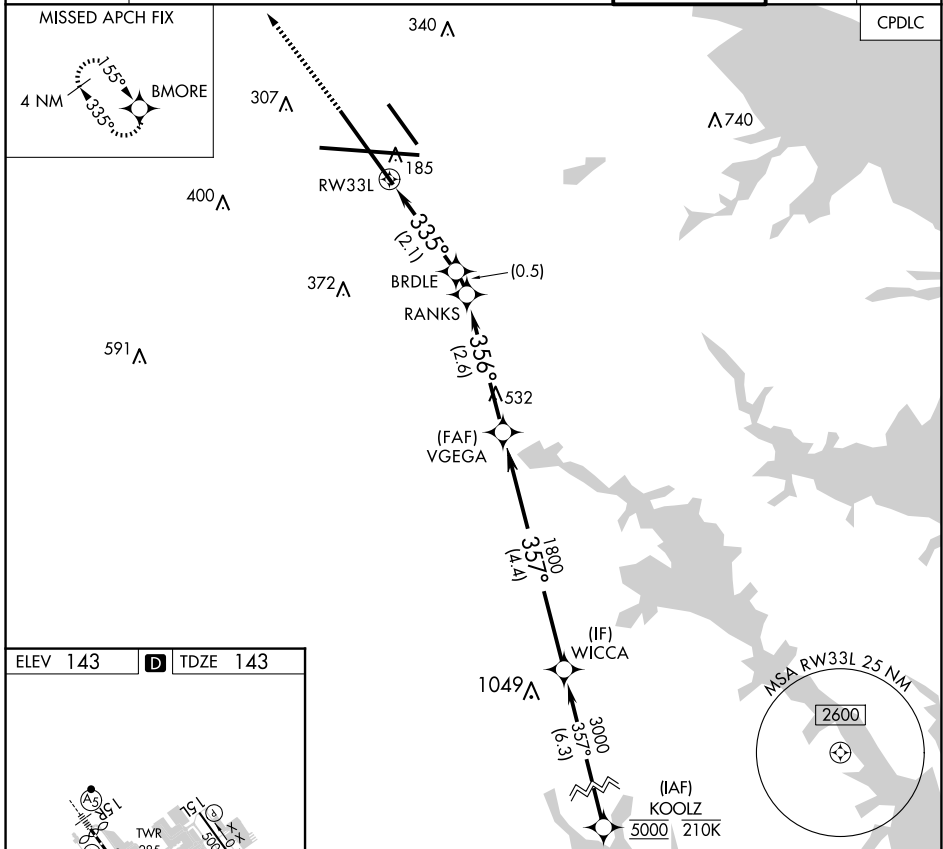
# RNAV (RNP) X RWY 33L

BALTIMORE/WASHINGTON INTL THURGOOD MARSHALL (BWI)

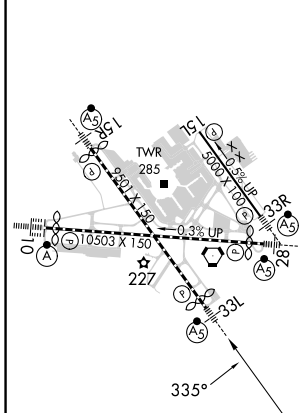
APP CRS <b>335°</b>	Rwy Idg TDZE Apt Elev	<b>8301</b> <b>143</b> <b>143</b>
------------------------	-----------------------------	---

RNP AR APCH - GPS, RF.	MALSR	MISSED APPROACH: Climb to 3000 direct BMORE and hold.
▼ For uncompensated Baro-VNAV systems, procedure NA below -11°C or above 54°C.		

D-ATIS <b>115.1 127.8</b>	POTOMAC APP CON (020°-100°) <b>119.7 290.475</b> (131°-180°) (101°-130°) <b>128.7 307.9</b> (181°-019°)	BALTIMORE TOWER <b>119.4 257.8</b>	GND CON <b>121.9</b>	CLNC DEL <b>118.05</b>
------------------------------	---	---------------------------------------	-------------------------	---------------------------



ELEV 143	<b>D</b>	TDZE 143
----------	----------	----------



TDZ/CL Rwy 10 and 33L  
REIL Rwy 15L and 33R  
HIRL all Rwy

3000	BMORE	VGSI and RNAV glidepath not coincident (VGSI Angle 3.00/TCH 72).	WICCA
RW33L	BRDLE	RANKS	VEGEGA
	839	986	1800
			357°
			3000
			1800
			GP 3.00°
			TCH 55
	2.1 NM	0.5 NM	2.6 NM
			4.4 NM
CATEGORY	A	B	C
RNP 0.30 DA		479/26	336 (400-1/2)

## AUTHORIZATION REQUIRED

# RNAV (RNP) X RWY 33L

NE-3, 20 FEB 2025 to 20 MAR 2025

NE-3, 20 FEB 2025 to 20 MAR 2025