

RNAV (RNP) Z RWY 33L

BALTIMORE/WASHINGTON INTL THURGOOD MARSHALL (BWI)

APP CRS	Rwy Idg	8301
335°	TDZE	143
	Apt Elev	143

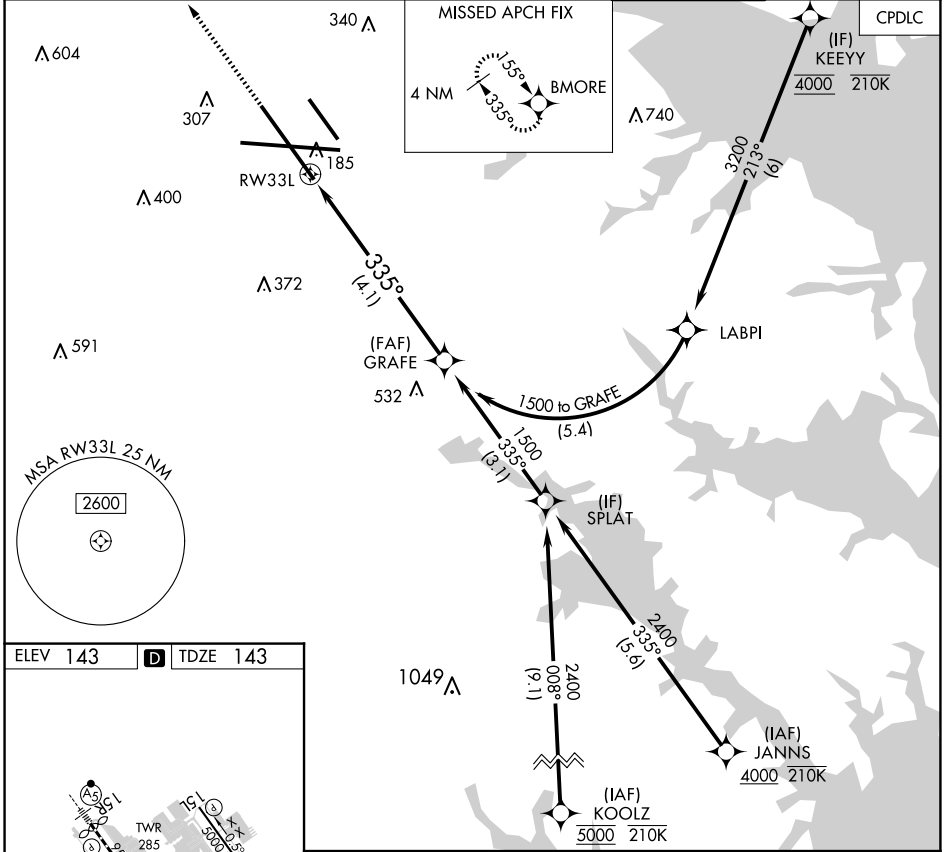
RNP APCH - GPS. From KEYEY: RF.

▼ For uncompensated Baro-VNAV systems, procedure NA below -11°C or above 54°C. For inop ALS, increase RNP 0.30 all Cats visibility to RVR 5500.

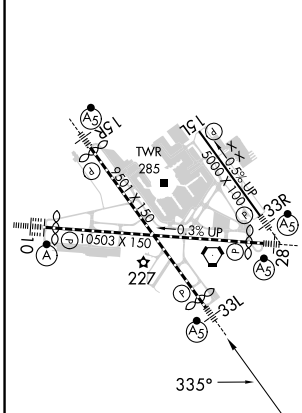
MALSR

MISSED APPROACH: Climb to 3000 direct BMORE and hold.

D-ATIS	POTOMAC APP CON	BALTIMORE TOWER	GND CON	CLNC DEL
115.1 127.8	(020°-100°) 119.0 282.275 (101°-130°) 124.55 317.425	119.4 257.8	121.9	118.05
	(131°-180°) 119.7 290.475 (181°-019°) 128.7 307.9			



ELEV 143	D	TDZE 143
----------	----------	----------



TDZ/CL Rwy 10 and 33L
 REIL Rwy 15L and 33R
 HIRL all Rwy

3000	BMORE	See planview for multiple IF locations. VGSI and RNAV glidepath not coincident (VGSI Angle 3.00/TCH 72).	GRAFE 1500
↑	✦		
RW33L			
335°			
GP 3.00° TCH 55			
4.1 NM			
CATEGORY	A	B	C
RNP 0.30 DA	496/30 353 (400-5%)		

AUTHORIZATION REQUIRED

RNAV (RNP) Z RWY 33L

NE-3, 20 FEB 2025 to 20 MAR 2025

NE-3, 20 FEB 2025 to 20 MAR 2025