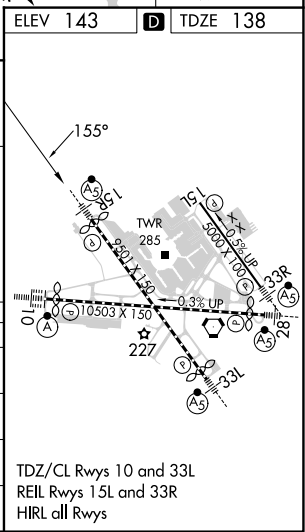
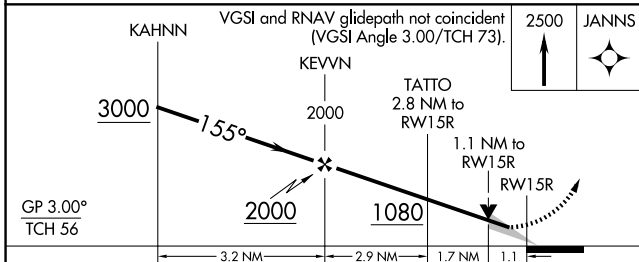
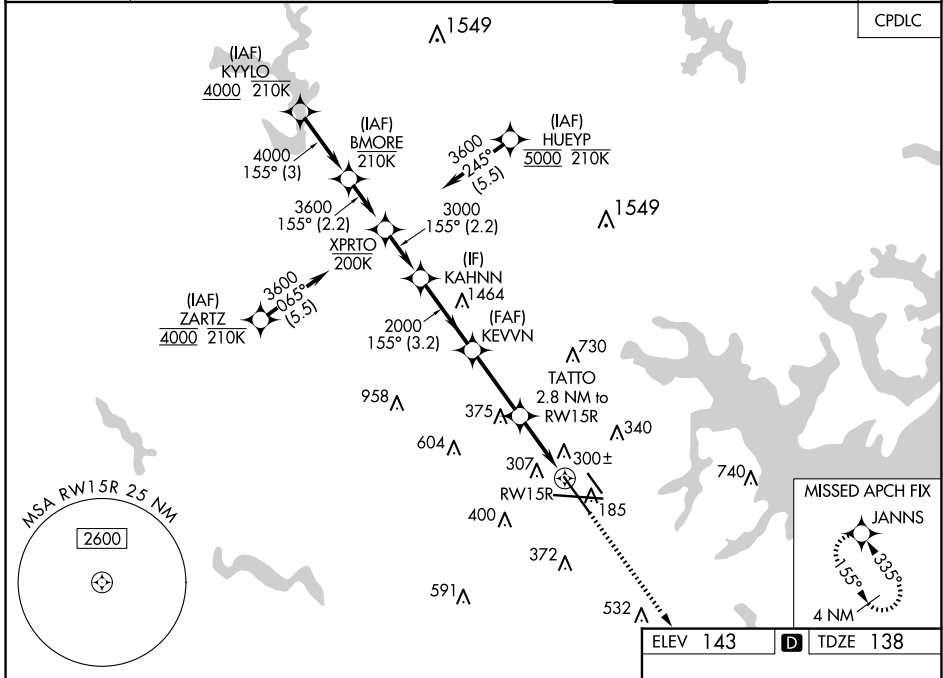


WAAS CH 66007 W15B	APP CRS 155°	Rwy Idg TDZE 138 Apt Elev 143	8301
--	------------------------	---	-------------

RNAV (GPS) Y RWY 15R

BALTIMORE/WASHINGTON INTL THURGOOD MARSHALL (BWI)

RNP APCH - GPS.		MALSR	MISSED APPROACH: Climb to 2500 direct JANNS and hold.		
<p>▼ For uncompensated Baro-VNAV systems, LNAV/VNAV NA below -11°C or above 54°C. ▲ Simultaneous approach authorized with Rwy 15L. For inop ALS, increase LNAV/VNAV all Cats visibility to RVR 6000. * RVR 1800 authorized with use of FD or AP or HUD to DA.</p>					
D-ATIS 115.1 127.8	POTOMAC APP CON 119.0 282.275 (020°-100°) 124.55 317.425 (101°-130°)	119.7 290.475 (131°-180°) 128.7 307.9 (181°-019°)	BALTIMORE TOWER 119.4 257.8	GND CON 121.9	CLNC DEL 118.05



CATEGORY	A	B	C	D
LPV DA	*338/24		200 (200-½)	
LNAV/VNAV DA	557/40		419 (500-¾)	
LNAV MDA	560/24		560/40	
	422 (500-½)		422 (500-¾)	
CIRCLING	640-1		700-1½	
	497 (500-1)		557 (600-1½)	
	660-1		880-2¼	
	517 (600-1)		737 (800-2¼)	

TDZ/CL Rwy 10 and 33L
REIL Rwy 15L and 33R
HIRL all Rwy

RNAV (GPS) Y RWY 15R

NE-3, 20 FEB 2025 to 20 MAR 2025

NE-3, 20 FEB 2025 to 20 MAR 2025