

LOC I-GGG	APP CRS	Rwy Idg	9200
109.5	131°	TDZE	358
		Apt Elev	366

ILS or LOC RWY 13

EAST TEXAS RGNL (GGG)

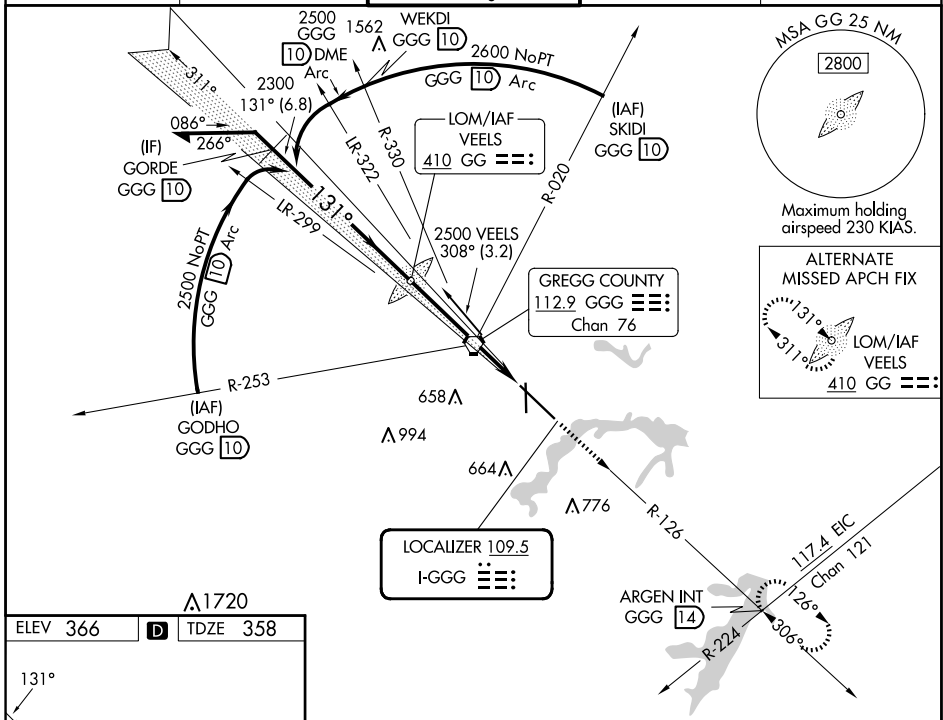
ADF or DME required for procedure entry.

▼ For inop ALS, increase S-ILS 13 Cat E visibility to RVR 4000, S-LOC 13 Cat C/D/E visibility to 1 3/8 SM. When local altimeter setting not received use Gilmer altimeter setting and ▲ increase DA 59 feet, all MDA 60 feet, increase LOC and Circling Cat C/D/E visibility 1/4 SM. For inop ALS when using Gilmer altimeter setting increase S-ILS 13 all Cats to RVR 4500, S-LOC 13 Cat C/D/E visibility to 1 3/8 SM. * RVR 1800 authorized with the use of FD or AP or HUD to DA (NA when using Gilmer altimeter setting).

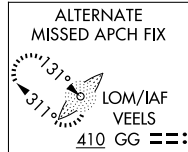


MISSED APPROACH:
Climb to 3000 via GGG VORTAC R-126 to ARGEN Int/GGG 14 DME and hold.

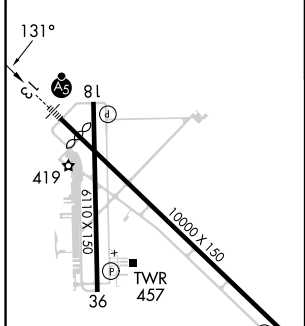
ATIS	LONGVIEW APP CON *	EASTEX TOWER *	GND CON	UNICOM
119.65	124.675 257.975	119.2 (CTAF) 0377.05	121.6	122.95



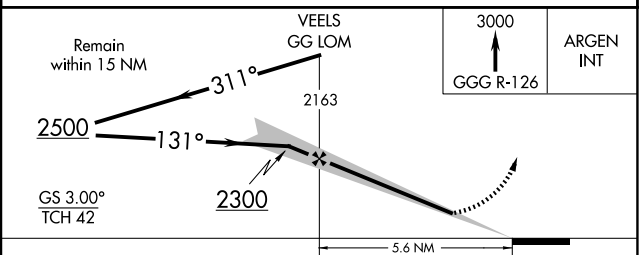
Maximum holding
airspeed 230 KIAS.



ELEV 366	D	TDZE 358
----------	---	----------



HIRL Rwy 13-31	MIRL Rwy 18-36				
FAF to MAP 5.6 NM					
Knots	60	90	120	150	180
Min:Sec	5:36	3:44	2:48	2:14	1:52



CATEGORY	A	B	C	D	E
S-ILS 13	*558/24				200 (200-1/2)
S-LOC 13	860/24	502 (500-1/2)	860/50	502 (500-1)	860/60 502 (500-1/4)
CIRCLING	860-1	494 (500-1)	980-1 3/4 614 (700-1 3/4)	1080-2 1/4 714 (800-2 1/4)	1080-2 1/2 714 (800-2 1/2)

SC-2, 20 FEB 2025 to 20 MAR 2025

SC-2, 20 FEB 2025 to 20 MAR 2025