

WAAS CH 61100 W13A	APP CRS 131°	Rwy ldg 9200 TDZE 358 Apt Elev 366
--	------------------------	--

RNAV (GPS) RWY 13

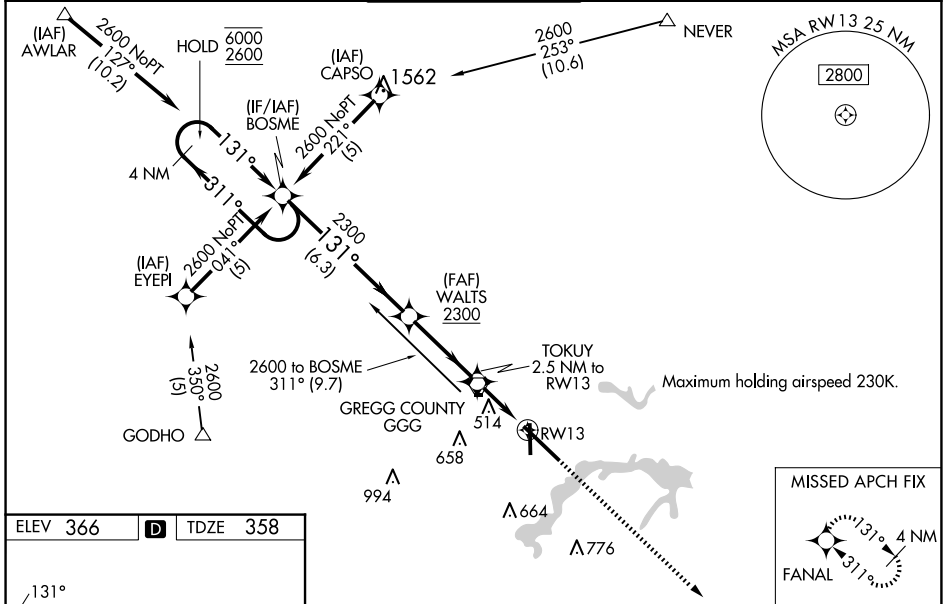
EAST TEXAS RGNL (GGG)

RNP APCH-GPS.

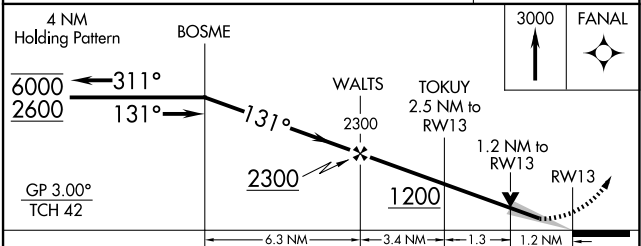
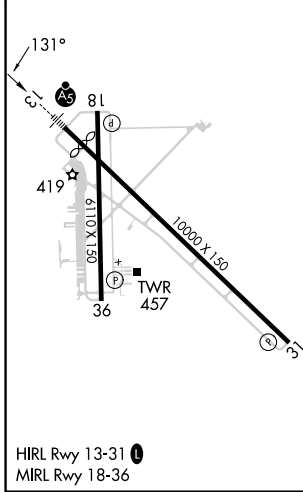
⚠ Baro-VNAV and VDP NA when using Gilmer altimeter setting. For inop ALS, increase LPV Cat E visibility to RVR 4000, LNAV/VNAV all Cats visibility to RVR 5500, and LNAV Cat E visibility to 1 1/4 SM. When local altimeter setting not received use Gilmer altimeter setting and increase LPV DA to 671 feet; increase LNAV/VNAV DA to 785 feet; increase all MDA 60 feet, and LNAV visibility Cat C to RVR 5000, and Circling visibility Cats C/D/E 1/4 SM. For inop ALS when using Gilmer altimeter setting, increase LPV all Cats visibility to RVR 4500, LNAV/VNAV Cat E visibility to 1 1/4 SM, and LNAV Cats C/D/E visibility to 1 3/8 SM. For uncompensated Baro-VNAV systems, LNAV/VNAV NA below -15°C or above 54°C.

MALSR
 MISSED APPROACH:
Climb to 3000 direct
FANAL and hold.

ATIS 119.65	LONGVIEW APP CON* 124.675 257.975	EASTEX TOWER* 119.2 (CTAF) 377.05	GND CON 121.6	UNICOM 122.95
-----------------------	---	---	-------------------------	-------------------------



ELEV 366	D	TDZE 358
-----------------	----------	-----------------



CATEGORY	A	B	C	D	E
LPV DA	612/24 254 (300-1/2)				
LNAV/VNAV DA	726/40 368 (400-3/4)				
LNAV MDA	780/24	422 (500-1/2)	780/40 422 (500-3/4)	780/50	422 (500-1)
CIRCLING	860-1	494 (500-1)	980-1 3/4 614 (700-1 3/4)	1080-2 1/4 714 (800-2 1/4)	1080-2 1/2 714 (800-2 1/2)

SC-2, 20 FEB 2025 to 20 MAR 2025

SC-2, 20 FEB 2025 to 20 MAR 2025