

WAAS CH 99426 W18A	APP CRS 176°	Rwy Idg TDZE Apt Elev	6109 356 366
--	------------------------	-----------------------------	---

RNAV (GPS) RWY 18

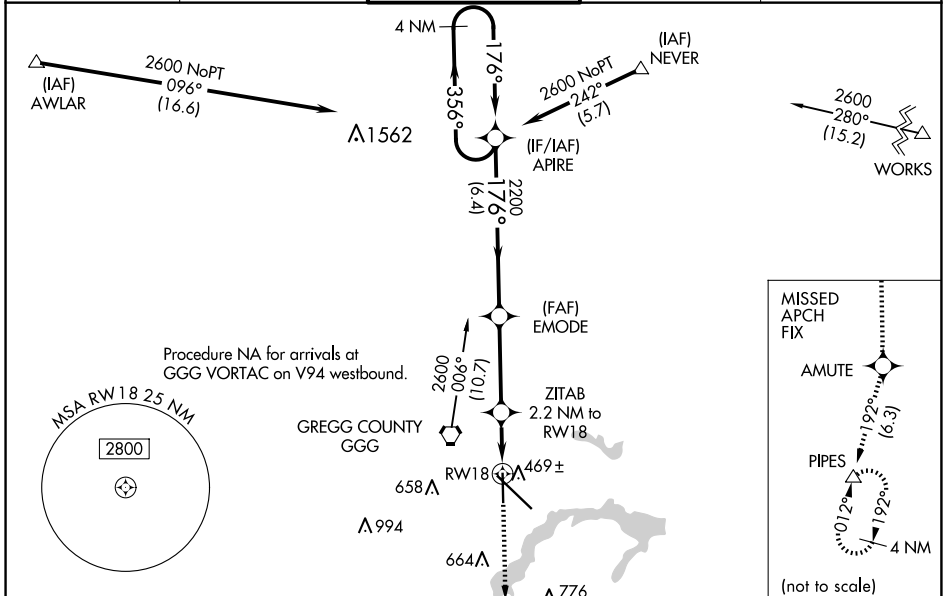
EAST TEXAS RGNL (GGG)

RNP APCH - GPS.

⚠ Baro-VNAV and VDP NA when using Gilmer altimeter setting. For uncompensated Baro-VNAV systems, LNAV/VNAV NA below -15°C or above 54°C. Rwy 18 helicopter visibility reduction below ¼ SM NA. When local altimeter setting not received, use Gilmer altimeter setting and increase LPV DA to 689 feet, LNAV/VNAV DA to 711 feet and all MDA 60 feet; increase LPV visibility all Cats ½ SM and LNAV and Circling visibility Cats C/D ¼ SM.

MISSED APPROACH:
Climb to 2400 direct AMUTE and on track 192° to PIPES and hold.

ATIS 119.65	LONGVIEW APP CON* 124.675 257.975	EASTEX TOWER* 119.2 (CTAF) 0377.05	GND CON 121.6	UNICOM 122.95
-----------------------	---	--	-------------------------	-------------------------

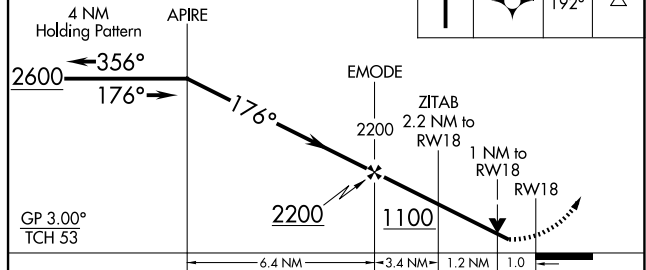
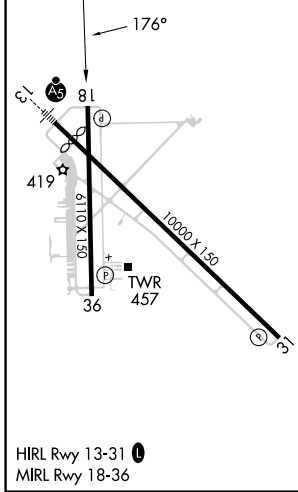


SC-2, 20 FEB 2025 to 20 MAR 2025

SC-2, 20 FEB 2025 to 20 MAR 2025

ELEV 366	D	TDZE 356
-----------------	----------	-----------------

VGSI and RNAV glidepath not coincident (VGSI Angle 3.00°/TCH 59').



CATEGORY	A	B	C	D
LPV DA		630-7/8	274 (300-7/8)	
LNAV/VNAV DA		652-1	296 (300-1)	
LNAV MDA		720-1	364 (400-1)	
CIRCLING	860-1	494 (500-1)	980-1 3/4 614 (700-1 3/4)	1080-2 1/4 714 (800-2 1/4)