

|  |                        |                             |   |
|--|------------------------|-----------------------------|---|
| WAAS<br>CH <b>49125</b><br><b>W22A</b> | APP CRS<br><b>215°</b> | Rwy Idg<br>TDZE<br>Apt Elev | <b>5658</b><br><b>2355</b><br><b>2380</b> |
|--|------------------------|-----------------------------|---|

# RNAV (GPS) RWY 22

AVENGER FLD (SWW)

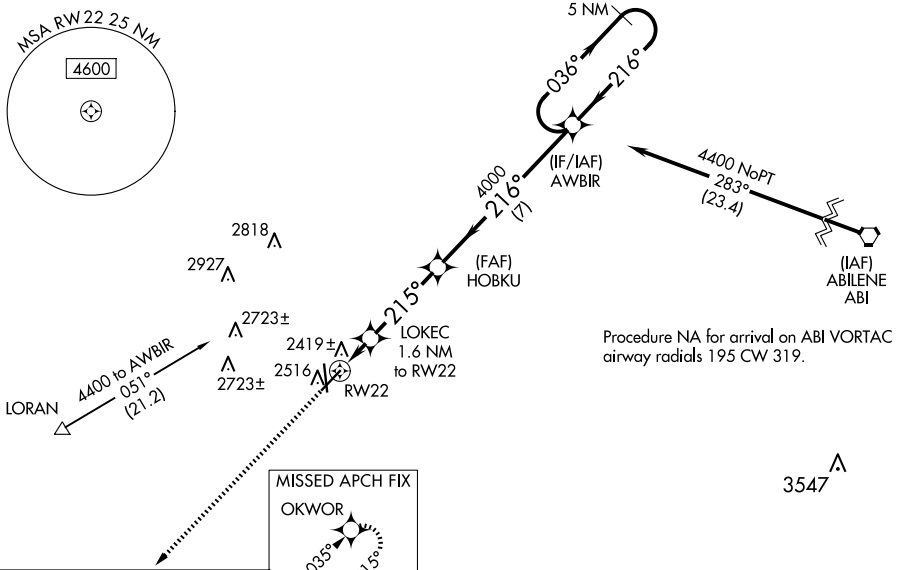
**⚠** When VGSI inop, Circling Rwy 17 and 22 NA at night. Baro-VNAV NA when using Snyder altimeter setting. For uncompensated Baro-VNAV systems, LNAV/VNAV NA below -19°C (-2°F) or above 29°C (84°F). When VGSI inop, Straight in/Circling Rwy 22 procedure NA at night. DME/DME RNP-0.3 NA. Visibility reduction by helicopters NA. When local altimeter setting not received, use Snyder altimeter setting and increase LPV and LNAV/VNAV DA to 2677 feet, increase all MDAs 80 feet; increase LPV and LNAV/VNAV visibility all Cats 1/8 SM, LNAV visibility Cats C and D and Circling Cat C and D visibility 1/4 SM.

**MISSED APPROACH:**  
Climb to 4400 direct OKWOR and hold.

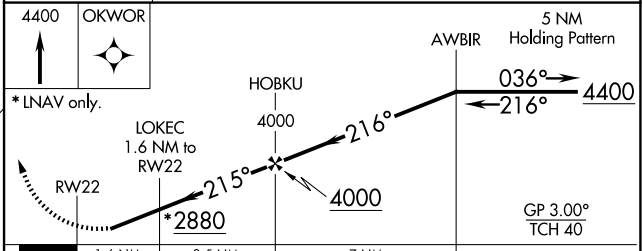
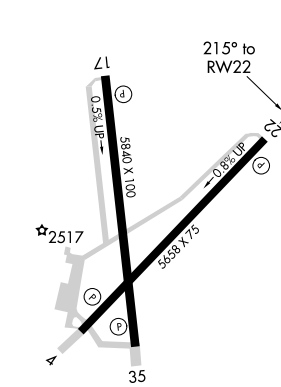
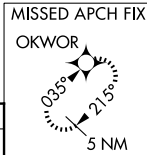
AWOS-3  
**119.025**

ABILENE APP CON  
**127.2 282.3**

UNICOM  
**122.8 (CTAF)**



ELEV 2380 TDZE 2355



| CATEGORY     | A      | B           | C                     | D                             |
|--------------|--------|-------------|-----------------------|-------------------------------|
| LPV DA       |        | 2605-1      | 250 (300-1)           |                               |
| LNAV/VNAV DA |        | 2605-1      | 250 (300-1)           |                               |
| LNAV MDA     |        | 2680-1      | 325 (300-1)           |                               |
| CIRCLING     | 2880-1 | 500 (500-1) | 3080-2<br>700 (700-2) | 3080-2 1/4<br>700 (700-2 1/4) |

REIL Rwy 17-35  
MIRL Rwy 4-22 and 17-35

SC-2, 20 FEB 2025 to 20 MAR 2025

SC-2, 20 FEB 2025 to 20 MAR 2025