

# RNAV (GPS) RWY 28

CHIPPEWA COUNTY INTL (CIU)

APP CRS <b>277°</b>	Rwy Idg TDZE Apt Elev	<b>5000</b> <b>799</b> <b>799</b>
------------------------	-----------------------------	---

RNP APCH.

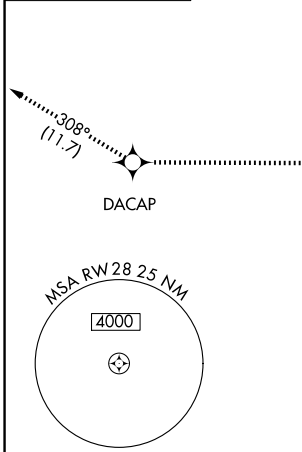
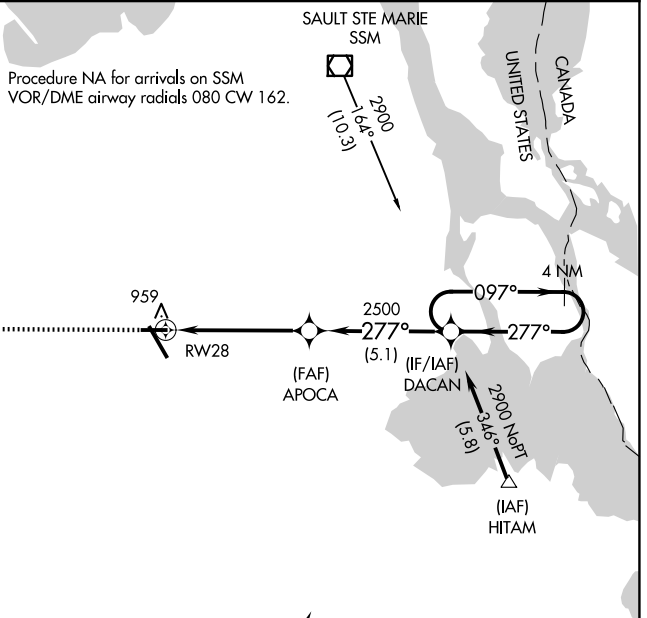
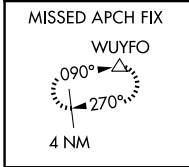
**⚠** Rwy 28 helicopter visibility reduction below 1 SM NA. When local altimeter setting not received, use Sault Ste Marie Muni/Sanderson Fld altimeter setting; increase all MDA 60 feet, increase LNAV and Circling visibility Cat C/D ¼ SM. Straight-in and Circling Rwy 28 NA at night.

MISSED APPROACH: Climb to 3000 direct DACAP and track 308° to WUYFO and hold.

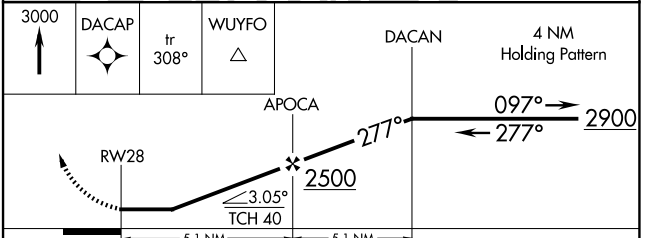
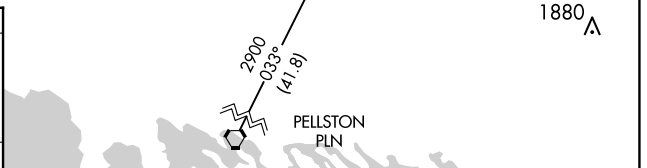
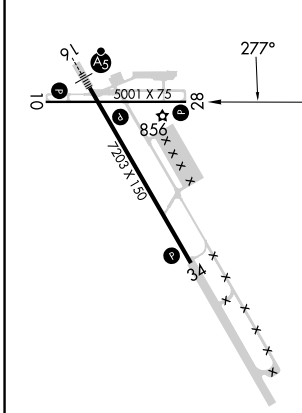
AWOS-3PT  
**127.575**

TORONTO CENTER  
**132.65 344.5**

UNICOM  
**123.0 (CTAF) 0**



ELEV 799 **D** TDZE 799



CATEGORY	A	B	C	D
LNAV MDA	1220-1	421 (500-1)	1220-1½	421 (500-1½)
<b>C</b> CIRCLING	1260-1	461 (500-1)	1260-1½ 461 (500-1½)	1360-2 561 (600-2)

REIL Rws 10, 28 and 34 **0**

MIRL Rwy 10-28 **0**

HIRL Rwy 16-34 **0**

EC-1, 20 FEB 2025 to 20 MAR 2025

EC-1, 20 FEB 2025 to 20 MAR 2025