

25051  
**AIRPORT DIAGRAM**

AL-827 (FAA)

VALLEY INTL (H.R.L.)  
HARLINGEN, TEXAS

ATIS  
124.85  
HARLINGEN TOWER \*  
119.3 (CTAF) 317.6  
GND CON  
121.7

97°39'W

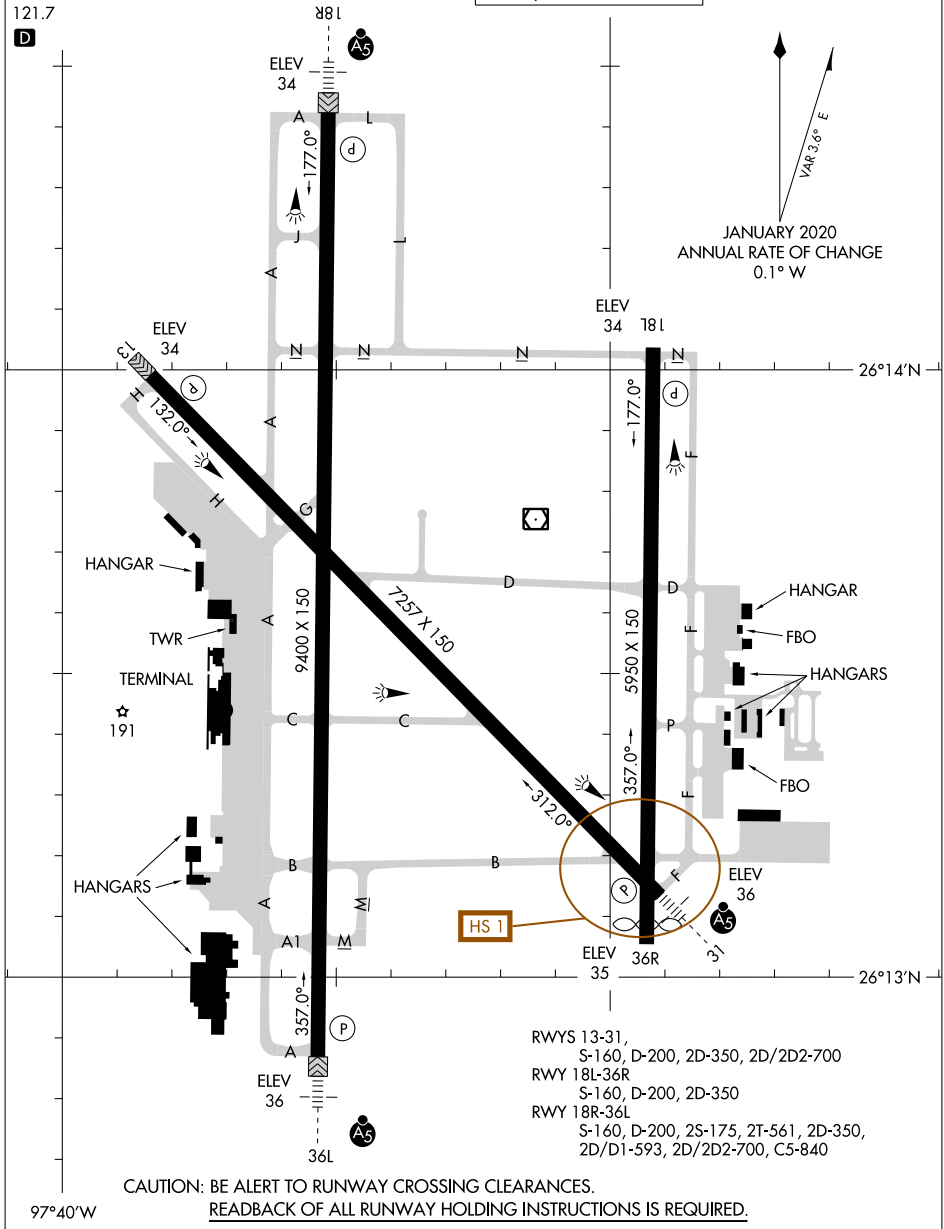
FIELD  
ELEV  
36

HIRL Rwys 18R-36L and 13-31  
MIRL Rwy 18L-36R  
REIL Rwys 18L and 13

VAR 3.6° E  
JANUARY 2020  
ANNUAL RATE OF CHANGE  
0.1° W

SC-3, 20 FEB 2025 to 20 MAR 2025

SC-3, 20 FEB 2025 to 20 MAR 2025



RWYS 13-31,  
S-160, D-200, 2D-350, 2D/2D2-700  
RWY 18L-36R  
S-160, D-200, 2D-350  
RWY 18R-36L  
S-160, D-200, 2S-175, 2T-561, 2D-350,  
2D/D1-593, 2D/2D2-700, C5-840

CAUTION: BE ALERT TO RUNWAY CROSSING CLEARANCES.  
READBACK OF ALL RUNWAY HOLDING INSTRUCTIONS IS REQUIRED.

97°40'W

25051  
**AIRPORT DIAGRAM**

HARLINGEN, TEXAS  
VALLEY INTL (H.R.L.)