


|                |             |          |           |
|----------------|-------------|----------|-----------|
| LOC/DME I-HRL  | APP CRS     | Rwy Idg  | 9400      |
| <b>111.5</b>   | <b>178°</b> | TDZE     | <b>35</b> |
| Chan <b>52</b> |             | Apt Elev | <b>36</b> |

# ILS or LOC RWY 18R

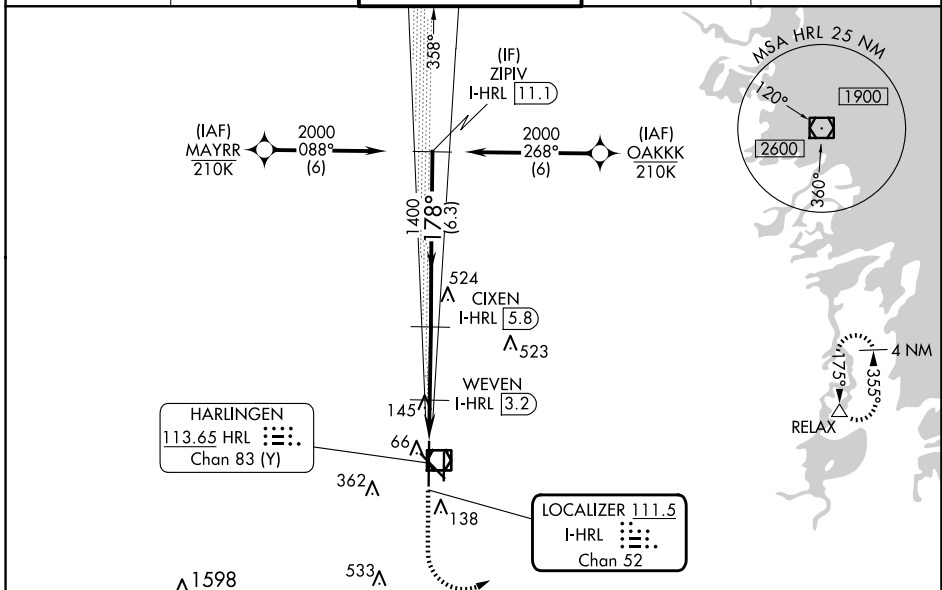
VALLEY INTL (H.R.L.)

RNP APCH - GPS.

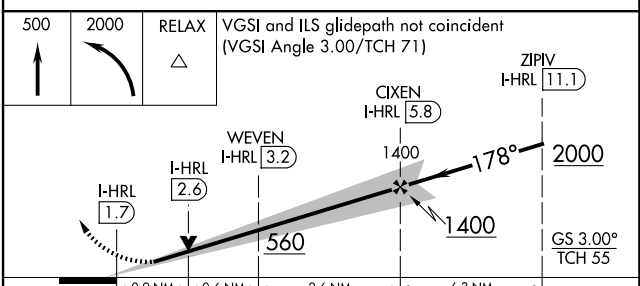
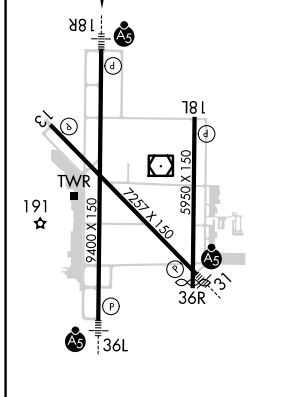
▼ When local altimeter setting not received, use Port Isabel altimeter setting: increase S-ILS 18R DA to 277 feet; increase all MDAs 60 feet and S-LOC 18R visibility Cat C/D to RVR 4000 and Circling Cat C/D ¼ SM. For inop ALS when using Port Isabel altimeter setting, increase S-LOC 18R visibility Cat C/D to RVR 5500. VDP NA when using Port Isabel altimeter setting.  
 ▲ \*RVR 1800 authorized with use of FD or AP or HUD to DA. (NA when using secondary altimeter setting).

MALSR  
  
 MISSED APPROACH: Climb to 500 then climbing left turn to 2000 direct RELAX and hold.

|                       |                                      |  |                         |                         |
|-----------------------|--------------------------------------|--|-------------------------|-------------------------|
| ATIS<br><b>124.85</b> | VALLEY APP CON<br><b>120.7 279.5</b> | HARLINGEN TOWER ★<br><b>119.3 (CTAF) 0 317.6</b> | GND CON<br><b>121.7</b> | UNICOM<br><b>122.95</b> |
|-----------------------|--------------------------------------|--|-------------------------|-------------------------|



|         |   |         |
|---------|---|---------|
| ELEV 36 | D | TDZE 35 |
|---------|---|---------|



|            |                      |                      |                        |                      |
|------------|----------------------|----------------------|------------------------|----------------------|
| CATEGORY   | A                    | B                    | C                      | D                    |
| S-ILS 18R* | 235/24 200 (200-½)   |                      |                        |                      |
| S-LOC 18R  | 400/24               | 365 (400-½)          | 400/35                 | 365 (400-¾)          |
| ☑ CIRCLING | 460-1<br>424 (500-1) | 560-1<br>524 (600-1) | 600-1½<br>564 (700-1½) | 680-2<br>644 (700-2) |

MIRL Rwy 18L-36R  
 REIL Rwy 13 and 18L  
 HIRL Rwy 13-31 and 18R-36L

SC-3, 20 FEB 2025 to 20 MAR 2025

SC-3, 20 FEB 2025 to 20 MAR 2025