

|   |                        |   |
|---|------------------------|---|
| LOC/DME I-RVZ<br><b>111.5</b><br>Chan <b>52</b> | APP CRS<br><b>358°</b> | Rwy Idg <b>9400</b><br>TDZE <b>36</b><br>Apt Elev <b>36</b> |
|---|------------------------|---|

# ILS or LOC RWY 36L

VALLEY INTL (HRL)

RNP APCH - GPS.

DME required.

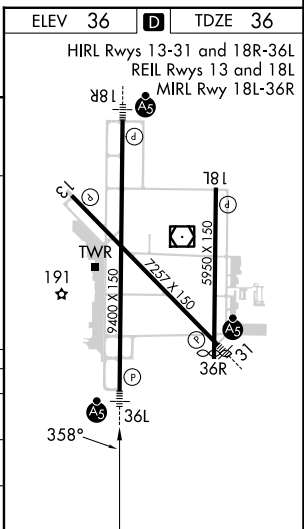
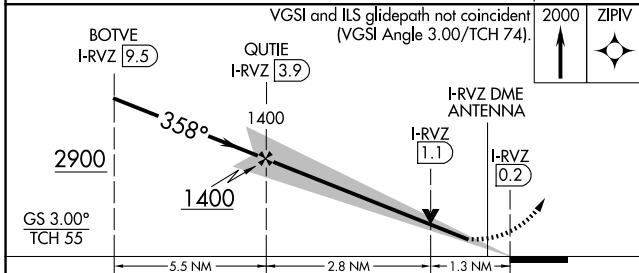
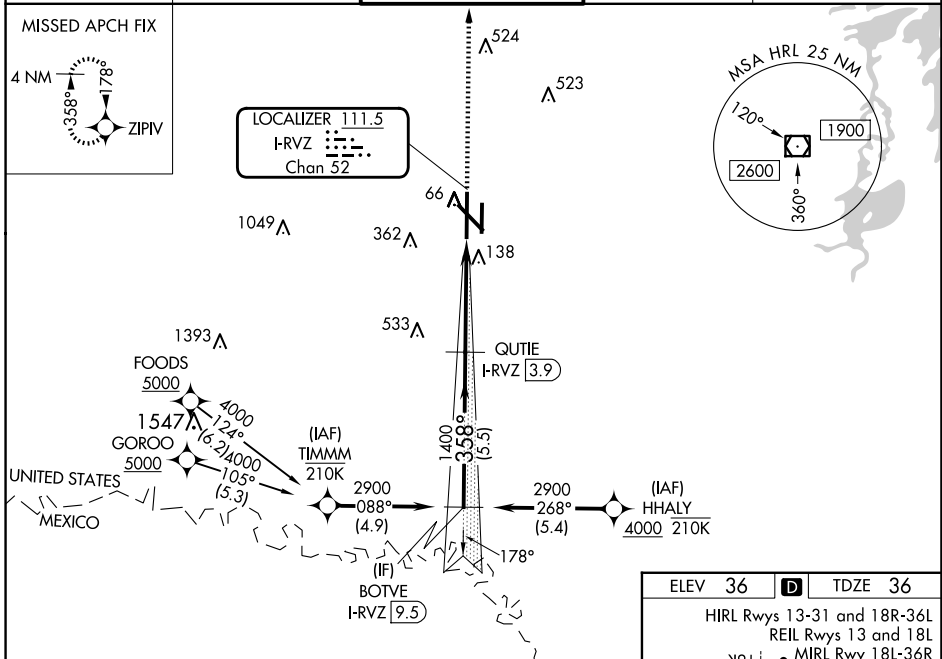
▼ VDP NA when using PIL altimeter setting. When local altimeter setting not received, use Port Isabel altimeter setting and increase S-ILS 36L DA to 278 feet; increase all MDAs 60 feet and S-LOC 36L Cats C and D visibilities to RVR 5500 and Circling visibility Cats C and D ½ SM. For inop ALS, increase S-LOC 36L Cat C/D visibility to 1 ½ SM.  
 ▲ \* RVR 1800 authorized with use of FD or AP or HUD to DA (NA when using PIL altimeter setting).

MALSR



MISSED APPROACH:  
Climb to 2000 direct ZIPIV and hold.

|                       |                                      |  |                         |                         |
|-----------------------|--------------------------------------|--|-------------------------|-------------------------|
| ATIS<br><b>124.85</b> | VALLEY APP CON<br><b>120.7 279.5</b> | HARLINGEN TOWER ★<br><b>119.3 (CTAF) 317.6</b> | GND CON<br><b>121.7</b> | UNICOM<br><b>122.95</b> |
|-----------------------|--------------------------------------|--|-------------------------|-------------------------|



| CATEGORY    | A                    | B                    | C                      | D                    |
|-------------|----------------------|----------------------|------------------------|----------------------|
| S-ILS 36L * | 236/24 200 (200-½)   |                      |                        |                      |
| S-LOC 36L   | 500/24               | 464 (500-½)          | 500/50                 | 464 (500-1)          |
| CIRCLING    | 500-1<br>464 (500-1) | 560-1<br>524 (600-1) | 600-1¾<br>564 (600-1¾) | 680-2<br>644 (700-2) |

SC-3, 20 FEB 2025 to 20 MAR 2025

SC-3, 20 FEB 2025 to 20 MAR 2025