

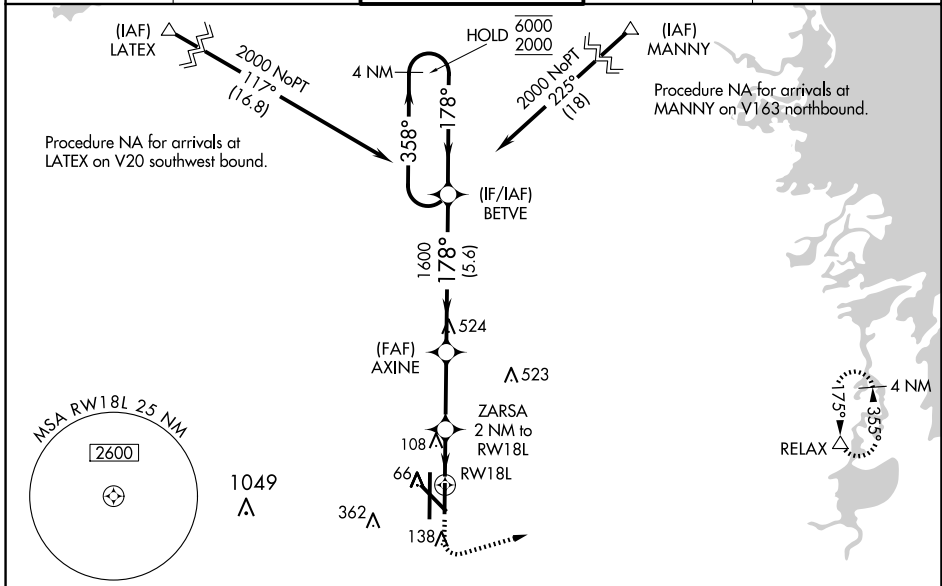
WAAS CH <b>90430</b> <b>W18B</b>	APP CRS <b>178°</b>	Rwy Idg TDZE Apt Elev	<b>5949</b> <b>34</b> <b>36</b>
--	------------------------	-----------------------------	---------------------------------------

# RNAV (GPS) RWY 18L

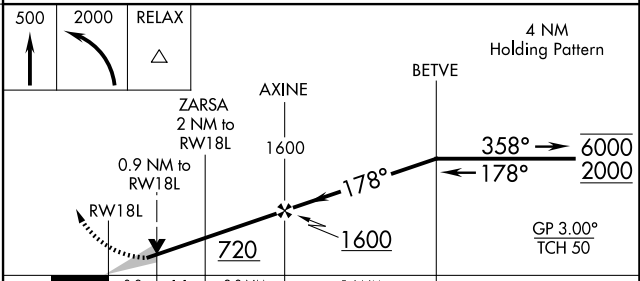
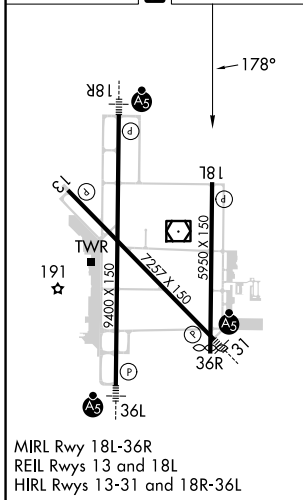
VALLEY INTL (H.R.L.)

RNP APCH - GPS.		<p><b>⚠</b> Baro-VNAV and VDP NA when using Port Isabel altimeter setting. For uncompensated Baro-VNAV systems, LNAV/VNAV NA below -1°C or above 54°C. When local altimeter setting not received, use Port Isabel altimeter setting; increase LPV DA to 276 feet; increase LNAV/VNAV DA to 326 feet and all visibilities 1/8 SM; increase all MDAs 60 feet and LNAV visibility Cats C and D 1/8 SM, and Circling visibility Cat C and D 1/4 SM.</p>		<p><b>MISSED APPROACH:</b> Climb to 500 then climbing left turn to 2000 direct RELAX and hold.</p>	
-----------------	--	---	--	--	--

ATIS <b>124.85</b>	VALLEY APP CON <b>120.7 279.5</b>	HARLINGEN TOWER ★ <b>119.3(CTAF) 0 317.6</b>	GND CON <b>121.7</b>	UNICOM <b>122.95</b>
-----------------------	--------------------------------------	---	-------------------------	-------------------------



ELEV 36	<b>D</b>	TDZE 34
---------	----------	---------



CATEGORY	A	B	C	D
LPV DA		234-3/4	200 (200-3/4)	
LNAV/VNAV DA		284-3/4	250 (300-3/4)	
LNAV MDA		360-1	326 (400-1)	
<b>C</b> CIRCLING	460-1 424 (500-1)	560-1 524 (600-1)	600-1 1/2 564 (600-1 1/2)	680-2 644 (700-2)

SC-3, 20 FEB 2025 to 20 MAR 2025

SC-3, 20 FEB 2025 to 20 MAR 2025