

WAAS CH <b>72830</b> <b>W36A</b>	APP CRS <b>358°</b>	Rwy Idg TDZE Apt Elev	<b>5759</b> <b>36</b> <b>36</b>
--	------------------------	-----------------------------	---------------------------------------

# RNAV (GPS) RWY 36R

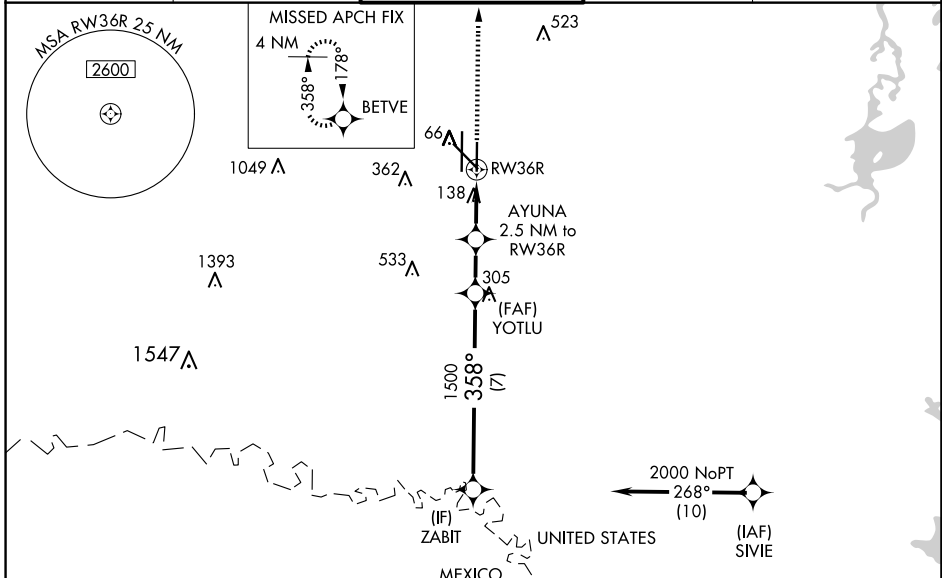
VALLEY INTL (HRL)

RNP APCH - GPS.

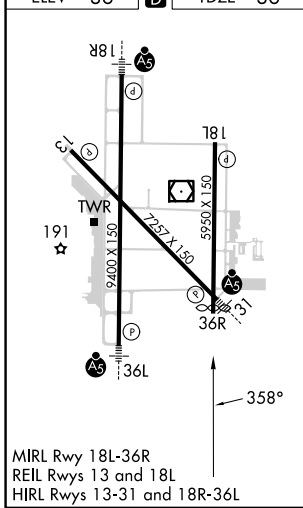
**⚠** For uncompensated Baro-VNAV systems, LNAV/VNAV NA below -1°C or above 54°C. Baro-VNAV and VDP NA when using Port Isabel altimeter setting. When local altimeter setting not received, use Port Isabel altimeter setting: increase LPV DA to 278 feet; increase LNAV/VNAV DA to 328 feet and all visibilities ½ SM, increase all MDAs 60 feet and LNAV visibility Cat C and D ½ SM, and Circling visibility Cats C and D ¼ SM.

MISSED APPROACH: Climb to 2000 direct BETVE and hold.

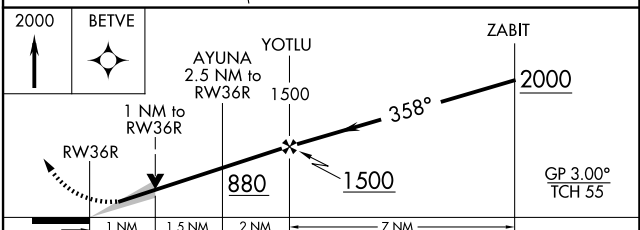
ATIS <b>124.85</b>	VALLEY APP CON <b>120.7 279.5</b>	HARLINGEN TOWER ★ <b>119.3 (CTAF) 317.6</b>	GND CON <b>121.7</b>	UNICOM <b>122.95</b>
-----------------------	--------------------------------------	--	-------------------------	-------------------------



ELEV 36	<b>D</b>	TDZE 36
---------	----------	---------



MIRL Rwy 18L-36R  
REIL Rwy 13 and 18L  
HIRL Rwy 13-31 and 18R-36L



CATEGORY	A	B	C	D
LPV DA		236-¾	200 (200-¾)	
LNAV/VNAV DA		286-¾	250 (300-¾)	
LNAV MDA		400-1	364 (400-1)	
<b>C</b> CIRCLING	460-1 424 (500-1)	560-1 524 (600-1)	600-1½ 564 (600-1½)	680-2 644 (700-2)

SC-3, 20 FEB 2025 to 20 MAR 2025

SC-3, 20 FEB 2025 to 20 MAR 2025