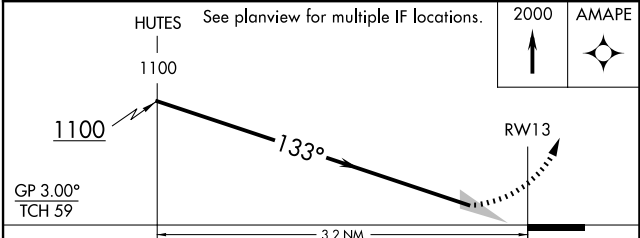
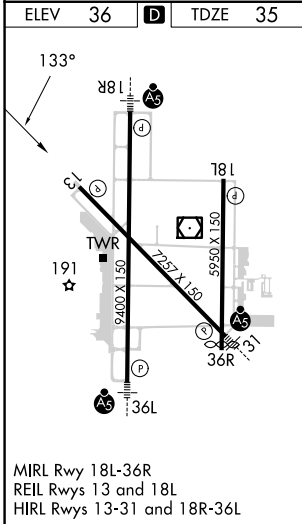
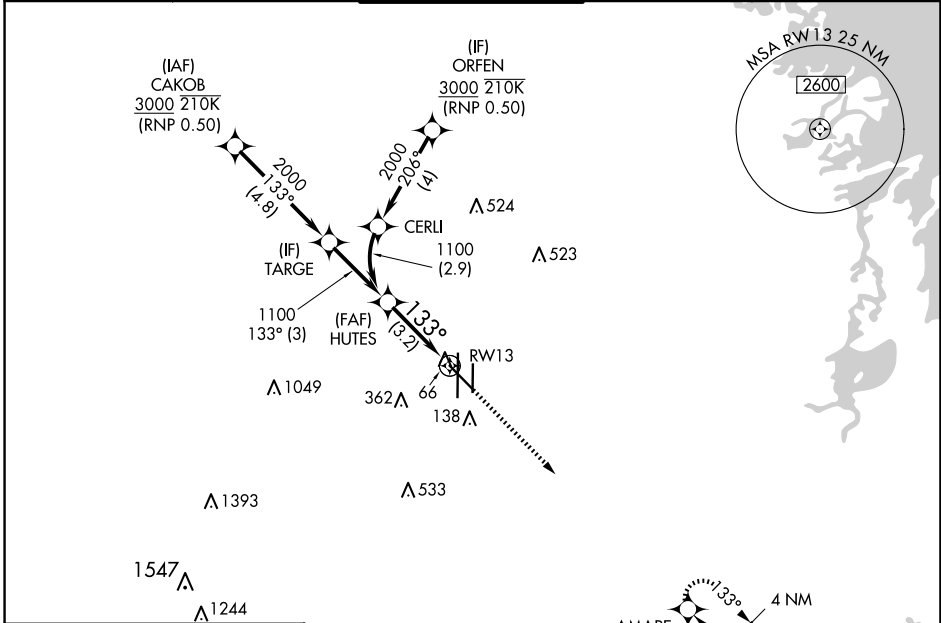


RNAV (RNP) Z RWY 13

VALLEY INTL (HRL)

APP CRS 133°	Rwy Idg 7257
	TDZE 35
	Apt Elev 36

RNP AR APCH - GPS.			MISSED APPROACH: Climb to 2000 direct AMAPE and hold.	
<p>▽ For uncompensated Baro-VNAV systems, procedure NA below -1°C or above 54°C. When local altimeter setting not received, procedure NA.</p>				
ATIS 124.85	VALLEY APP CON 120.7 279.5	HARLINGEN TOWER ★ 119.3 (CTAF) 0 317.6	GND CON 121.7	UNICOM 122.95



CATEGORY	A	B	C	D
RNP 0.15 DA		285-¾	250 (300-¾)	
RNP 0.30 DA		342-⅞	307 (400-⅞)	

AUTHORIZATION REQUIRED

SC-3, 20 FEB 2025 to 20 MAR 2025

SC-3, 20 FEB 2025 to 20 MAR 2025