

RNAV (RNP) Z RWY 18R VALLEY INTL (HRL)

APP CRS	Rwy Idg	9400
178°	TDZE	35
	Apt Elev	36

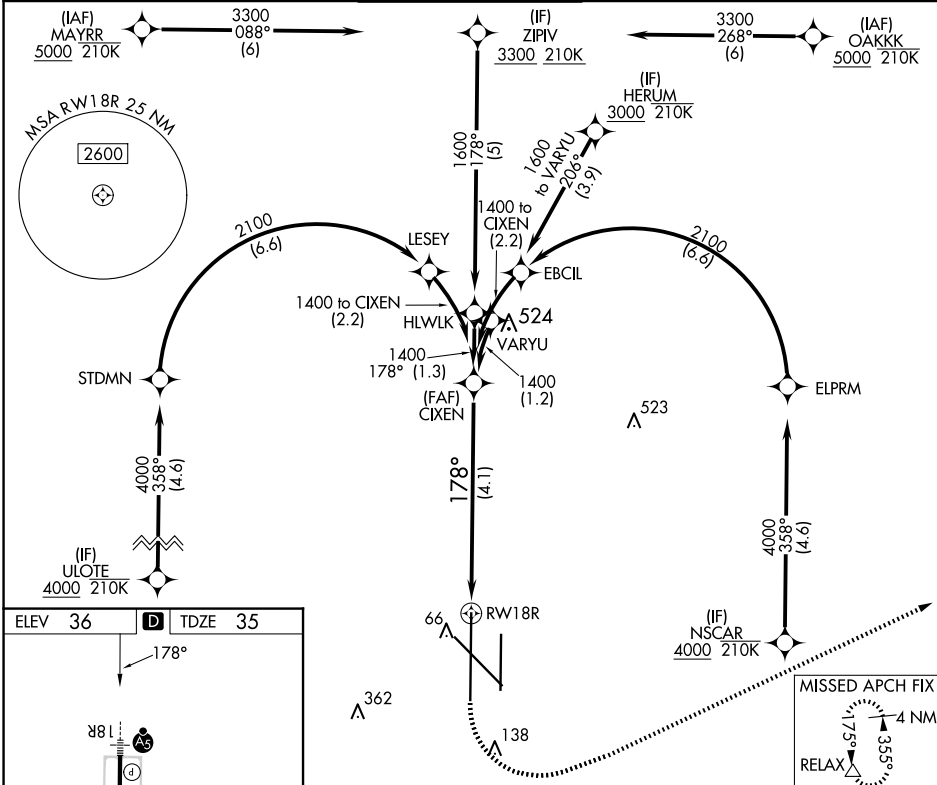
RNP AR APCH - GPS.

▼ For uncompensated Baro-VNAV systems, procedure NA below -1°C or above 54°C. When local altimeter setting not received, procedure NA. For inop ALS, increase RNP 0.11 all Cats visibility to RVR 4000 and RNP 0.30 all Cats visibility to RVR 4500.

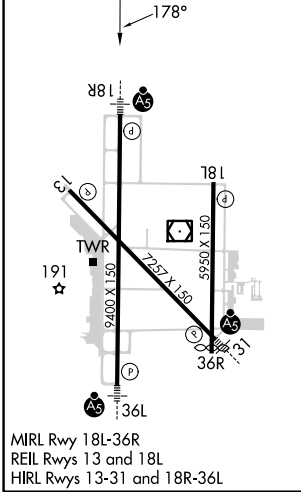


MISSED APPROACH: Climb to 500 then climbing left turn to 2000 direct RELAX and hold.

ATIS 124.85	VALLEY APP CON 120.7 279.5	HARLINGEN TOWER* 119.3 (CTAF) 0 317.6	GND CON 121.7	UNICOM 122.95
-----------------------	--------------------------------------	---	-------------------------	-------------------------

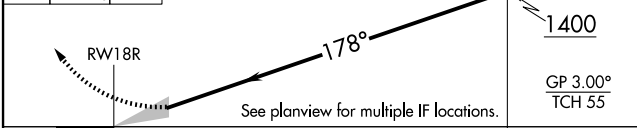


ELEV 36	D	TDZE 35
---------	----------	---------



MIRL Rwy 18L-36R
REIL Rwy 13 and 18L
HIRL Rwy 13-31 and 18R-36L

500 2000 RELAX VGSI and RNAV glidepath not coincident (VGSI Angle 3.00/TCH 71)



CATEGORY	A	B	C	D
RNP 0.11 DA		285/24	250 (300-½)	
RNP 0.30 DA		345/24	310 (400-½)	

AUTHORIZATION REQUIRED

SC-3, 20 FEB 2025 to 20 MAR 2025

SC-3, 20 FEB 2025 to 20 MAR 2025