

APP CRS	Rwy Idg	<b>7257</b>
<b>313°</b>	TDZE	<b>36</b>
	Apt Elev	<b>36</b>

# RNAV (RNP) Z RWY 31

VALLEY INTL (HRL)

RNP AR APCH - GPS.

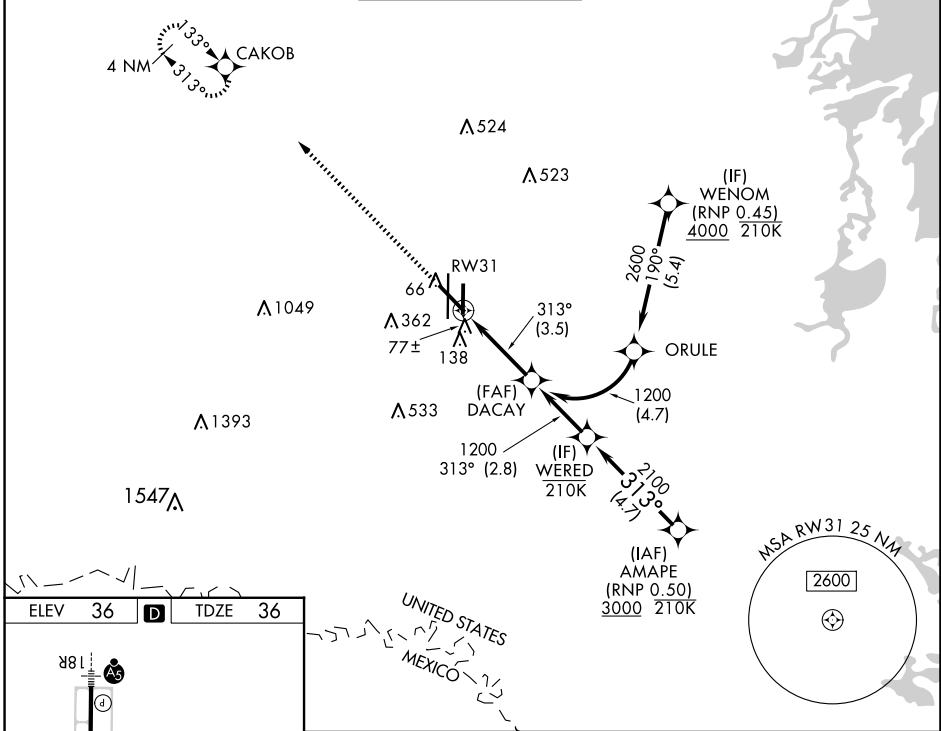
▼ For uncompensated Baro-VNAV systems, procedure NA below -1°C or above 54°C. For inop ALS, increase RNP 0.11 all Cats visibilities to ¾ SM and increase RNP 0.30 all Cats visibilities ⅞ SM. When local altimeter setting not received, procedure NA.

MALSR



MISSED APPROACH:  
Climb to 2000 direct  
CAKOB and hold.

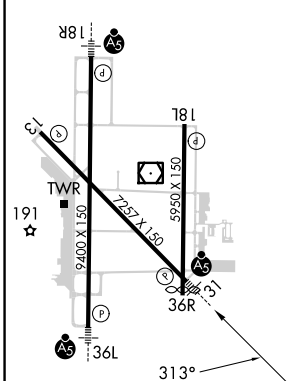
ATIS <b>124.85</b>	VALLEY APP CON <b>120.7 279.5</b>	HARLINGEN TOWER ★ <b>119.3(CTAF) 317.6</b>	GND CON <b>121.7</b>	UNICOM <b>122.95</b>
-----------------------	--------------------------------------	---	-------------------------	-------------------------



SC-3, 20 FEB 2025 to 20 MAR 2025

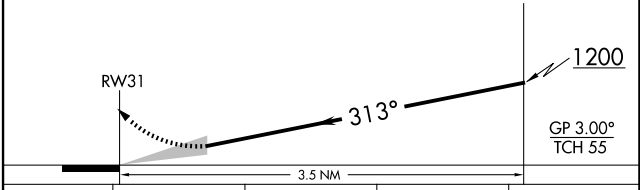
SC-3, 20 FEB 2025 to 20 MAR 2025

ELEV 36	<b>D</b>	TDZE 36
---------	----------	---------



MIRL Rwy 18L-36R  
REIL Rwys 13 and 18L  
HIRL Rwys 13-31 and 18R-36L

2000 CAKOB See Planview for multiple IF locations.



CATEGORY	A	B	C	D
RNP 0.11 DA		286-½	250 (300-½)	
RNP 0.30 DA		339-½	303 (400-½)	

## AUTHORIZATION REQUIRED