

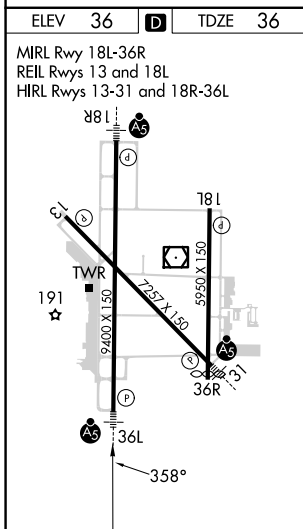
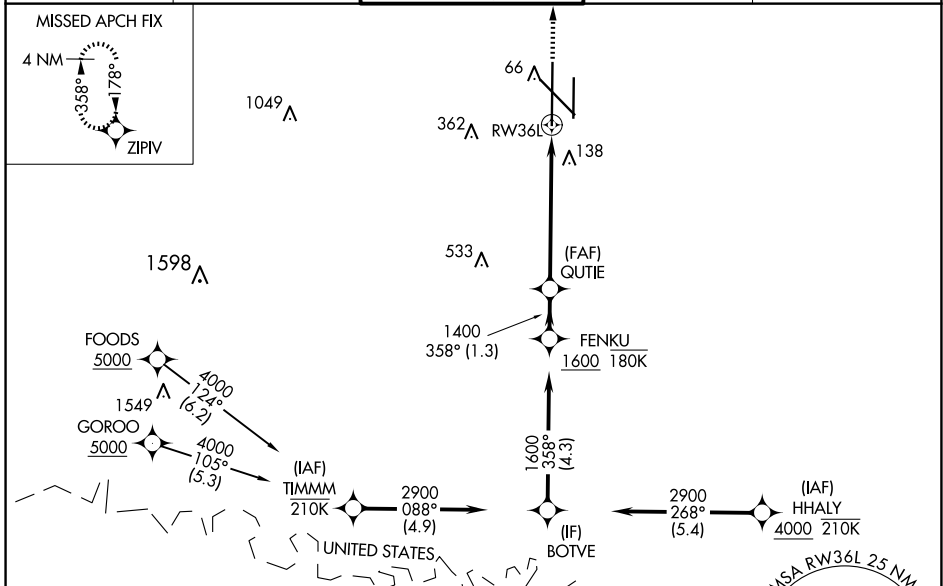
WAAS CH 86530 W36B	APP CRS 358°	Rwy Idg TDZE 36 Apt Elev 36	9400
--	------------------------	---	-------------

RNAV (GPS) Y RWY 36L

VALLEY INTL (H.R.L.)

RNP APCH - GPS.	MALS R	MISSED APPROACH: Climb to 2000 direct ZIPIV and hold.
<p>▼ For uncompensated Baro-VNAV systems, LNAV/VNAV NA below -1°C or above 54°C.</p> <p>▲ Baro-VNAV and VDP NA when using Port Isabel altimeter setting. When local altimeter setting not received, use Port Isabel altimeter setting and increase LPV DA to 278 feet; increase LNAV/VNAV DA to 447 feet and all visibilities ½ SM. Increase all MDAs 60 feet, and LNAV visibility Cat C and D ¼ SM; and Circling visibility Cats C and D ¼ SM.</p>		

ATIS 124.85	VALLEY APP CON 120.7 279.5	HARLINGEN TOWER ★ 119.3(CTAF) 317.6	GND CON 121.7	UNICOM 122.95
-----------------------	--------------------------------------	---	-------------------------	-------------------------



ELEV 36	TDZE 36			
MIRL Rwy 18L-36R	REIL Rwy 13 and 18L			
HIRL Rwy 13-31 and 18R-36L				
2000	ZIPIV	VGSI and RNAV glidepath not coincident (VGSI Angle 3.00/TCH 74).	FENKU	
↑	◆		◆	
1.3 NM	1.3 NM	2.8 NM	1.3 NM	
1400	1400	1400	1600	
358°	358°	358°	358°	
GP 3.00°	TCH 55			
CATEGORY	A	B	C	D
LPV DA	236-¾		200 (200-¾)	
LNAV/VNAV DA	405-1		369 (400-1)	
LNAV MDA	500-1	464 (500-1)	500-1¾	464 (500-1¾)
CIRCLING	500-1 464 (500-1)	560-1 524 (600-1)	600-1½ 564 (600-1½)	680-2 644 (700-2)

SC-3, 20 FEB 2025 to 20 MAR 2025

SC-3, 20 FEB 2025 to 20 MAR 2025