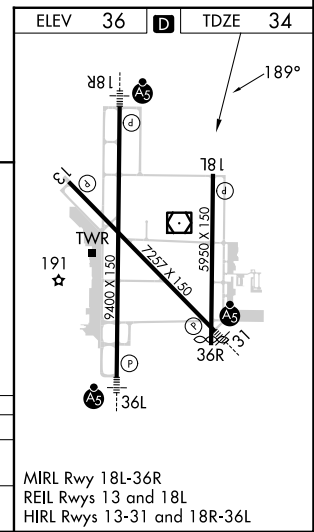
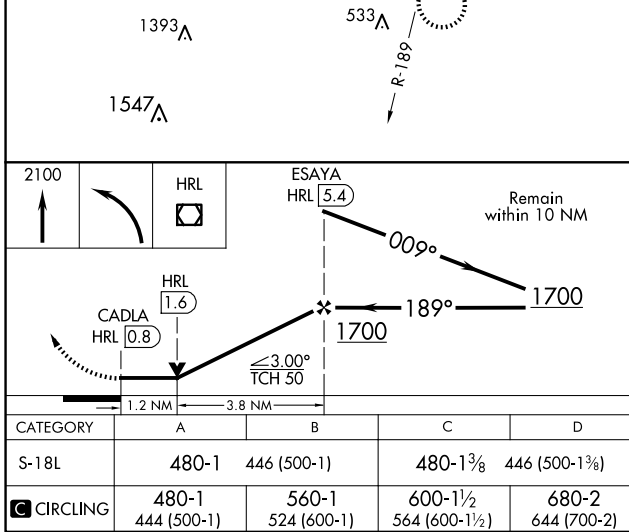
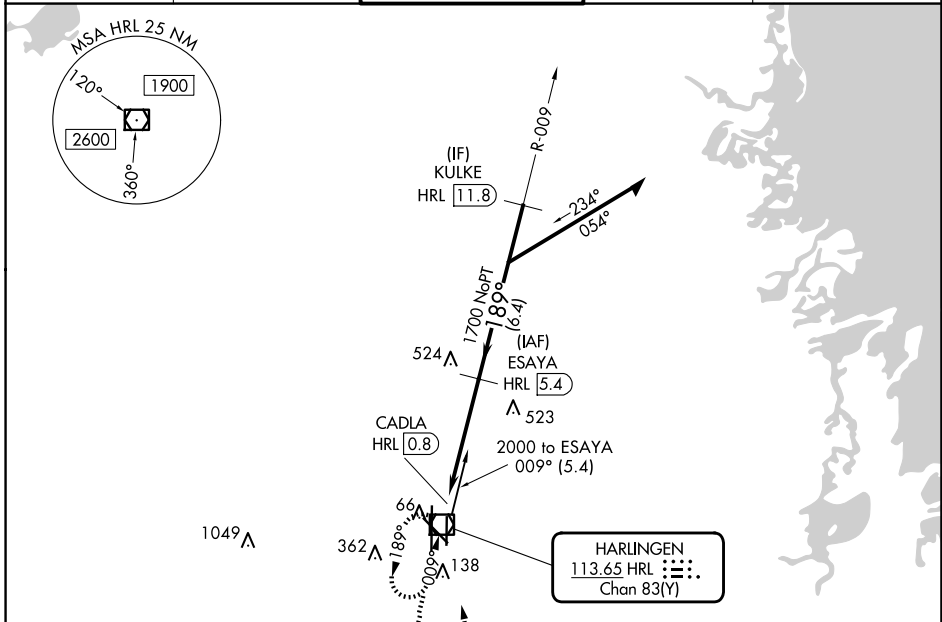


VOR/DME HRL	APP CRS	Rwy Idg 5949
113.65	189°	TDZE 36
Chan 83 (Y)		Apt Elev 36

VOR RWY 18L

VALLEY INTL (HRL)

DME required. RADAR required for procedure entry at KULKE.		MISSED APPROACH: Climb to 2100 then left turn direct HRL VOR/DME and hold.	
ATIS 124.85	VALLEY APP CON 120.7 279.5	HARLINGEN TOWER ★ 119.3 (CTAF) 0 317.6	GND CON 121.7
			UNICOM 122.95



MIRL Rwy 18L-36R
REIL Rwy 13 and 18L
HIRL Rwy 13-31 and 18R-36L

SC-3, 20 FEB 2025 to 20 MAR 2025

SC-3, 20 FEB 2025 to 20 MAR 2025