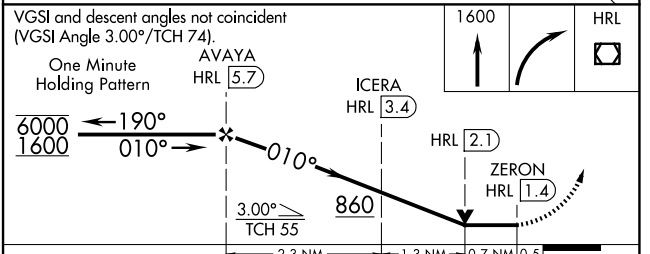
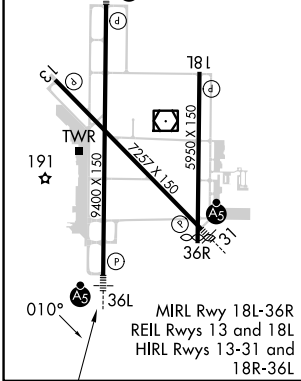
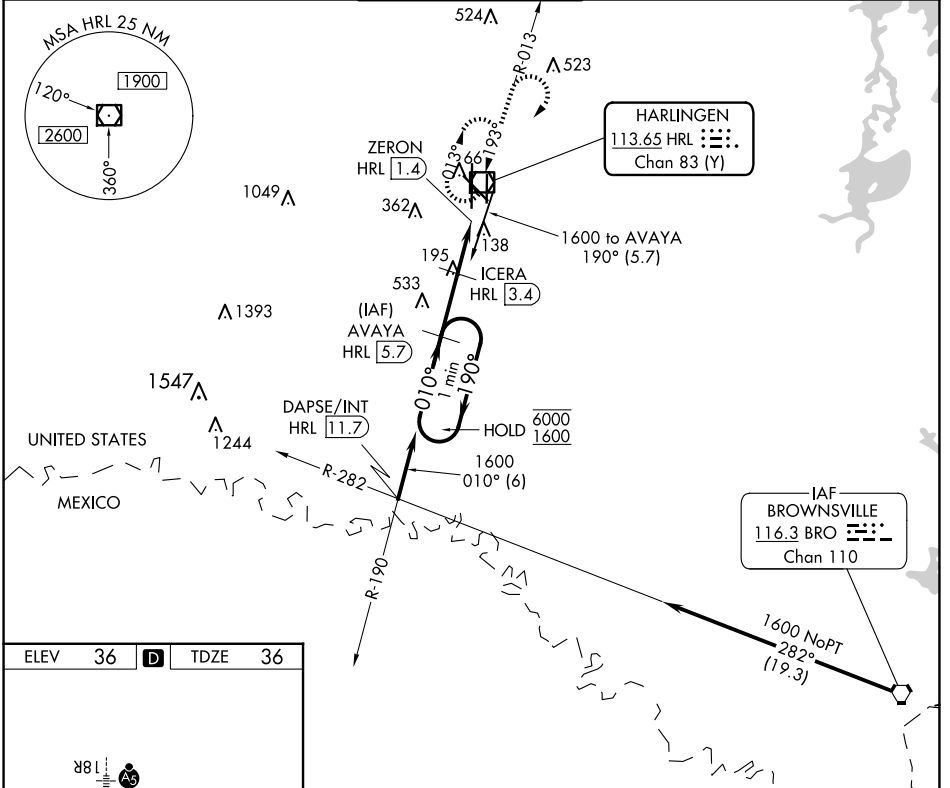


VOR/DME HRL <b>113.65</b> Chan <b>83 (Y)</b>	APP CRS <b>010°</b>	Rwy Idg TDZE Apt Elev	<b>9400</b> <b>36</b> <b>36</b>
--	------------------------	-----------------------------	---------------------------------------

# VOR RWY 36L

VALLEY INTL (H.R.L.)

DME required.		MALSR	MISSED APPROACH: Climb to 1600 then right turn direct HRL VOR/DME and hold.
ATIS <b>124.85</b>	VALLEY APP CON <b>120.7 279.5</b>	HARLINGEN TOWER ★ <b>119.3 (CTAF) 317.6</b>	GND CON <b>121.7</b>
		UNICOM <b>122.95</b>	



CATEGORY	A	B	C	D
S-36L	460-1	424 (500-1)	460-1¼	424 (500-1¼)
<input checked="" type="checkbox"/> CIRCLING	460-1 424 (500-1)	560-1 524 (600-1)	600-1½ 564 (600-1½)	680-2 644 (700-2)

SC-3, 20 FEB 2025 to 20 MAR 2025

SC-3, 20 FEB 2025 to 20 MAR 2025