

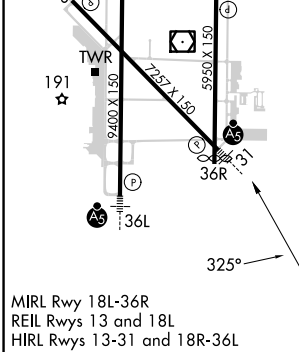
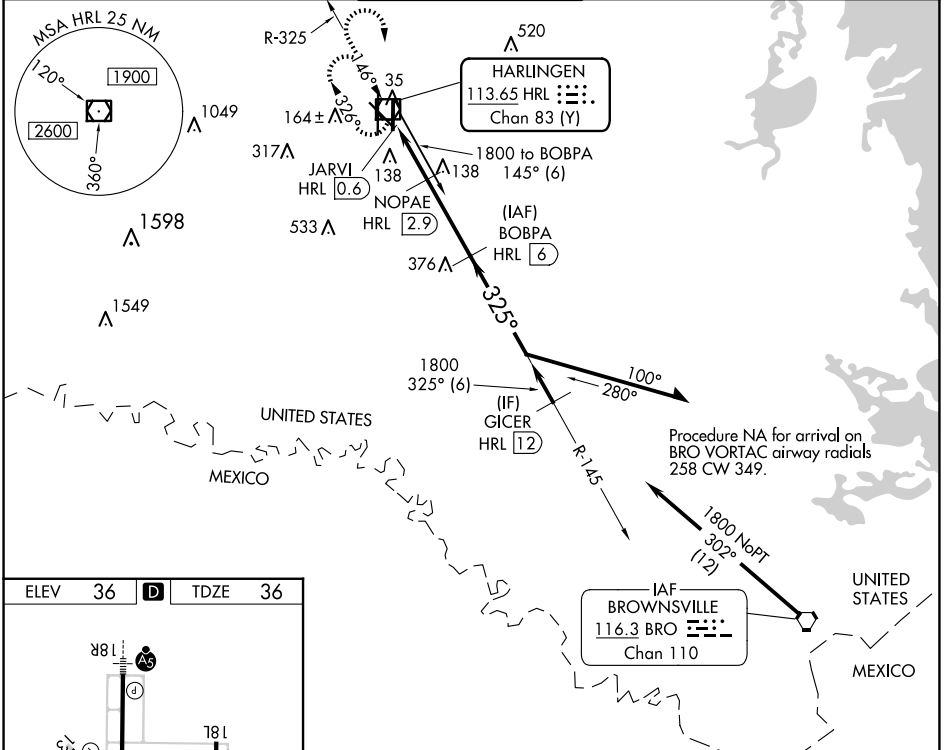
VOR/DME HRL	APP CRS	Rwy Idg	7257
113.65	325°	TDZE	36
Chan 83 (Y)		Apt Elev	36

VOR Z RWY 31

VALLEY INTL (H.R.L.)

DME required.	MALSR	MISSED APPROACH: Climb to 1000 then climbing right turn to 2100 direct HRL VOR/DME and hold, continue climb and hold to 2100.
<p>▽ VDP NA when using Port Isabel altimeter setting. When local altimeter setting not received, use Port Isabel altimeter setting and increase all MDAs 60 feet and S-31 visibility Cat C/D 1/8 SM, and Circling visibility Cat C/D 1/4 SM. For inop ALS, increase S-31 Cats C/D visibilities to 1/8 SM.</p>		

ATIS 124.85	VALLEY APP CON 120.7 279.5	HARLINGEN TOWER ★ 119.3 (CTAF) 317.6	GND CON 121.7	UNICOM 122.95
-----------------------	--------------------------------------	--	-------------------------	-------------------------



1000 2100 HRL NOPAE HRL 2.9 JARVI HRL 0.6 HRL 1.7 800 1800 1800 145° 325° 3.00° TCH 55 1 NM 1.2 NM 3.1 NM	BOBPA HRL 6				Remain within 10 NM
	CATEGORY S-31 CIRCLING	A 420-1/2 424 (500-1)	B 384 (400-1/2) 560-1 524 (600-1)	C 420-3/4 564 (600-1/2)	