

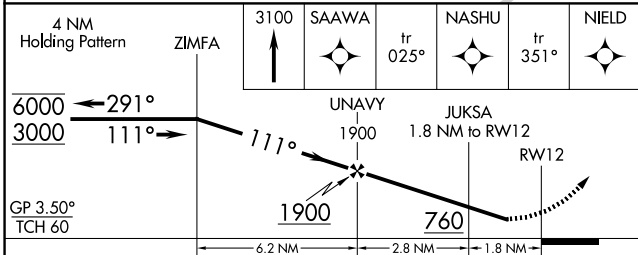
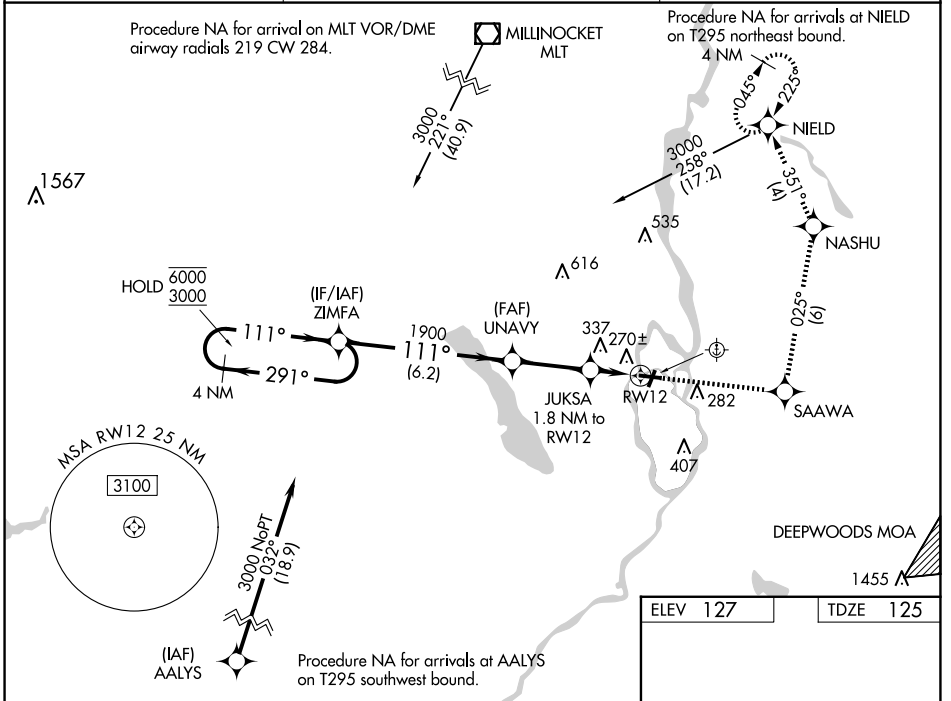
WAAS CH 42647 W12A	APP CRS 111°	Rwy Idg TDZE Apt Elev	4001 125 127
---------------------------------	------------------------	-----------------------------	---

RNAV (GPS) RWY 12

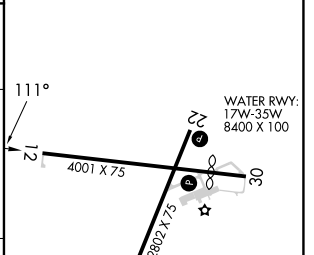
DEWITT FLD/OLD TOWN MUNI (OLD)

RNP APCH - GPS.	<p>▽ Rwy 12 helicopter visibility reduction below 3/4 SM NA. Circling NA to Rwy 17W and 35W. Circling Rwy 4 NA at night. Use BGR altimeter setting; when not received, use BHB altimeter setting and increase LPV DA to 497 feet; increase all MDAs 60 feet and LNAV visibility Cat C 1/2 SM, and Circling visibility Cat C 1/2 SM.</p>	<p>MISSED APPROACH: Climb to 3100 direct SAAWA and on track 025° to NASHU and on track 351° to NIELD and hold, continue climb-in-hold to 3100.</p>
-----------------	--	--

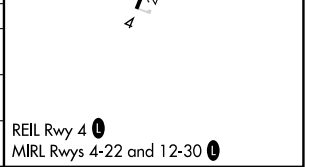
BGR ASOS 127.75	BANGOR APP CON 118.925 239.3	UNICOM 122.8 (CTAF)
---------------------------	--	-------------------------------



ELEV 127	TDZE 125
----------	----------



CATEGORY	A	B	C	D
LPV DA	449-1 324 (400-1)			NA
LNAV MDA	560-1	435 (500-1)	560-1 1/4 435 (500-1 1/4)	NA
C CIRCLING	640-1 513 (600-1)	700-1 573 (600-1)	760-1 1/4 633 (700-1 1/4)	NA



NE-1, 20 FEB 2025 to 20 MAR 2025

NE-1, 20 FEB 2025 to 20 MAR 2025