

WAAS CH 78434 W12A	APP CRS 121°	Rwy Idg TDZE Apt Elev	3998 2209 2209
---------------------------------	------------------------	-----------------------------	---

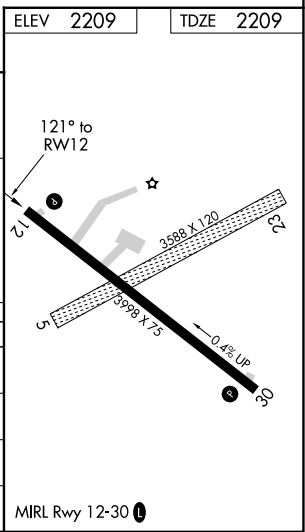
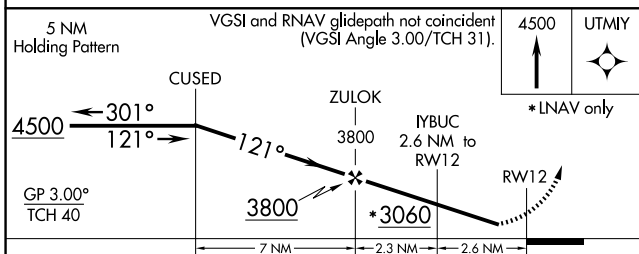
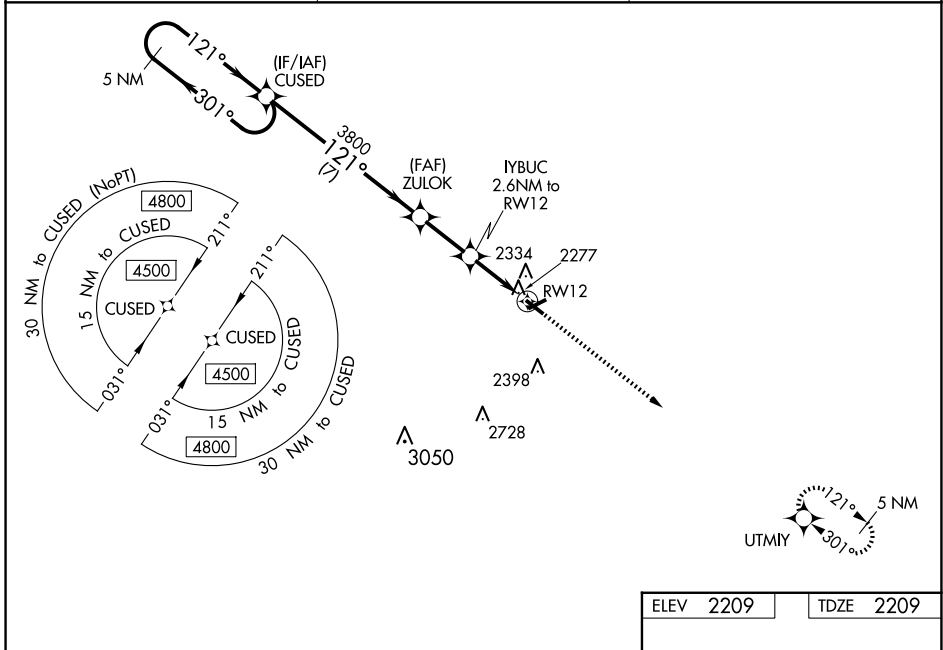
RNAV (GPS) RWY 12

PHILIP (PHP)

⚠ DME/DME RNP-0.3 NA. When local altimeter setting not received, use Pierre altimeter setting and increase all DA 204 feet and MDA 220 feet and increase LPV and LNAV/VNAV all Cats visibility $\frac{3}{8}$ mile, increase LNAV Cat C visibility $\frac{1}{2}$ mile, and increase Circling Cat C visibility $\frac{3}{4}$ mile. Helicopter visibility reduction below 1 SM NA. Procedure NA at night. For uncompensated Baro-VNAV systems, LNAV/VNAV NA below -14°C (7°F) or above 54°C (130°F). Baro-VNAV NA when using Pierre altimeter setting.

⚠ MISSED APPROACH: Climb to 4500 direct UTMJY and hold.

ASOS 118.375	DENVER CENTER 127.95 338.2	UNICOM 122.8 (CTAF)
------------------------	--------------------------------------	-------------------------------



CATEGORY	A	B	C	D
LPV DA	2467-1 258 (300-1)			NA
LNAV/VNAV DA	2742-1 $\frac{7}{8}$ 533 (600-1 $\frac{7}{8}$)			NA
LNAV MDA	2680-1 471 (500-1)		2680-1 $\frac{3}{8}$ 471 (500-1 $\frac{3}{8}$)	NA
C CIRCLING	2720-1 511 (600-1)	2760-1 551 (600-1)	2840-1 $\frac{3}{4}$ 631 (700-1 $\frac{3}{4}$)	NA

NC-1, 20 FEB 2025 to 20 MAR 2025

NC-1, 20 FEB 2025 to 20 MAR 2025