

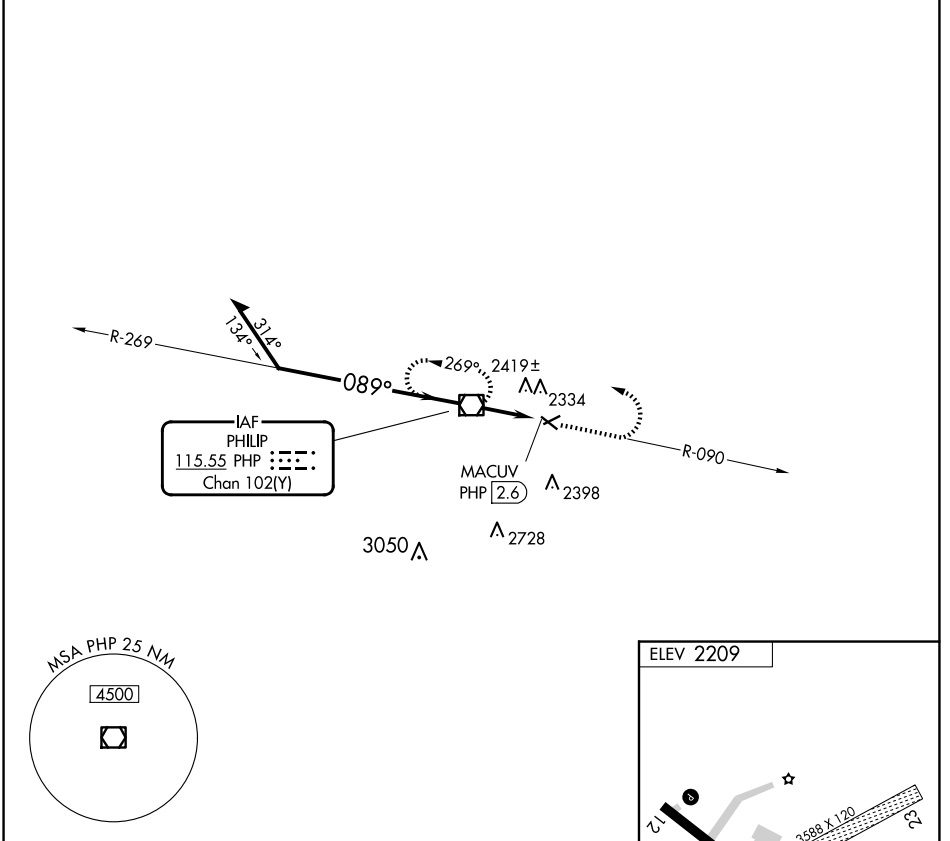
VOR/DME PHP <b>115.55</b> Chan <b>102(Y)</b>	APP CRS <b>089°</b>	Rwy Idg TDZE Apt Elev <b>N/A</b> <b>N/A</b> <b>2209</b>
--	------------------------	--

# VOR-A PHILIP (PHP)

**⚠** Circling to Rwy 12-30 NA at night. When local altimeter setting not received, use Pierre Rgnl altimeter setting and increase all MDA 220 feet, and increase Circling Cat C visibility 3/4 mile.

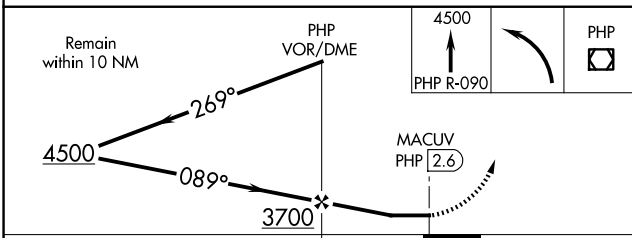
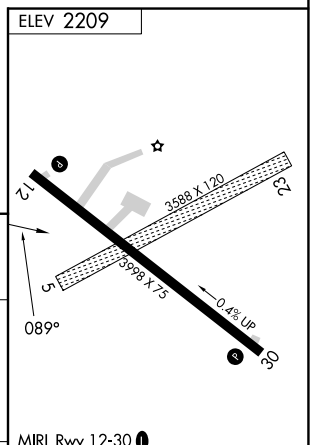
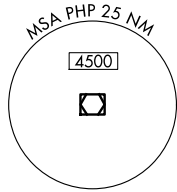
**⚠** MISSED APPROACH: Climb to 4500 on PHP VOR/DME R-090, then left turn direct PHP VOR/DME and hold.

ASOS <b>118.375</b>	DENVER CENTER <b>127.95 338.2</b>	UNICOM <b>122.8 (CTAF)</b> <b>0</b>
------------------------	--------------------------------------	--



NC-1, 20 FEB 2025 to 20 MAR 2025

NC-1, 20 FEB 2025 to 20 MAR 2025



CATEGORY	FAF to MAP 2.6 NM			
	A	B	C	D
<b>0</b> CIRCLING	2720-1 511 (600-1)	2760-1 551 (600-1)	2840-1 3/4 631 (700-1 3/4)	NA
	Knots 60	90	120	150
	Min:Sec 2:36	1:44	1:18	1:02
		180	0:52	