

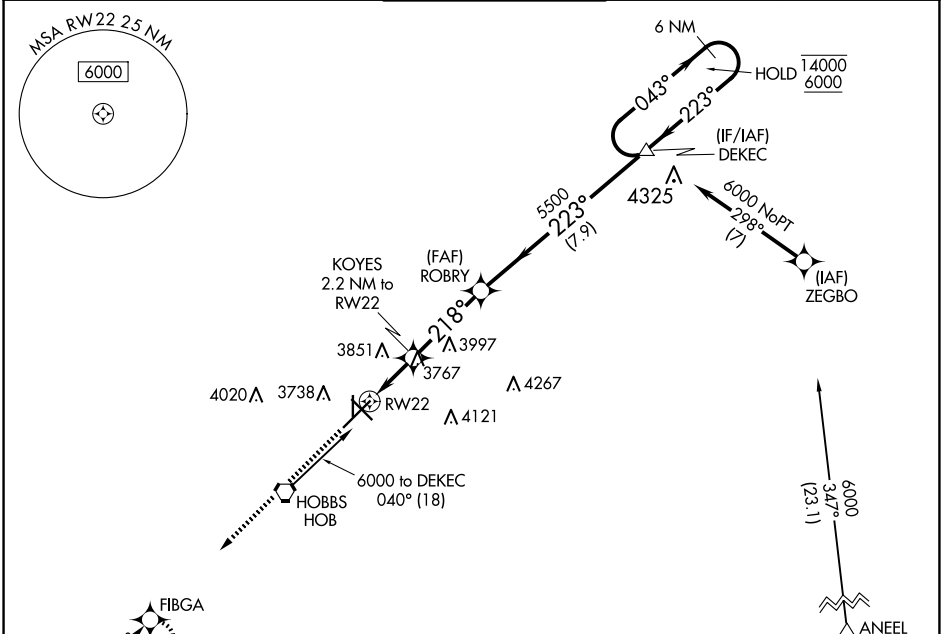
WAAS CH 82735 W22A	APP CRS 218°	Rwy Idg TDZE Apt Elev	8000 3649 3661
----------------------------------------	------------------------	-----------------------------	-------------------------------------------

RNAV (GPS) RWY 22

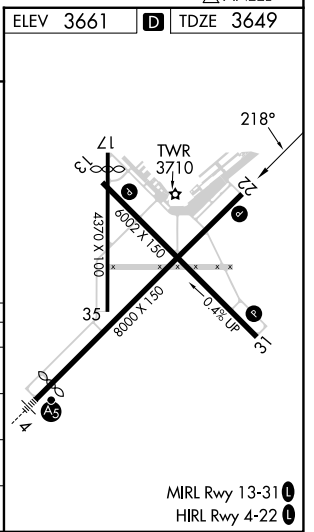
LEA COUNTY RGNL (HOB)

RNP APCH - GPS.		MISSED APPROACH: Climb to 5600 direct FIBGA and hold.	
<p>⚠ Circling Rwy 17, 35 NA at night. For uncompensated Baro-VNAV systems, LNAV/VNAV NA below -12°C or above 54°C.</p>			

ATIS 119.75	FORT WORTH CENTER 133.1 298.95	HOBBS TOWER ★ 120.65 (CTAF) 317.4	GND CON 121.9	UNICOM 122.95
-----------------------	------------------------------------------	---------------------------------------------	-------------------------	-------------------------



ELEV 3661	TDZE 3649			
↑ FIBGA	6000 Holding Pattern			
KOYES 2.2 NM to RW22	5500			
1 NM to RW22	223°			
RW22	218°			
4400	5500			
GP 3.00°	TCH 44			
1 NM	1.2 NM			
3.5 NM	7.9 NM			
CATEGORY	A	B	C	D
LPV DA		3899-3/4	250 (300-3/4)	
LNAV/VNAV DA		3899-3/4	250 (300-3/4)	
LNAV MDA		4020-1	371 (400-1)	
CIRCLING	4120-1	4160-1	4440-2 1/4	4440-2 1/2
	459 (500-1)	499 (500-1)	779 (800-2 1/4)	779 (800-2 1/2)



SW-1, 20 FEB 2025 to 20 MAR 2025

SW-1, 20 FEB 2025 to 20 MAR 2025