

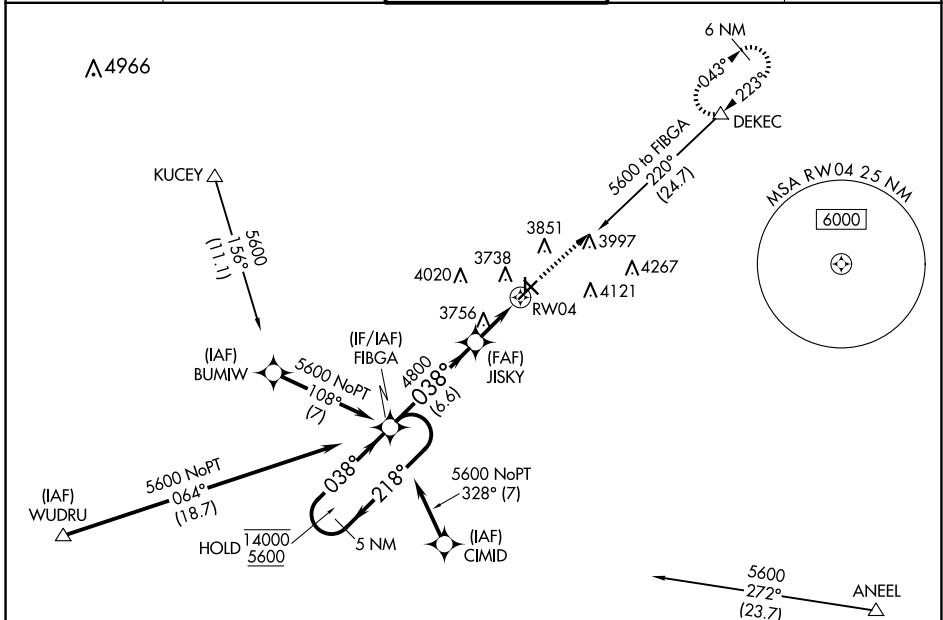
WAAS CH 90215 W04A	APP CRS 038°	Rwy Idg TDZE Apt Elev	7398 3652 3661
--	------------------------	-----------------------------	---

RNAV (GPS) RWY 4

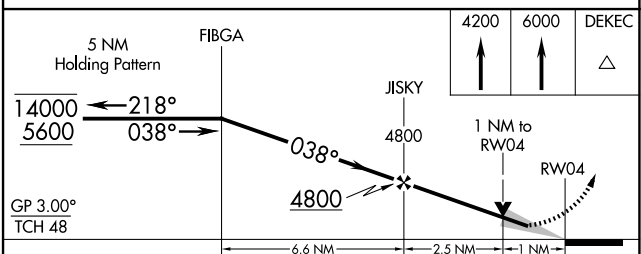
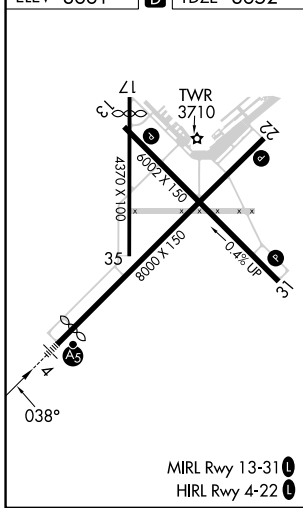
LEA COUNTY RGNL (HOB)

RNP APCH - GPS.		MALSR	MISSED APPROACH: Climb to 4200 then climb to 6000 direct DEKEC and hold.	
<p>⚠ Circling Rwy 17, 35 NA at night. For uncompensated Baro-VNAV systems, LNAV/VNAV NA below -12°C or above 54°C. For inop ALS increase LNAV/VNAV all Cats visibility to 3/4 SM and LNAV Cats C/D visibility to 1 SM.</p>				

ATIS 119.75	FORT WORTH CENTER 133.1 298.95	HOBBBS TOWER ★ 120.65 (CTAF) 0 317.4	GND CON 121.9	UNICOM 122.95
-----------------------	--	--	-------------------------	-------------------------



ELEV 3661	D	TDZE 3652
-----------	----------	-----------



CATEGORY	A	B	C	D
LPV DA	3852-1/2		200 (200-1/2)	
LNAV/VNAV DA	3902-1/2		250 (300-1/2)	
LNAV MDA	4020-1/2 368 (400-1/2)		4020-5/8 368 (400-5/8)	
C CIRCLING	4120-1 459 (500-1)	4160-1 499 (500-1)	4440-2 1/4 779 (800-2 1/4)	4440-2 1/2 779 (800-2 1/2)

SW-1, 20 FEB 2025 to 20 MAR 2025

SW-1, 20 FEB 2025 to 20 MAR 2025