

LOC/DME I-HCV 110.3 Chan 40	APP CRS 052°	Rwy Idg 6215 TDZE 947 Apt Elev 947
---	------------------------	---

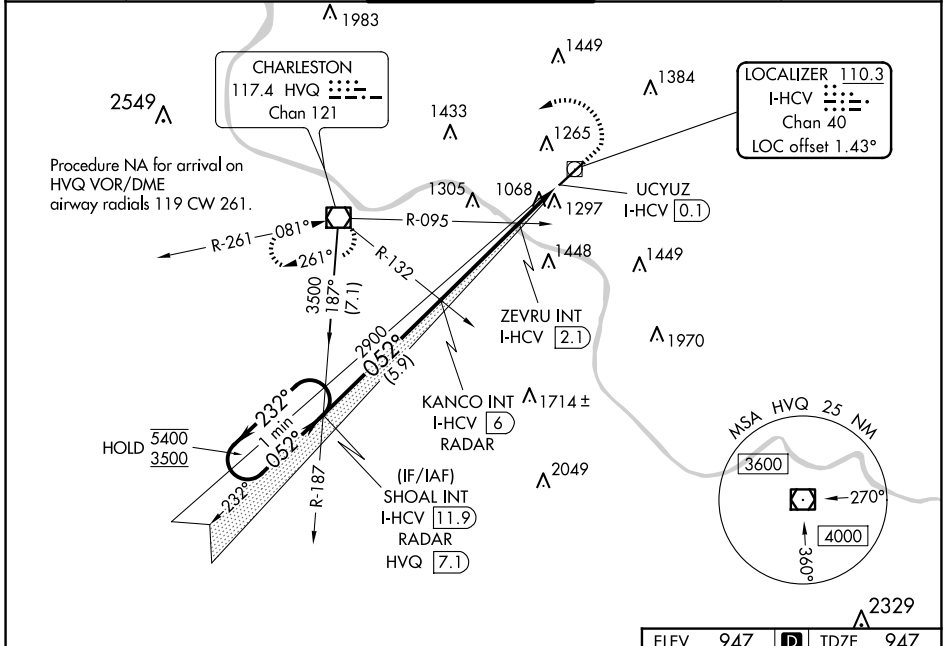
ILS or LOC RWY 5

WEST VIRGINIA INTL YEAGER (CRW)

Autopilot coupled approach NA below 1300.

MISSED APPROACH: Climb to 1800 then climbing left turn to 3500 direct HVQ VOR/DME and hold.

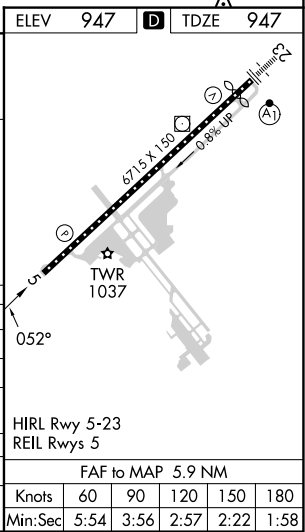
ATIS 127.6	CHARLESTON APP CON 124.1 269.125	CHARLESTON TOWER 125.7 257.8	GND CON 121.8 348.6	CLNC DEL 118.55
----------------------	--	--	-------------------------------	---------------------------



NE-4, 20 FEB 2025 to 20 MAR 2025

NE-4, 20 FEB 2025 to 20 MAR 2025

One Minute Holding Pattern	SHOAL INT I-HCV [11.9] RADAR	KANCO INT I-HCV [6] RADAR	ZEVRU INT I-HCV [2.1]	I-HCV DME ANTENNA	UCYUZ I-HCV [0.1]	I-HCV [1.1]
5400 ← 232°	3500 → 052°	2900	1640	1800	3500	HVQ
GS 3.00° TCH 56	5.9 NM	3.9 NM	1 NM	1 NM	0.1	
CATEGORY	A	B	C	D		
S-ILS 5	1197/40		250 (300-¾)			
S-LOC 5	1640/55	693 (700-1)	1640-2	693 (700-2)		
C CIRCLING	1640-1	693 (700-1)	1760-2½ 813 (900-2½)	1880-3 933 (1000-3)		
ZEVRU FIX MINIMUMS (DUAL VOR RECEIVERS OR DME REQUIRED)						
S-LOC 5	1320/55		373 (400-1)			
C CIRCLING	1600-1	653 (700-1)	1760-2½ 813 (900-2½)	1880-3 933 (1000-3)		



FAF to MAP 5.9 NM					
Knots	60	90	120	150	180
Min:Sec	5:54	3:56	2:57	2:22	1:58