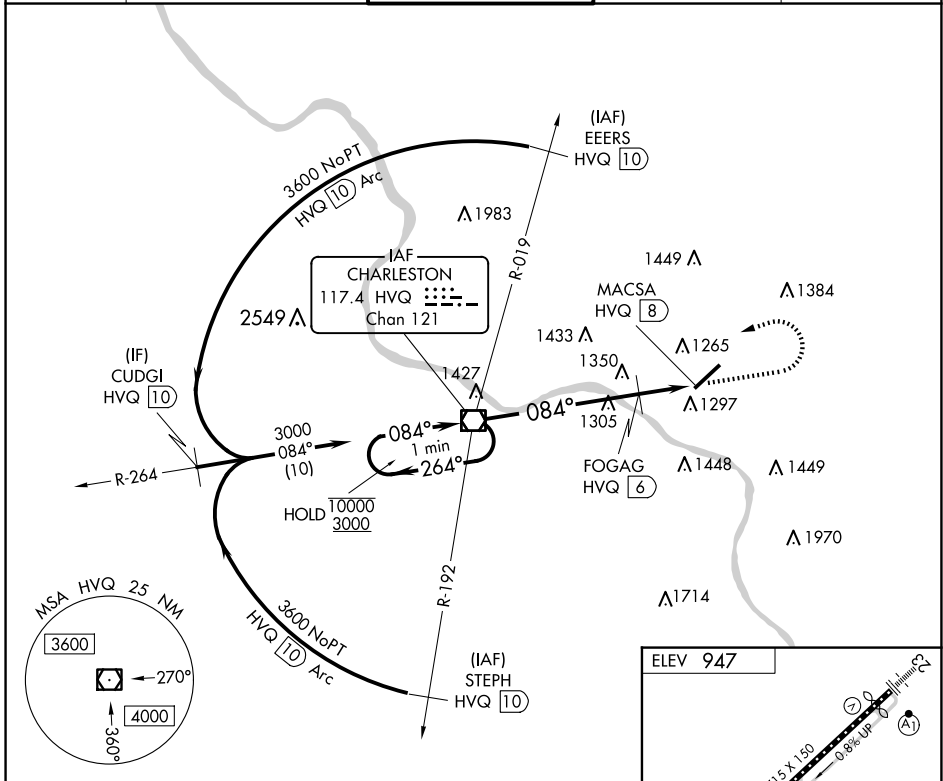


VOR/DME HVQ 117.4 Chan 121	APP CRS 084°	Rwy Idg TDZE Apt Elev 947	N/A N/A 947
--	------------------------	---	--

VOR-A
WEST VIRGINIA INTL YEAGER (CRW)

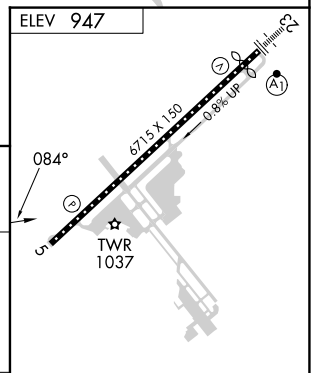
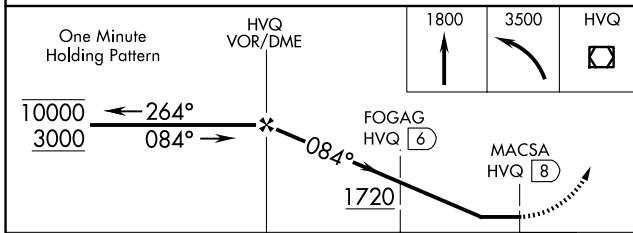
MISSSED APPROACH: Climb to 1800 then climbing left turn to 3500 direct HVQ VOR/DME and hold.

ATIS 127.6	CHARLESTON APP CON 124.1 269.125	CHARLESTON TOWER 125.7 257.8	GND CON 121.8 348.6	CLNC DEL 118.55
----------------------	--	--	-------------------------------	---------------------------



NE-4, 20 FEB 2025 to 20 MAR 2025

NE-4, 20 FEB 2025 to 20 MAR 2025



One Minute Holding Pattern	1800	3500	HVQ	
10000 ← 264°	↑	↙	☐	
3000 → 084°				
	FOGAG HVQ 6	MACSA HVQ 8		
	6 NM	2 NM		
CATEGORY	A	B	C	D
CIRCLING	1720-1 773 (800-1)		1760-2½ 813 (900-2½)	1880-3 933 (1000-3)
FOGAG FIX MINIMUMS (DME REQUIRED)				
CIRCLING	1600-1 653 (700-1)		1760-2½ 813 (900-2½)	1880-3 933 (1000-3)

HIRL Rwy 5-23	FAF to MAP 8 NM					
REIL Rwy 5	Knots	60	90	120	150	180
	Min:Sec	8:00	5:20	4:00	3:12	2:40