

VOR/DME OTB 109.8 Chan 35	APP CRS 196°	Rwy Idg 7150 TDZE 344 Apt Elev 347
---	------------------------	---

VOR RWY 18

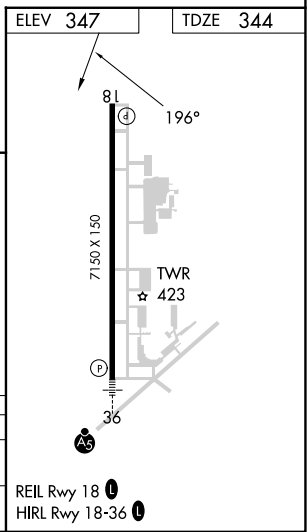
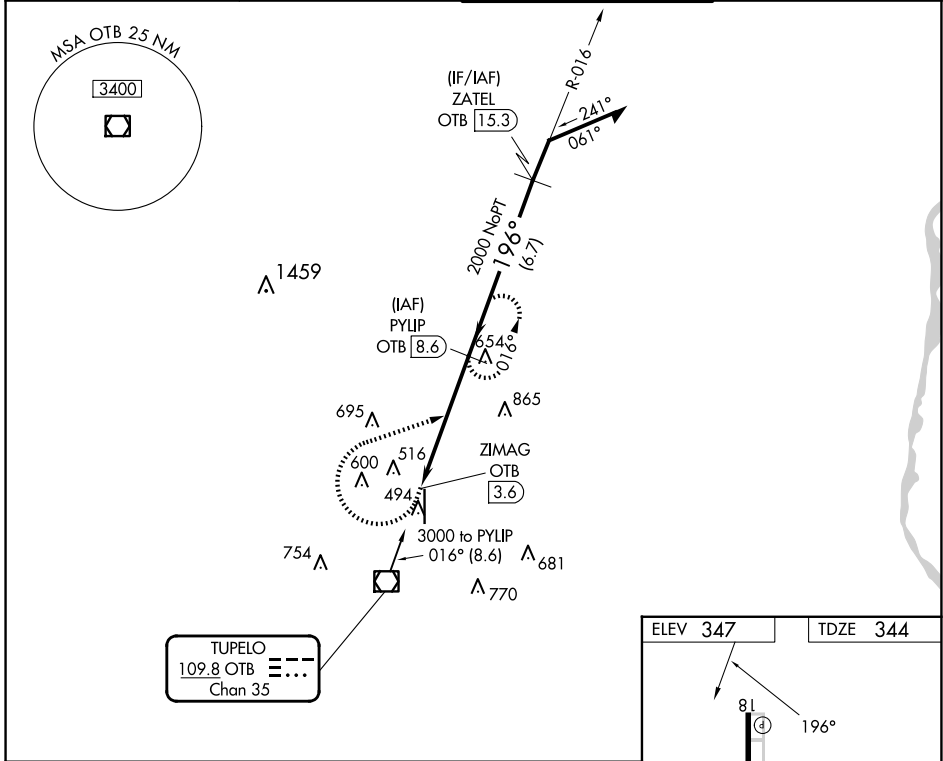
TUPELO RGNL (TUP)

RADAR required for procedure entry. DME required.

⚠ When local altimeter setting not received, use Columbus AFB altimeter setting and increase all MDA 120 feet. Increase S-18 Cat C/D visibility $\frac{3}{8}$ SM; increase Circling Cat C/D visibility $\frac{1}{2}$ SM. VDP NA when using Columbus AFB altimeter setting.

MISSED APPROACH: Climb to 1500 then climbing right turn to 3000 on OTB VOR/DME R-016 to PYLIP/OTB 8.6 DME and hold.

ASOS 133.525	MEMPHIS CENTER 128.5 279.55	TUPELO TOWER ★ 118.775 (CTAF) 0 254.275	GND CON 121.825 254.275
------------------------	---------------------------------------	---	-----------------------------------



CATEGORY	A	B	C	D
S-18	780-1 436 (500-1)		780-1¼ 436 (500-1¼)	
CIRCLING	820-1 473 (500-1)		900-1½ 553 (600-1½)	1140-2½ 793 (800-2½)

SC-4, 20 FEB 2025 to 20 MAR 2025

SC-4, 20 FEB 2025 to 20 MAR 2025