

WAAS CH 93904 W17A	APP CRS 167°	Rwy Idg TDZE 1864 Apt Elev 1864	5000
--	------------------------	---	-------------

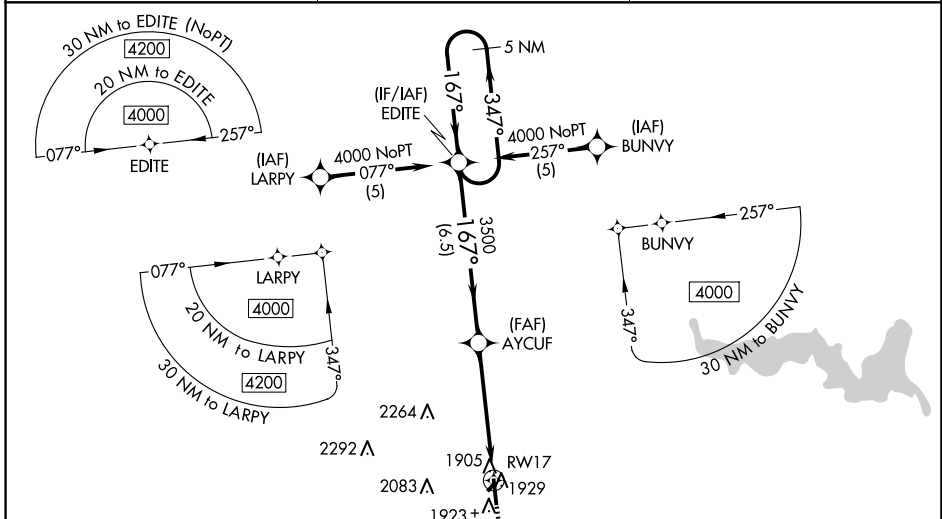
RNAV (GPS) RWY 17

RUSSELL MUNI (RSL)

⚠ Baro-VNAV and VDP NA when using Hays altimeter setting. For uncompensated Baro-VNAV systems, LNAV/VNAV NA below -18°C (0°F) or above 54°C (130°F). DME/DME RNP-0.3 NA. Helicopter visibility reduction below ¼ SM NA. When local altimeter setting not received, use Hays altimeter setting: increase LPV DA all Cats to 2186 feet, LNAV/VNAV all Cats DA to 2244 feet and all visibilities ¼ SM; increase all MDA 80 feet and LNAV Cat C and Circling Cat C visibility ¼ SM. Circling NA to Rwys 3 and 21.

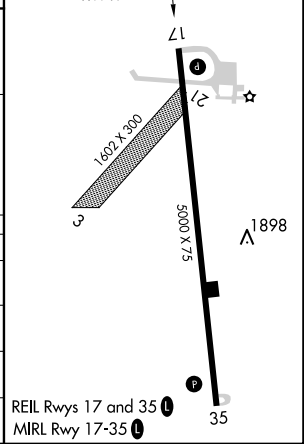
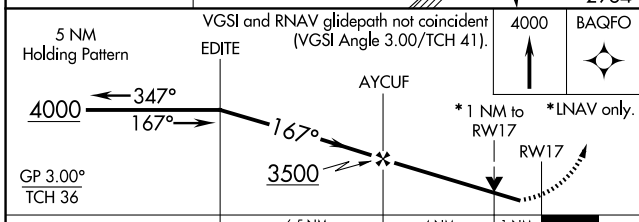
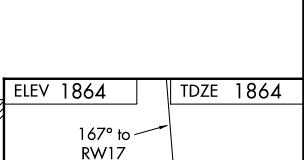
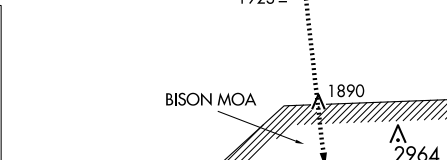
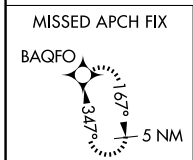
MISSED APPROACH:
Climb to 4000 direct
BAQFO and hold.

ASOS 128.325	KANSAS CITY CENTER 124.4 322.4	UNICOM 122.7 (CTAF) 0
------------------------	--	---------------------------------



NC-2, 20 FEB 2025 to 20 MAR 2025

NC-2, 20 FEB 2025 to 20 MAR 2025



CATEGORY	A	B	C	D
LPV DA	2117-1	253 (300-1)		NA
LNAV/VNAV DA	2175-1 1/8	311 (400-1 1/8)		NA
LNAV MDA	2220-1	356 (400-1)		NA
CIRCLING	2240-1 376 (400-1)	2320-1 456 (500-1)	2620-2 1/4 756 (800-2 1/4)	NA