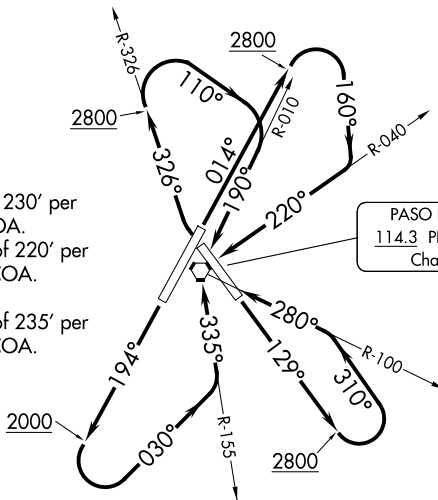


OAKLAND CENTER  
128.7 307.0

**TAKEOFF MINIMUMS**

- Rwy 1: Standard with minimum climb of 230' per NM to 2200, or 1500-3 for VCOA.
- Rwy 13: Standard with minimum climb of 220' per NM to 1700, or 1500-3 for VCOA.
- Rwy 19: Standard.
- Rwy 31: Standard with minimum climb of 235' per NM to 2200, or 1500-3 for VCOA.



**TAKEOFF OBSTACLE NOTES**

- Rwy 1: Lighting 9' from DER, 115' right of centerline, 804' MSL.  
Lighting 10' from DER, 113' left of centerline, 805' MSL.  
Tree 301' from DER, 425' left of centerline, 812' MSL.
- Rwy 13: Pole 34' from DER, 29' left of centerline, 840' MSL.  
Trees, pole beginning 766' from DER, 395' left of centerline, up to 900' MSL.  
Trees beginning 1656' from DER, 389' left of centerline, up to 906' MSL.  
Trees beginning 1746' from DER, 13' left of centerline, up to 910' MSL.  
Tree 1948' from DER, 1' right of centerline, 907' MSL.  
Trees beginning 2045' from DER, 56' left of centerline, up to 911' MSL.  
Trees beginning 2256' from DER, 409' left of centerline, up to 915' MSL.  
Tree 2581' from DER, 511' left of centerline, 917' MSL.  
Trees beginning 2601' from DER, 635' left of centerline, up to 923' MSL.  
Tree 3261' from DER, 856' left of centerline, 932' MSL.  
Tree 3860' from DER, 952' left of centerline, 944' MSL.  
Tree 3961' from DER, 784' left of centerline, 950' MSL.
- Rwy 19: Pole 10' from DER, 39' left of centerline, 815' MSL.  
Tree 992' from DER, 705' left of centerline, 851' MSL.  
Trees beginning 1098' from DER, 618' left of centerline, up to 876' MSL.
- Rwy 31: Wind indicator 78' from DER, 334' right of centerline, 823' MSL.

NOTE: Chart not to scale.

**DEPARTURE ROUTE DESCRIPTION**

**TAKEOFF RUNWAY 1:** Climb on heading 014° to 2800 then climbing right turn heading 160° to intercept PRB VORTAC R-040 to PRB VORTAC before proceeding on course.

**TAKEOFF RUNWAY 13:** Climb on heading 129° to 2800 then climbing left turn heading 310° to intercept PRB VORTAC R-100 to PRB VORTAC before proceeding on course.

**TAKEOFF RUNWAY 19:** Climb on heading 194° to 2000 then climbing left turn heading 030° to intercept PRB VORTAC R-155 to PRB VORTAC before proceeding on course.

**TAKEOFF RUNWAY 31:** Climbing right turn to intercept PRB VORTAC R-010 to PRB VORTAC before proceeding on course.

**VCOA RUNWAYS 1, 13, 31:** Obtain ATC approval for VCOA when requesting IFR clearance. Climb in visual conditions to cross PRB VORTAC at or above 2200 before proceeding on course.

SW-3, 20 FEB 2025 to 20 MAR 2025

SW-3, 20 FEB 2025 to 20 MAR 2025