

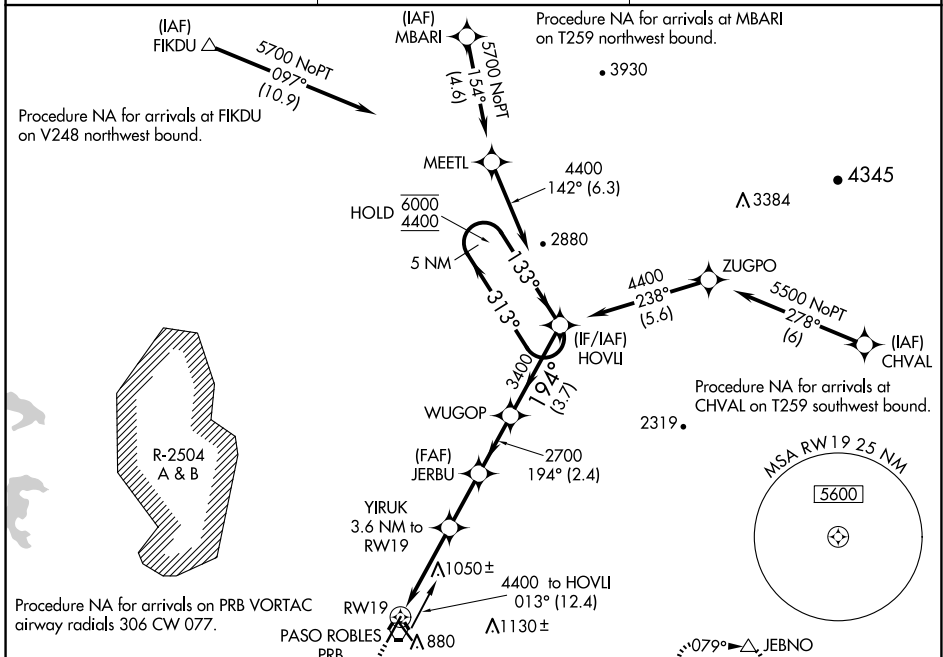
WAAS CH <b>93843</b> W19A	APP CRS <b>194°</b>	Rwy Idg TDZE Apt Elev	<b>6008</b> <b>812</b> <b>839</b>
---------------------------------	------------------------	-----------------------------	-----------------------------------------

# RNAV (GPS) RWY 19

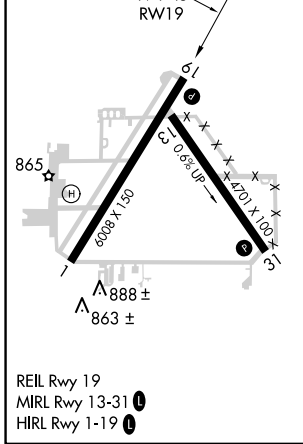
PASO ROBLES MUNI (P.R.B)

RNP APCH.	MISSED APPROACH: Climb to 1300 then climbing left turn to 4500 direct JEBNO and hold, continue climb-in-hold to 4500.
<p>▼ For uncompensated Baro-VNAV systems, LNAV/VNAV NA below -5°C or above 54°C.</p> <p>▲</p>	

ASOS <b>120.125</b>	OAKLAND CENTER <b>128.7 307.0</b>	UNICOM <b>123.0 (CTAF) 0</b>
------------------------	--------------------------------------	---------------------------------



ELEV 839	TDZE 812
----------	----------



1300	4500	JEBNO	HOVLI	5 NM Holding Pattern
*LNAV only		YIRUK 3.6 NM to RW19	JERBU 2700	WUGOP 3400
RW19		*1.4 NM to RW19	194°	313° → 6000 ← 133° 4400
1.4 NM		2.2 NM	2.4 NM	3.7 NM
CATEGORY	A	B	C	D
LPV DA		1062-3/4	250 (300-3/4)	
LNAV/VNAV DA		1109-7/8	297 (300-7/8)	
LNAV MDA	1300-1	488 (500-1)	1300-1 3/8	488 (500-1 3/8)
CIRCLING	1300-1 461 (500-1)	1380-1 541 (600-1)	1440-1 3/4 601 (700-1 3/4)	1700-2 3/4 861 (900-2 3/4)

SW-3, 20 FEB 2025 to 20 MAR 2025

SW-3, 20 FEB 2025 to 20 MAR 2025