

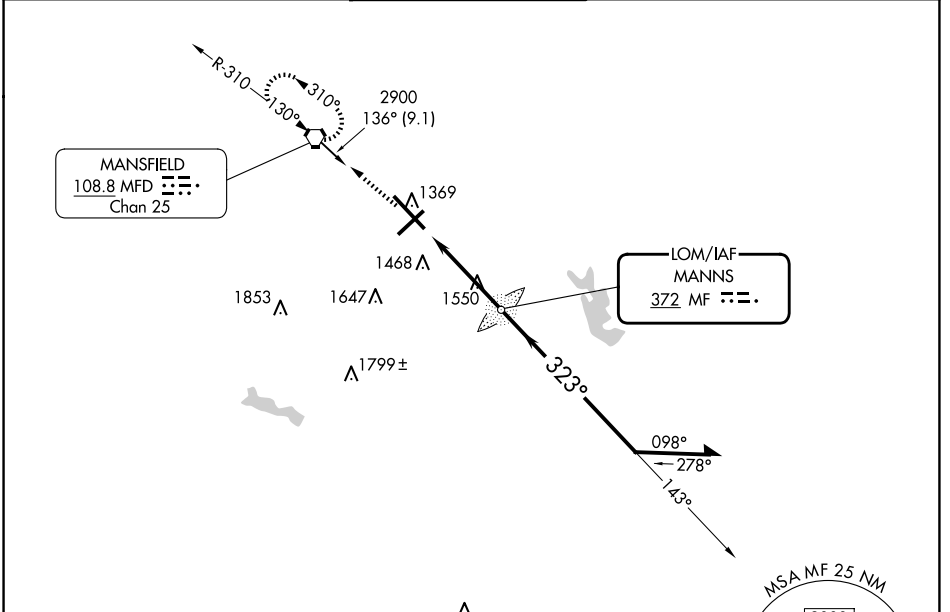
LOM MF <b>372</b>	APP CRS <b>323°</b>	Rwy Idg TDZE Apt Elev	<b>9001</b> <b>1293</b> <b>1297</b>
----------------------	------------------------	-----------------------------	---

# NDB RWY 32

MANSFIELD LAHM RGNL (MFD)

RADAR required for procedure entry.		MALSR 	MISSED APPROACH: Climb to 2900 direct MFD VORTAC and hold.
 For inoperative ALS increase Cats A/B visibility to RVR 5500 and Cats C/D visibility to 1 3/4 SM.			

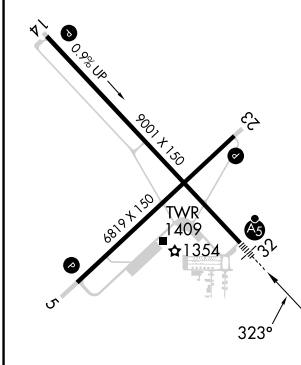
ATIS <b>125.3</b>	CLEVELAND APP CON ★ <b>128.35 360.65</b>	MANSFIELD TOWER ★ <b>119.8 (CTAF) 291.775</b>	GND CON <b>121.8 291.775</b>	UNICOM <b>122.95</b>
----------------------	---	--	---------------------------------	-------------------------



EC-2, 20 FEB 2025 to 20 MAR 2025

EC-2, 20 FEB 2025 to 20 MAR 2025

ELEV 1297	<b>D</b>	TDZE 1293
-----------	----------	-----------



HIRL Rwys 5-23 and 14-32  
REIL Rwys 5 and 23

FAF to MAP 4 NM

Knots	60	90	120	150	180
Min:Sec	4:00	2:40	2:00	1:36	1:20

