

WAAS CH <b>58201</b> <b>W17A</b>	APP CRS <b>176°</b>	Rwy Idg TDZE Apt Elev	<b>6201</b> <b>694</b> <b>717</b>
--	------------------------	-----------------------------	---

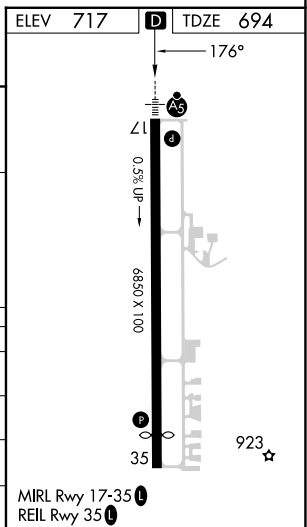
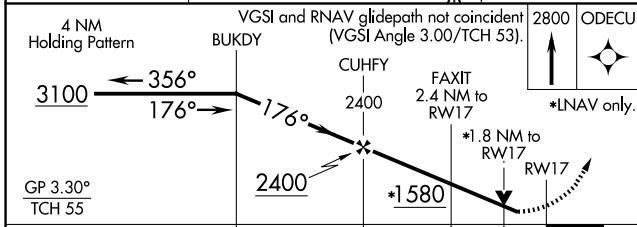
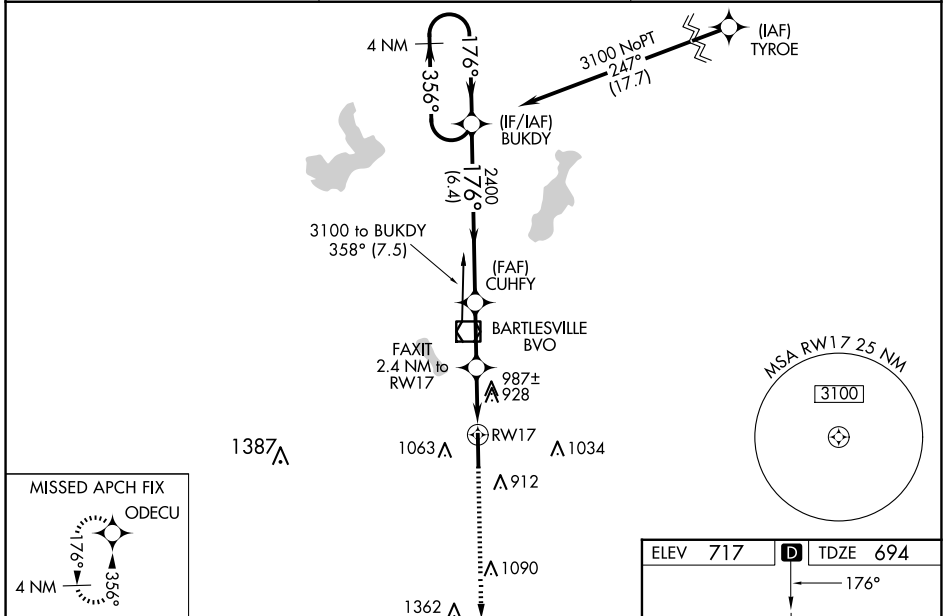
# RNAV (GPS) RWY 17

BARTLESVILLE MUNI (BVO)

**⚠** For uncompensated Baro-VNAV systems, LNAV/VNAV NA below -18°C (0°F) or above 54°C (130°F). DME/DME RNP-0.3 NA. When local altimeter setting not received, use Tulsa Intl altimeter setting and increase all DA 85 feet and all MDA 100 feet, increase LPV all Cats, LNAV/VNAV all Cats, LNAV and Circling Cat C visibility ¼ mile. Inop table does not apply to LPV all Cats. For inop MALS R, increase LNAV Cat A/B visibility to 1 mile. For inop MALS R when use Tulsa Intl altimeter setting, increase LNAV/VNAV all Cats visibility to 2½ mile, and LNAV Cat A/B visibility to 1 mile. Circling NA east of Rwy 17-35. Baro-VNAV and VDP NA when using Tulsa Intl altimeter setting. Helicopter visibility reduction below ¾ SM NA.

**MALS R**  
**AS**  
**MISSED APPROACH:**  
Climb to 2800 direct ODECU and hold.

ASOS <b>132.675</b>	KANSAS CITY CENTER <b>128.6 282.325</b>	CTAF <b>122.825</b>
------------------------	--	------------------------



CATEGORY	A	B	C	D
LPV DA	906-¾	212 (200-¾)	944-¾ 250 (300-¾)	NA
LNAV/VNAV DA	1317-1½		623 (700-1½)	NA
LNAV MDA	1240-¾	546 (600-¾)	1240-1⅛ 546 (600-1⅛)	NA
<b>C</b> CIRCLING	1380-1	663 (700-1)	1400-2 683 (700-2)	NA

SC-1, 20 FEB 2025 to 20 MAR 2025

SC-1, 20 FEB 2025 to 20 MAR 2025