

WAAS CH 61305 W35A	APP CRS 356°	Rwy Idg 6201 TDZE 712 Apt Elev 717
--	------------------------	---

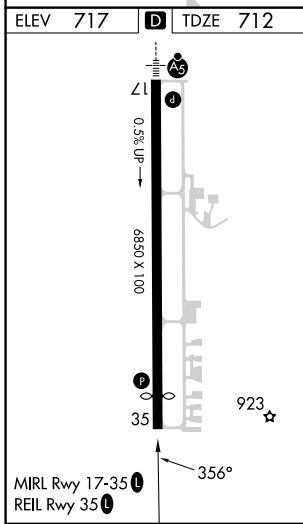
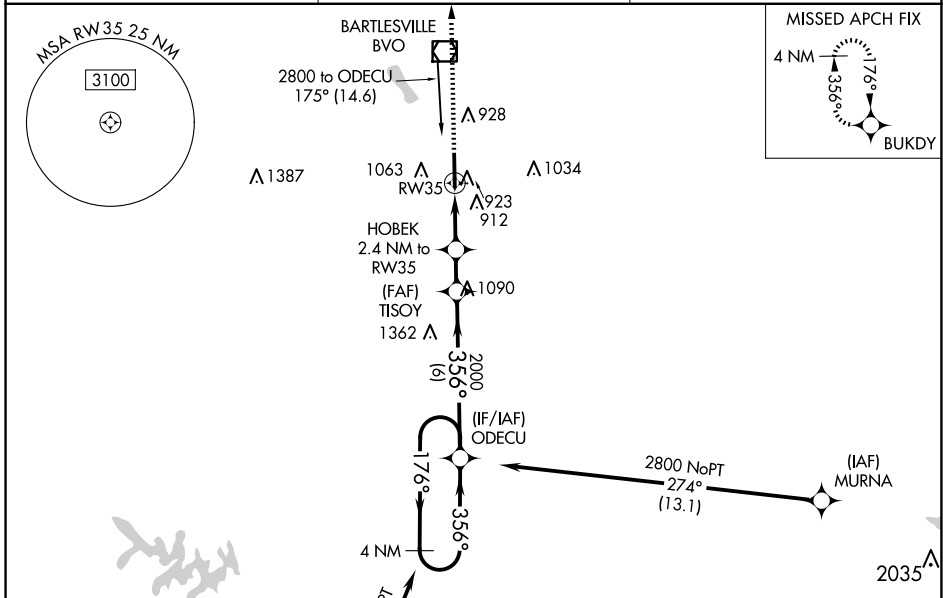
RNAV (GPS) RWY 35

BARTLESVILLE MUNI (BVO)

⚠ For uncompensated Baro-VNAV systems, LNAV/VNAV NA below -18°C (0°F) or above 54°C (130°F).
⚠ DME/DME RNP-0.3 NA. When local altimeter setting not received, use Tulsa Intl altimeter setting and increase all DA 85 feet and all MDA 100 feet, increase LPV all Cats visibility ¼ mile, LNAV/VNAV all Cats visibility ⅜ mile, LNAV and Circling Cat C visibility ¼ mile. Circling NA east of Rwy 17-35. Baro-VNAV and VDP NA when using Tulsa Intl altimeter setting. Helicopter visibility reduction below ¾ SM NA.

MISSED APPROACH:
Climb to 3100 direct BUKDY and hold.

ASOS 132.675	KANSAS CITY CENTER 128.6 282.325	CTAF 122.825
------------------------	--	------------------------



3100	BUKDY	HOBEEK 2.4 NM to RW35	TISOY 2000	ODECU	4 NM Holding Pattern
*LNAV only.		*1.3 NM to RW35			
1520*		1520*	2000		GP 3.00° TCH 45
1.3 NM	1.1 NM	1.5 NM	6 NM		
CATEGORY	A	B	C	D	
LPV DA		968-7/8	256 (300-7/8)		NA
LNAV/VNAV DA		1161-1 1/2	449 (500-1 1/2)		NA
LNAV MDA	1180-1	468 (500-1)	1180-1 3/8 468 (500-1 3/8)		NA
CIRCLING	1380-1	663 (700-1)	1400-2 683 (700-2)		NA

SC-1, 20 FEB 2025 to 20 MAR 2025

SC-1, 20 FEB 2025 to 20 MAR 2025